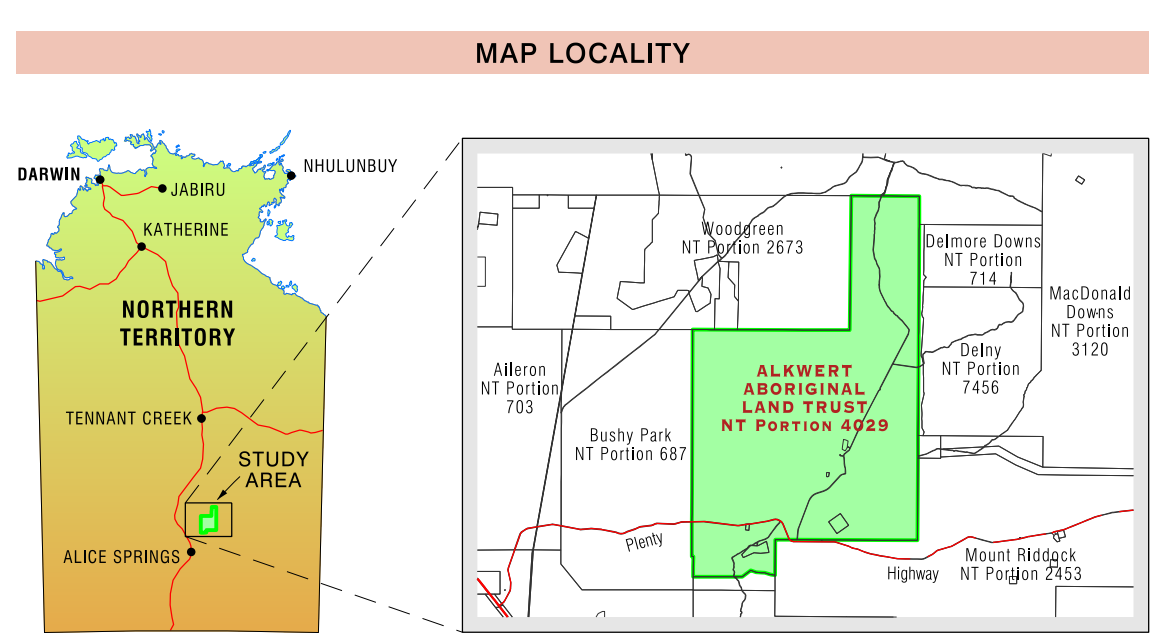
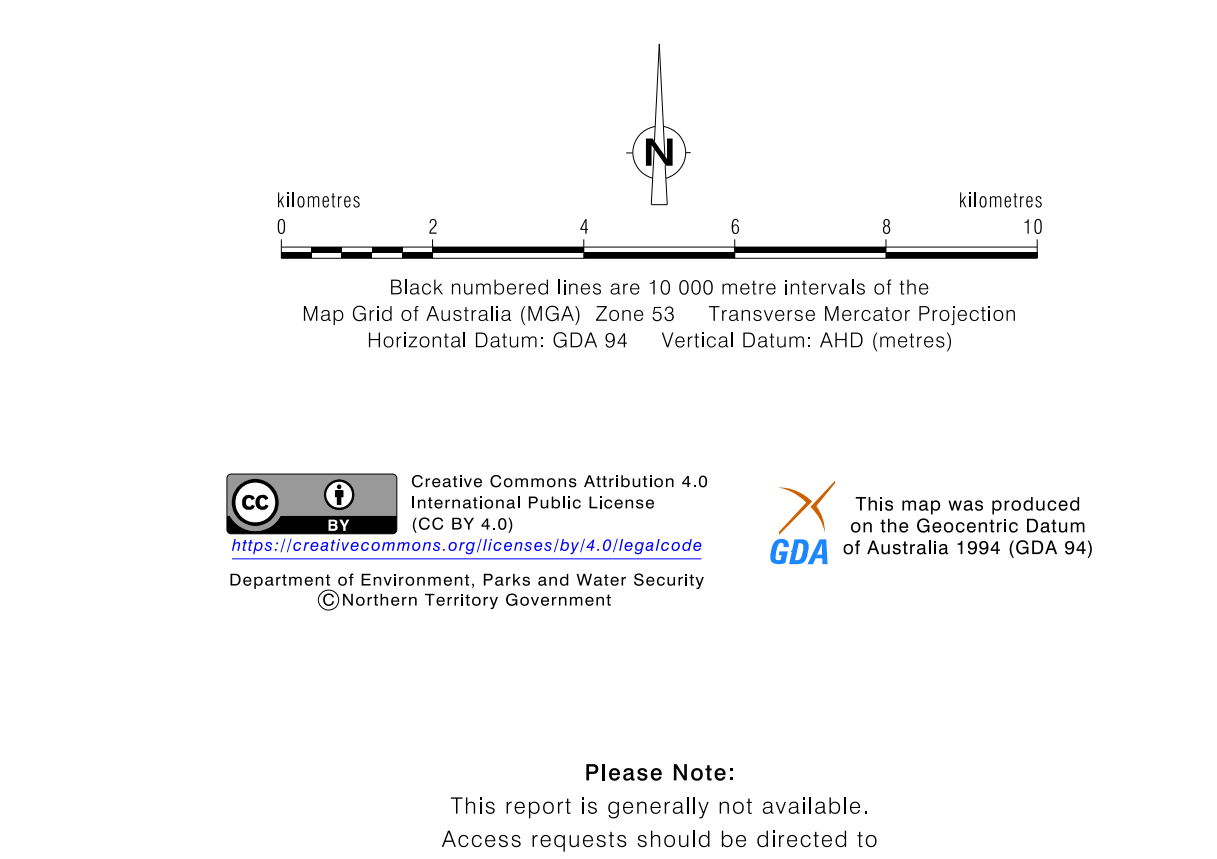


BIBLIOGRAPHIC REFERENCES

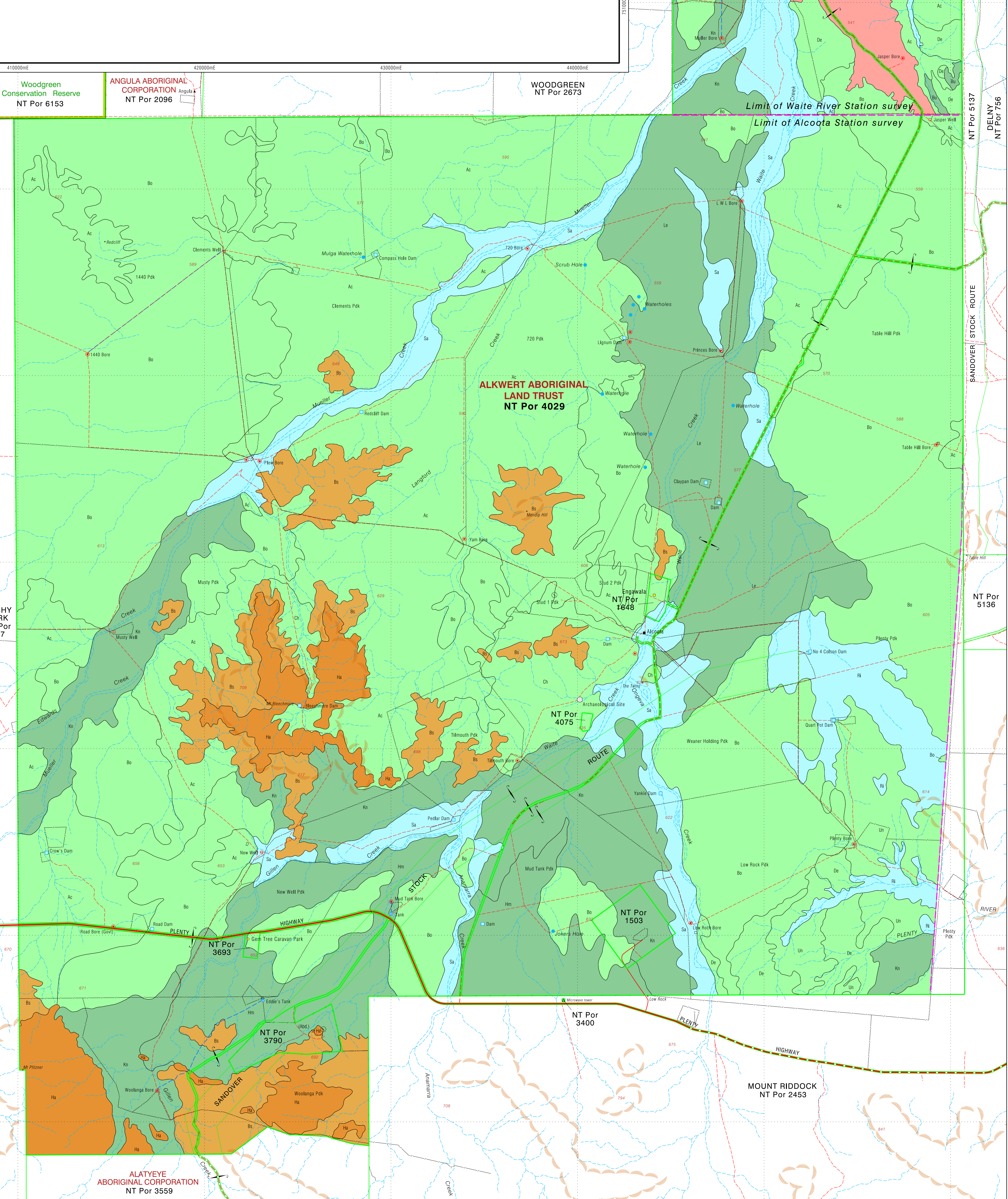
Bastin, G. (1980) RANGELAND CONDITION ASSESSMENT REPORT: ALCOOTA STATION. Department of Primary Production, Alice Springs NT.

Russell, G.; McGlasson, M. (1982) RANGELAND CONDITION ASSESSMENT REPORT: WAITE STATION. Department of Primary Production, Alice Springs NT.



GENERAL FEATURES

Land unit boundary	Water Bore	Yam Bore
Limit of mapping	Water Well	Misty Well
Property boundary	Dam	Redmill Dam
Park/Reserve	Tank	DPI Tank
Highway: sealed	Drainage	Mulga Pit
Highway: unsealed	Lagoon / Waterhole	Jokers Hole
Minor road: sealed	Tower	Microwave Tower
Minor road: unsealed	Landing ground	Relief Feature
Local road: track	Water pipeline	Spot height
Fence	Major Community Family Outstation	Relief ridge
Pastoral homestead	Engawala	Roadhouse
	Arteker	
	Alcoota HS	



LAND SYSTEM DESCRIPTIONS of Former ALCOOTA STATION

MOUNTAINS

Harts (Hs) Mountainous areas. Mainly bare rock with small pockets of shallow stony soils. Mainly bare rock with small areas of sparse shrubs and low trees over scattered grasses and forbs.

HILLS

Bond Springs (Bs) Rocky hill, lower foothill slopes and small watercourses fringing mountain areas in the south and eastern parts of Alcoota. Shallow sandy loams and shallow gritty sandy soils. Scattered Witchetty bush and Mulga over Woollybutt grass, Kerosene grass and occasional perennial grasses.

PLAINS

Alcoota (Ac) Gently undulating plains. Mainly red sandy clay loams with surface gravels in some areas. Also areas with sandy loams and stony clay loams. Open woodland with Whitebark, Bloodwood, Mulga and Witchetty bush over annual and scattered perennial grasses.

Boen (Bo) Gently undulating plains. Red sandy clay loams with dark ironstone surface gravels. Mulga over either annual (Woollybutt and Mulga grasses) or hard perennial grasses (Woollybutt, Wire and Kerosene grasses). Witchetty bush and perennial grasses in some areas.

Chisholm (Ch) Dissected plains. Shallow sandy loams with rock outcrop and areas with red sandy clay loams. Witchetty bush with Bloodwood, Whitebark, Corkwood, Mulga and Bromebush over Woollybutt grass pasture.

Delny (De) Broken or undulating country of plains, low hills, and slopes. Highly erodible sandy clay loams, or shallow sand loams. Cottonbush and perennial grasses, Curly Windmill, Umbrella, and Neverfall grasses. Sparse Mulga and Witchetty Bush or Glycyde woodlands. Creeks or drainage depressions with River Red gums, Ironwood or thick Glycyde.

Undipna (Ud) Gilted clay plains. Heavy cracking clays and medium textured clay soils. Gilted clay plains with Mitchell grass and small amounts of Oat and Native Millet grasses. Riverbeds and batters grasses present after summer rains. Plains adjacent to Mitchell grass plains have Neverfall with minor Oat grass and forbs.

ALLUVIAL PLAINS

Hamilton (Hn) Slightly sloping and gently undulating plains. Small areas with floodouts or alluvial fan areas, alluvial basins and narrow inland gullies. Sandy loams and sandy clay loams with a calcareous base. Open woodland of Mulga, Whitebark, Ironwood, Bloodwood and oak. Supplejack over Woollybutt, Umbrella and Curly Windmill grasses and other perennials.

Kanandra (Kn) Sandy plains adjacent to ranges and creeks. Red sandy clay loams and Red clayey sands. Sparse to dense cover of Mulga with some Witchetty bush over Kerosene grass, Woollybutt, annual grasses (Woollybutt, Bunched Kerosene) and forbs. Minor Ironwood, River Red Gums and rank grasses along creeks and watercourses.

Leahy (Le) Sandy alluvial plains. Loose-surfaced red clay sand. Mainly dense Mulga and Witchetty Bush over annual grasses such as Woollybutt grasses and Bunched Kerosene grass and forbs.

DRAINAGE SYSTEMS

Ringwood (Ri) Broad flat drainage depressions, frequent channels and gullies. Red sandy clay loams on a limestone base. Dense Glycyde over most of the area with little understorey. More open areas have Cottonbush and Curly Windmill, Kangaroo, Desert Blue grass and Silky Brownwort grasses and forbs.

Sandover (Sa) Sandy river plains. Sandy loams, sandy clay loams and coarse textured sands. Woodlands of mainly Ironwood, with Mulga, Witchetty Bush, Corkwood and Supplejack over Woollybutt grass with Curly Windmill and Umbrella grasses.

LAND SYSTEM DESCRIPTIONS of Former WAITE STATION

PLATEAUX

Table Hill (Ta) Slightly undulating and dissected plateaux. Shallow red-brown sandy clay loams on a limestone base. Dense Glycyde over most of the area with Mulga and some Bloodwood, Whitebark, Blue-leaf cassia and Bromebush over Oat and Limestone oak grasses, Skids and other forbs.

MOUNTAINS

Hann (Hn) Massive lightly dissected ridges with relief up to 100 m and associated slopes and fans. Rock outcrop, skeletal coarse-textured soils, shallow stony soils and low bushy areas. Sparse stunted Mulga, Glycyde or Witchetty bush over low shrubs and Hard spinnex on ridges. Sparse stunted Mulga or low shrubs (Green-leaf cassia and Turkey bush). Hard spinnex and perennial grasses (Woollybutt) on lower hills and stony slopes. Sparse stunted Mulga, Bloodwood and long-leaved corkwood over low shrubs. Hard spinnex and Woollybutt on fans.

HILLS

Bond Springs (Bs) Bold outcrops with steep or erosional slopes and low hills. Rock outcrop, skeletal coarse-textured soils and shallow stony soils. Witchetty bush, Mulga, Bromebush and low Eremophila over Woollybutt and Mulga grasses on steep slopes. Witchetty bush and minor Bromebush over Woollybutt and some Mulga and Kerosene grass on erosional slopes and low hills.

PLAINS

Alcoota (Ac) Gently undulating erosional plains and slopes. Red brown sandy clay loams with mainly quartz surface gravel. Open stands of Mulga, Bloodwood, Whitebark and Witchetty bush with low shrubs (mainly Green-leaf cassia), Woollybutt and some Mulga grass with scattered Umbrella and Curly windmill grass.

Boen (Bo) Gently undulating erosional plains. Deep red earths, either sandy clay loams or red loamy sands and sandy loams with some laterite gravel, Mulga Annual areas - Mulga and Witchetty bush over predominantly annual grasses (Woollybutt and Mulga grasses), occasional perennial grasses (Cotton grass, Umbrella grass and Native panic). Mulga Perennial areas - Mulga over hard and generally unpalatable perennial grasses (Woollybutt, Kerosene, Mulga Mitchell and Wire grasses).

Delny (De) Broken or undulating country (dissected plains) with some stony ridges. Red to brown sandy clay loams with widespread laterite: gravel on ridges. Dissected plains have Glycyde and occasionally Mulga. In places, Curly windmill grass and Woollybutt and Umbrella grasses predominate in the inter-gully areas. Small open areas of Cottonbush and perennial grasses (Neverfall, Mitchell grass), Glycyde, Turkey bush and Green-leaf cassia over annual grasses (mainly Woollybutt) and Curly windmill grass on ridges.

ALLUVIAL PLAINS

Bushy Park (Bu) Alluvial plains. Red earths, mainly sandy clay loams. Mulga and occasionally Glycyde or Witchetty bush over annual (Woollybutt, Mulga grass) and some perennial grasses (Cotton grass).

Kanandra (Kn) Alluvial plains, coarse-textured brown and red brown alluvial soils, mainly sandy loams and some sandy clay loams. Open woodland of Ironwood, Whitebark, Supplejack, Corkwood and Witchetty bush over Kerosene, Mulga and Oat grasses with Wanderie and occasional Woollybutt. Curly windmill near large trees. Some areas of dense scrub of Ironwood, Witchetty bush, Mulga, Bromebush and other shrubs over Mulga, Kerosene and minor perennial grasses. Curly windmill, Silky brownwort and Kangaroo grasses in small depressions.

Leahy (Le) Broad alluvial plains and very broad low dunes with rounded profiles. Red-brown sandy clay loams on alluvial plains, yellow brown loamy sands on low dunes. Alluvial plains have open stands of Glycyde, Mulga or Ironwood over annual grasses (Woollybutt and Mulga grass), perennials (Umbrella grass, Neverfall and some Silky brownwort) and minor forbs. Low broad dunes carry very sparse Woodcock and occasional Supplejack over Hard spinnex, Wanderie and Woollybutt.

SAND PLAINS

Singleton (Sg) Hummocky sandplain of low sandy rises. Mainly red loamy sands. Sparse Whitebark, Ghost gum and occasional Ironwood over Chocolate bush, Hard spinnex, Woollybutt and Kerosene grass.

DRAINAGE SYSTEMS

McGrath (Mj) Active floodplains. Medium-textured alluvial soils and red earths, mainly sandy clay loams. Mainly open grassland of Woollybutt and 8 day grasses, with occasional Glycyde or Mulga over Curly windmill grass.

Sandover (Sa) Outer active floodplains with hummocky surfaces. A range of soils mainly coarse-textured alluvial soils and red earths, mainly sandy clay loams. Mainly open grassland of Woollybutt and 8 day grasses, with occasional Glycyde or Mulga over Curly windmill grass.

Example of Land System Description

Map Unit	Landform Description	Soil Description
McGrath (Mj)	Active floodplains	Medium-textured alluvial soils and red earths, mainly sandy clay loams. Mainly open grassland of Woollybutt and 8 day grasses, with occasional Glycyde or Mulga over Curly windmill grass.
Land System	Vegetation Description	

Cartography by:
Ralf Koberstein - Geospatial Services
Department of Environment, Parks and Water Security
Northern Territory of Australia.

Map Reference: Map Alcoota-Waite-Stn Land-Res 100k_m53
Drawing Number: DEPSWS 2022 043
March 2022

General features data sources:
Cadastral, roads, place names: Department of Infrastructure, Planning and Logistics, Northern Territory of Australia.
Pastoral Infrastructure: Department of Environment, Parks and Water Security, Northern Territory of Australia.
Hydro features: Commonwealth of Australia (Bureau of Meteorology) 2014
Spot heights: Geoscience Australia, 2007. Geodata top 250K. Series 3.

Limitations of use
Land Resource Information has been derived from aerial photograph interpretation and field data collection describing landform, soil and vegetation. Mapping has been collected at a nominal scale of between 1:100 000 and 1:250 000. Entering this map beyond this scale will not provide further detail and is not recommended. Final mapping is presented at a scale of 1:100 000.

When assessing specific areas within the mapping it is recommended that a site inspection be undertaken to establish unmaped variations and to confirm the mapping accuracy on the ground.

For further information contact:
Department of Environment, Parks and Water Security
Director, Land Assessment, Rangelands Division
Ph. (08) 8999 4478 Email: rangelands@nt.gov.au
Level 3, Glycyde Centre, 25 Chung Wah Terrace,
Palmerston, Northern Territory of Australia.
Web: <https://depws.nt.gov.au>
Geospatial Information: <https://rmaps.nt.gov.au>

LAND RESOURCES of ALKWERT ABORIGINAL LAND TRUST
(previously Alcoota Station & Waite River Station)

NORTHERN TERRITORY GOVERNMENT