

Mapping the Future **NORTHERN TERRITORY GOVERNMENT**

Mapping the Future Project - Wadeye

DEVELOPMENT POTENTIAL of the WADEYE AREA

For further information contact:
 Department of Environment, Parks and Water Security
 Mapping the Future Project
<https://depws.nt.gov.au/DevelopmentOpportunities>

Bibliographic references:
 Cruckshank, S. (2021). *Mapping the Future Project - Wadeye. Development Potential of the Wadeye Area.* Technical Report 14/2021. Department of Environment, Parks and Water Security, Darwin, NT.

Scale: 0 0.5 1 1.5 2 2.5 km
 Black numbered lines are 2500 metre intervals of the Map Grid of Australia (MGA) Zone 52 Transverse Mercator Projection. Horizontal Datum: GDA 94

This map was produced on the Geospatial Data of Australia 1994 (GDA 94)

GENERAL FEATURES

Nangu study area	Hydro: coastline
Terrestrial	Hydro: coastal flat
Marine	Hydro: land subject to inundation
Major community	Hydro: swamp
Family outstation	Hydro: drainage (perennial)
Road: minor sealed	Hydro: drainage (non-perennial)
Road: minor unsealed	Provisional rail
Road: track	Spot height (m AHD)
Named relief	
Spot height (m AHD)	

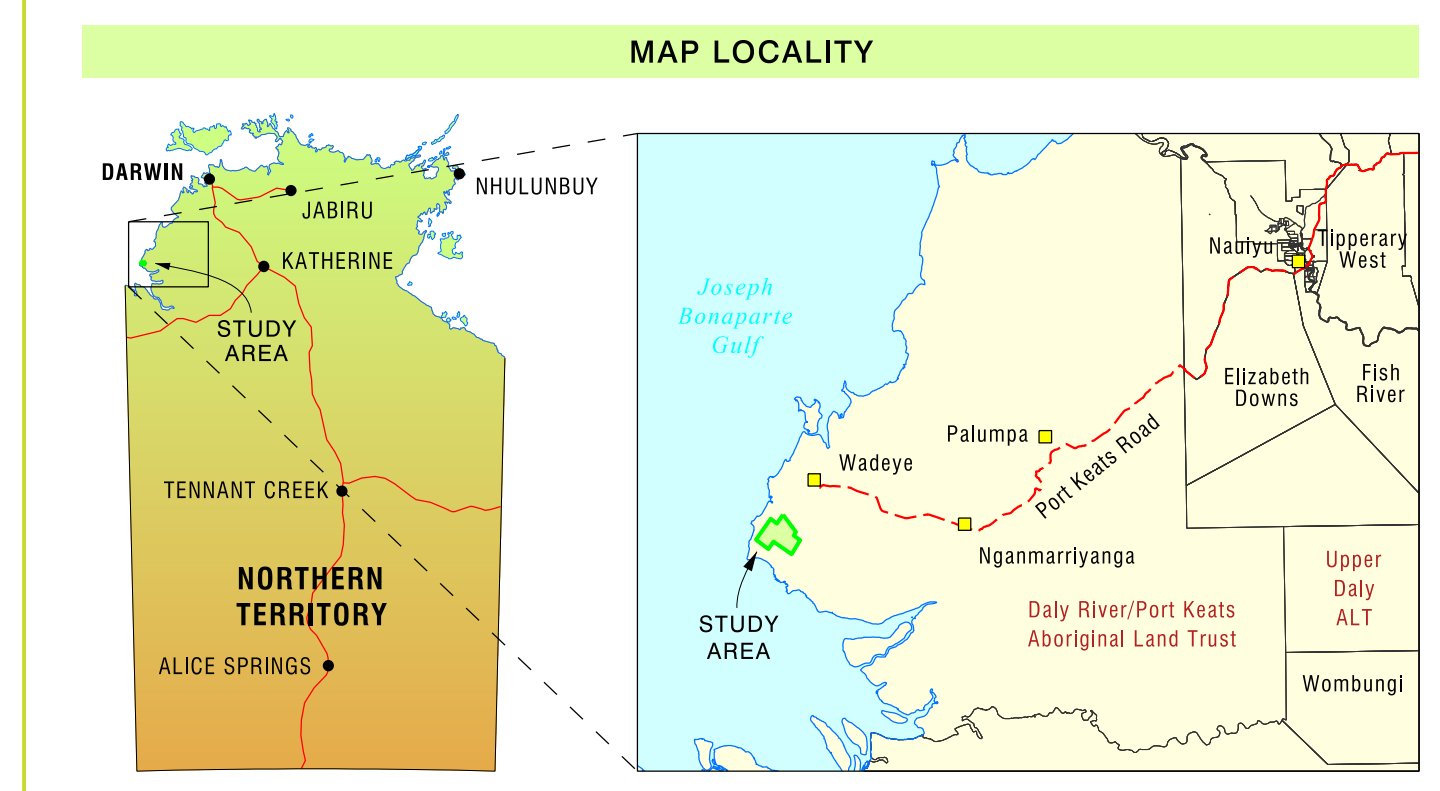
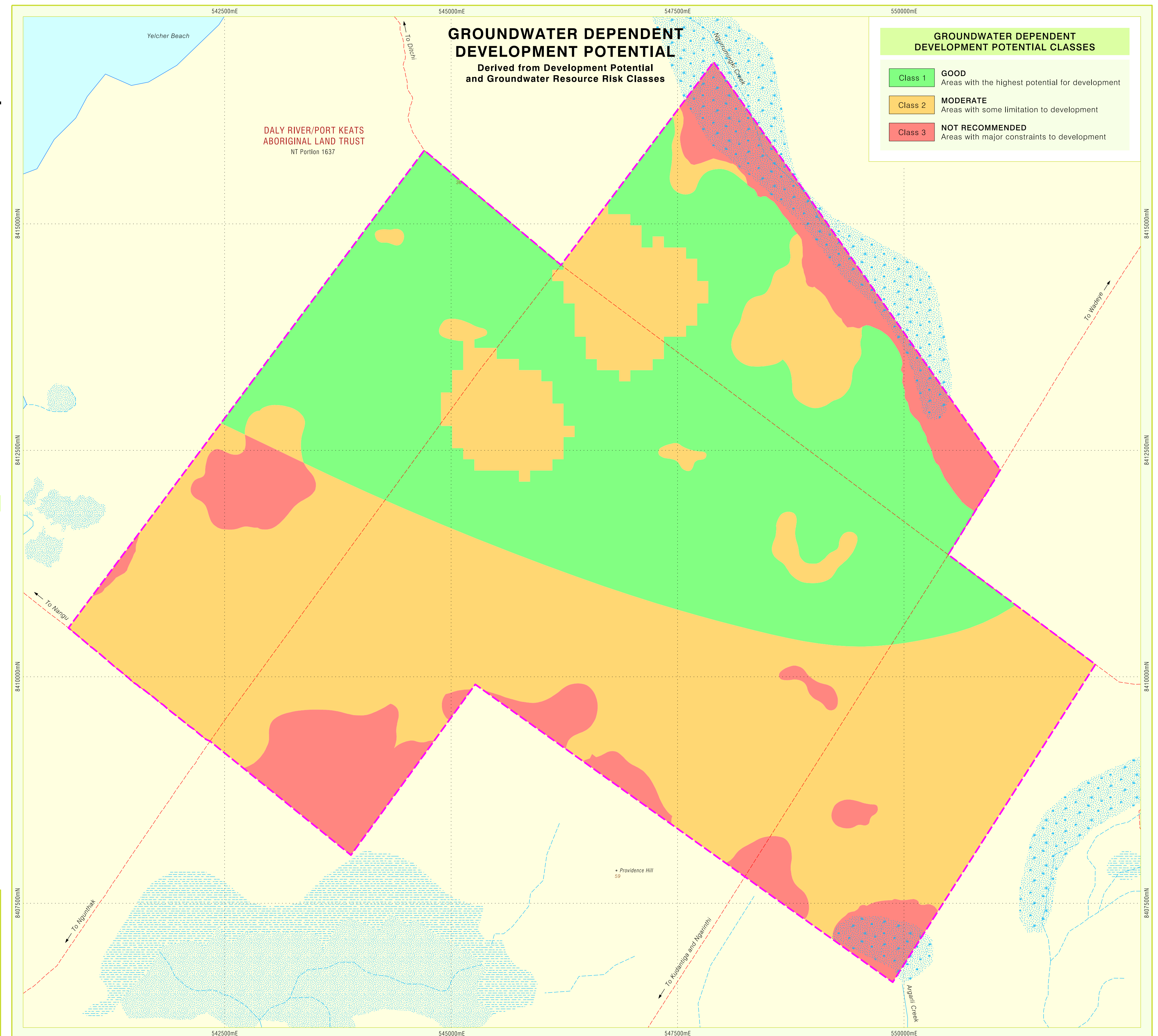
General features data sources:
 Department of Infrastructure, Planning and Logistics, Northern Territory Government.
 Hydro features:
 Australian Hydrological Geospatial Fabric (Geotack) National V2.1.1, Commonwealth of Australia (Bureau of Meteorology) 2014.
 Named relief, spot heights:
 Geodata topo 250K, S3, Commonwealth of Australia (Geoscience Australia) 2006.

Cartography by:
 Deborah Mullen
 Geospatial Services
 Department of Environment, Parks and Water Security
 Northern Territory Government.

Map Reference: Map_MTFWadeye_Development-Potential
 Drawing No.: DEPWS2021041
 May 2021

Important Notice:
 The Department of Environment, Parks and Water Security has made every reasonable effort to provide current and accurate information, but it does not make any guarantee regarding the accuracy, currency or completeness of the information.
 This information is intended as a guide only. It does not constitute professional advice and should not be relied upon for legal, government, investment or other decisions. You should obtain professional advice relevant to your specific circumstances and needs.

Creative Commons Attribution 4.0 International Public License
<https://creativecommons.org/licenses/by/4.0/>
 Department of Environment, Parks and Water Security
 Northern Territory Government



Technical References:
 Richardson, S., Irvine, E., Friend, R., Boon, P., Barber, S., and Bonville, B. (2011). *Australian groundwater-dependent ecosystems toolbox part 1: assessment framework.* Waterlines Report Series No. 69. National Water Commission, Canberra.

National Committee on Soil and Terrain (2009). *Australian Soil and Land Survey Field Handbook. Third Edition.* CSIRO Publishing, Melbourne, Victoria.

Executive Steering Committee for Australian Vegetation Information (ESCAVI) (2003). *Australian Vegetation Attribute Manual: National Vegetation Information System, Version 6.* Department of Environment and Heritage, Canberra.

Isbell, R. F. and National Committee on Soil and Terrain (2016). *The Australian Soil Classification. Second Edition.* CSIRO Publishing, Clayton South, Victoria.

Mapping the Future Project - Wadeye
 The project has identified land capability, water availability and biodiversity values to support land planning and inform development potential over the Wadeye area.
 Reports and maps can be viewed from the development opportunities webpage: <https://depws.nt.gov.au/DevelopmentOpportunities>

Cruckshank, S. (2021). *Mapping the Future Project - Wadeye. Development Potential of the Wadeye Area.* Technical Report 14/2021. Department of Environment, Parks and Water Security, Darwin, NT.

Stokell, D., Cuff, N., Leiper, I., Lewis, D., and Coole, I. (2021). *Mapping the Future Project - Wadeye. Biodiversity Assessment of the Wadeye Area.* Technical Report 15/2021. Department of Environment, Parks and Water Security, Darwin, NT.

Zaar, U. and Bruwer, D. (2020). *Wadeye Region Water Resources Investigation.* Technical Report 10/2017. Department of Environment and Natural Resources, Palmerston, NT.

Burgess, J., McGrath, N., Andrews, K., and Wright, A. (2017). *Agricultural Land Suitability Series, Report 6. Soil and Land Suitability Assessment for Irrigated Agriculture in the Mungo Area, Daly River/Port Keats Aboriginal Land Trust.* Technical Report 16/2017D. Department of Environment and Natural Resources, Darwin, NT.

