

NT Por 1637
DALY RIVER/PORT KEATS
ABORIGINAL LAND TRUST

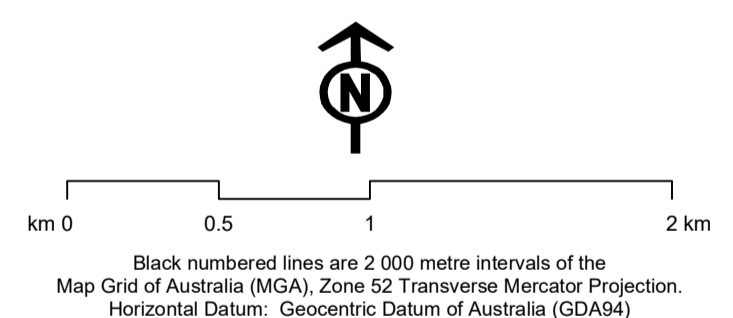
LAND CAPABILITY ASSESSMENT CRITERIA
(used to derive the General Land Capability Class)

- Acid sulfate**
 - Class 1. Not present
 - Class 4. Present
- Flooding**
 - Class 1. Never
 - Class 2. Extremely rare *
 - Class 3. Rare *
 - Class 4. Regular to permanent
- Salinity**
 - Class 1. Non-saline
 - Class 2. Slightly saline
 - Class 3. Moderately saline
 - Class 4. Highly to extremely saline *
- Slope ^**
 - Class 1. Level (0-1%)
 - Class 2. Gentle (1-2%)
 - Class 3. Substantial (2-3%) *
 - Class 4. Excessive (>3%) *
- Soil Depth**
 - Class 1. Deep to very deep (>1m)
 - Class 2. Moderately deep (0.5-1m)
 - Class 3. Shallow (0.25-0.5m) *
 - Class 4. Very shallow (<0.25m) *
- Soil Drainage**
 - Class 1. Well to rapid
 - Class 2. Moderately well *
 - Class 3. Imperfect
 - Class 4. Poor to very poor
- Surface Rock**
 - Class 1. None (0%)
 - Class 2. Negligible (0-2%)
 - Class 3. Moderate (2-10%) *
 - Class 4. Abundant (>10%) *

Notes:
* Class is not present in this survey
Criteria Gilgai Microrelief, Sodicity & Wind Erosion not assessed.
^ Slope is also described as Water Erosion Risk in the report.

LAND RESOURCES

- Survey soil site
- Land units
- Soil Order
 - Chromosols
 - Hydrosols
 - Kandosols
 - Tenosols
- Vegetation Structure
 - Mid open forest
 - Mid woodland
 - Low woodland
 - Mid open woodland
 - Mid open woodland over Low open woodland
- Landform Class
 - Low Rises
 - 7a1
 - Plains
 - 8a1; 8a2
 - 8b1; 8b2; 8b3; 8b4
 - 8c1; 8c2; 8c3; 8c4; 8c5; 8c6
 - 8d2; 8d1
 - Swamps
 - 11a1



GENERAL LAND CAPABILITY CLASS

- Class 1** Land with negligible limitations that is highly productive and requires only simple management practices. (ASS not present (oxidisable sulfur <0.02%) within 1.5 m of surface; flood free; ECe <2 d5/m; 0-1% slope; >1.0 m soil depth; rapid to well-drained soil; no surface rock)
- Class 2** Land with minor to moderate limitations that is productive but requires more than the simple management practices of Class 1. (ASS present (oxidisable sulfur >0.02%, <50 tonnes to be disturbed) within 1.5 m of surface; and/or extremely rare flooding; and/or ECe 2-4 d5/m; and/or 1-2% slope; and/or soil depth 0.5-1.0 m; and/or moderately drained soil; and/or 0-2% surface rock)
- Class 3** Land with severe limitations that is only marginally productive and requires major management practices. (ASS present (oxidisable sulfur >0.02%, <100 tonnes to be disturbed) within 1.5 m of surface, and/or rare flooding; and/or ECe 4-8 d5/m; and/or 2-3% slope; and/or 0.25-0.5 m soil depth; and/or imperfectly drained soil; and/or 2-10% surface rock)
- Class 4** Land with extreme limitations that is not suitable for agriculture. Limitations cannot be overcome with practical or cost effective management practices. (ASS present (oxidisable sulfur >0.02%, >100 tonnes to be disturbed) within 1.5 m of surface; and/or regular to permanent flooding; and/or ECe >8 d5/m; and/or >3% slope; and/or >0.25 m soil depth; and/or poor to very poorly drained soil; and/or >10% surface rock)

LAND SUITABILITY CLASS FOR IRRIGATED AGRICULTURE

- Class 1** Land with negligible limitations Highly productive land requiring only simple management practices to maintain sustainable production.
- Class 2** Suitable land minor limitations Land with minor limitations that either constrain production or require more than the simple management practices of Class 1 land to maintain sustainable production.
- Class 3** Suitable land moderate limitations Land with moderate limitations that further constrain production or require more than the management practices of Class 2 land to maintain sustainable production.
- Class 4** Unsuitable land with severe limitations Land with moderate limitations that further constrain production or require more than the management practices of Class 2 land to maintain sustainable production.
- Class 5** Unsuitable land with extreme limitations Land with extreme limitations that preclude any possibility of successful or sustained use, either now or in the future.

IMPORTANT NOTICE

The Department of Environment, Parks and Water Security has made every reasonable effort to provide current and accurate information, but it does not make any guarantees regarding the accuracy, currency or completeness of the information.

This information is intended as a guide only. It does not constitute professional advice and should not be relied upon for legal, development, investment or other decisions. You should obtain professional advice relevant to your specific circumstances and needs.

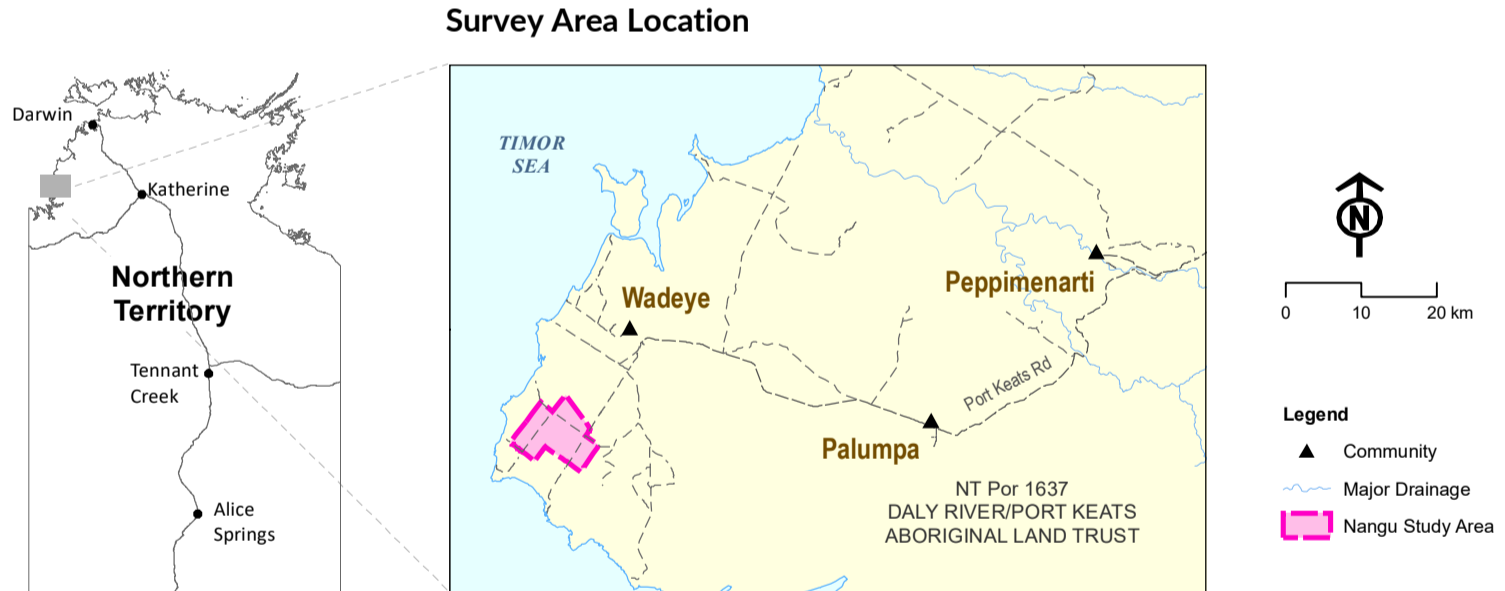
This map does not indicate, imply or ascertain the likelihood of groundwater availability or the granting of appropriate water extraction licensing needed to satisfy potential irrigation requirements.

Creative Commons Attribution 4.0 International Public License (CC BY 4.0)
<https://creativecommons.org/licenses/by/4.0/legalcode>

Department of Environment, Parks and Water Security
© Northern Territory Government

POTENTIAL IRRIGATED AGRICULTURE CROPS

Irrigated Crop Group	Group No.	Potential Crops
Perennial crops	1A	Monsoonal tropical tree crops (0.5 m root zone) - Mango, Coconut, Dragonfruit, Kakadu Plum, Bamboo
	1B	Monsoonal tropical tree crops (1.0 m root zone) - Cashew, Jackfruit, Tamarind, Morinda citrifolia
	2	Rainforest tropical and sub-tropical tree crops - Rambutan, Durian, Longan, Carambola, Sourpaw
Row crops	3	Tropical citrus - Lime, Lemon, Mandarin, Pomegranate, Grapefruit
	4	Fruit row crops - Banana, Papaya, Pineapple, Passionfruit
	5	Cucurbits - Watermelon, Honeydew Melon, Rockmelon, Pumpkin, Cucumber, Asian Melons, Zucchini, Squash
	6	Fruiting vegetable crops - Solanaceae (Capsicum, Chilli, Eggplant, Tomato), Okra, Snake Bean, Drumstick Tree
	7	Leafy vegetables and herbs - Kangkong, Amaranth, Lettuce, Chinese Cabbage, Bok Choy, Pak Choy, Choy Sum, Spring Onions, Basil, Coriander, Dill, Mint, Spearmint, Chives, Oregano, Lemon Grass
Irrigated flower crops - Cucurbita, Heliconia, Etilingera, Globba, Alpina, Zingibar	8	
Root crops	9	Sweet Potato, Shallots, Ginger, Turmeric, Galangal, Yam Bean, Taro, Cassava
Forestry	10	Sandalwood
Field crops	11	Cotton, Grains (Sorghum, Maize, Sweet Corn, Rice), Pulses (Mung Bean, Soybean)
	12	Peanut
Hay and forage	13	Sub-tropical grass hay/forage (Rhodes grass, Panics, Strickland, Premier Digi, Solander/Splenda Setaria, Forage Sorghum)
Rain-fed Crop Group	Group No.	Potential Crops
Forestry	14	Mahogany, Eucalyptus spp., Acacia spp.
Hay and forage	15	Sub-tropical grass hay/forage (Jarra, Strickland, Tully, Cavalcade, Forage Sorghum)



Mapping the Future Project - Wadeye

Soil and Land Suitability Assessment for Irrigated Agriculture in the Nangu Area, Daly River / Port Keats Aboriginal Land Trust, Northern Territory

Bibliographic Reference

Burgess J., McGrath N., Andrews K. and Wright A. (2017) Agricultural Land Suitability Series, Report 8: Soil and Land Suitability Assessment for Irrigated Agriculture in the Nangu Area, Daly River / Port Keats Aboriginal Land Trust Technical Report 16/2017D. Department of Environment and Natural Resources, Darwin, NT.

Technical References

National Committee on Soil and Terrain (2009). Australian Soil and Land Survey Field Handbook, Third Edition. CSIRO Publishing, Melbourne, Victoria.

Ibbett, R. F. and National Committee on Soil and Terrain (2016) The Australian Soil Classification, Second Edition. CSIRO Publishing, Clayton South, Victoria.

Executive Steering Committee for Australian Vegetation Information (ESCAVI) (2003). Australian Vegetation Attribute Manual: National Vegetation Information System, Version 6. Department of Environment and Heritage, Canberra.

About land resource information

Land resource spatial data description [Metadata record](#)

The metadata record contains web links to download reports, maps and spatial data.

View soil site data and descriptions in the DEPWS web mapping application rmaps.nt.gov.au

Data Source

Land Resources: Rangelands Division, Department of Environment, Parks and Water Security
Cadastre, Roads, Placenames: Department of Infrastructure, Planning and Logistics
Drainage: GeoFabric, Commonwealth of Australia (Bureau of Meteorology) 2020

About this PDF map

This is an interactive PDF map best viewed on screen using Adobe reader. If using Adobe Reader DC protected view, enable all features.

- Open folders in the left panel to view the map layers
- Show or hide map layers
- Turn off colour filled layers above, as they will mask the layer below
- Titles will automatically turn on to match the layers
- Only display one layer at a time, so the titles do not merge
- Page size is 97 x 60cm. To print, use size B1 with no scaling

Land Unit Descriptions

- Click on the Attachment icon in the left panel.
- Land unit descriptions are attached to this PDF in an Excel spreadsheet.

For further information, please contact:
Department of Environment, Parks and Water Security (DEPWS)
Rangelands Division

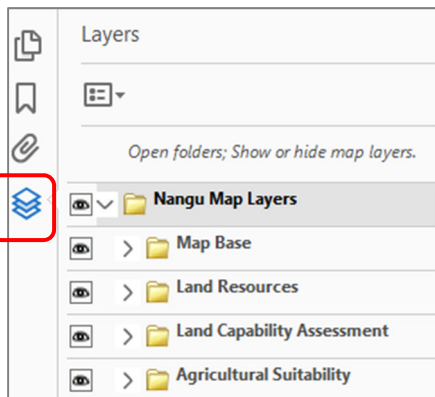
Level 3, Goyder Centre, 25 Chung Wah Terrace, Palmerston Northern Territory of Australia.
Phone: (08) 8995-4478
Email: rangelands@nt.gov.au
Web: land-soil-vegetation-information

Map production: C. Green, May 2021. Drawing Ref: DEPWS2021096

Map layers are not visible via web view. Download the PDF map to your computer.

Click here to view the map

About viewing this interactive PDF map using Adobe Reader



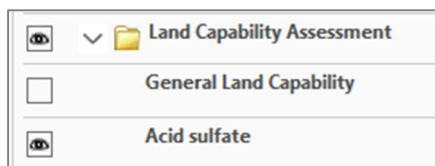
This interactive PDF map contains layers.

Using Adobe Reader, open the left side panel.

Click the layers icon to reveal the map layers.

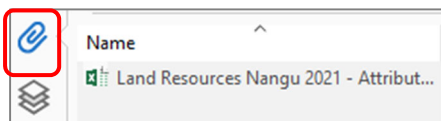
Open each folder to see the individual map layers.

Click the eye icon to show or hide each map layer.



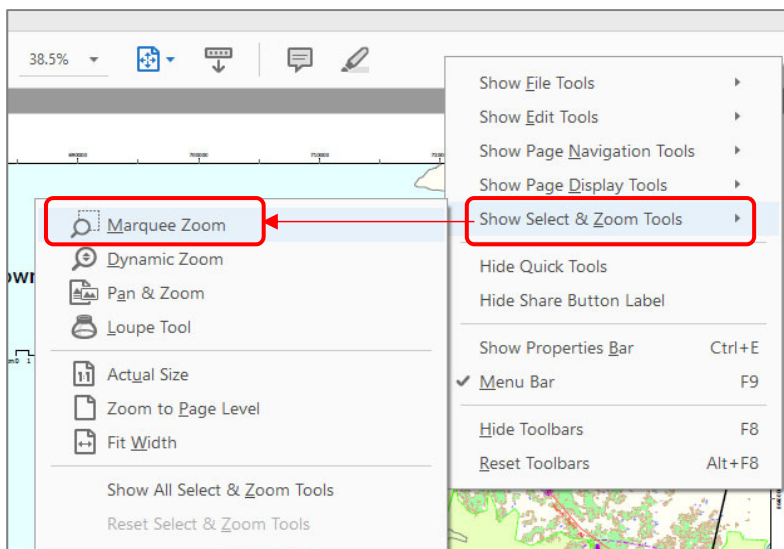
Turn off colour filled layers above, as they will mask the layer below.

Titles will automatically display for each layer. The titles will merge when more than one layer is displayed.



View attachments

Click on the attachment icon in the left panel. A summary of the land resource attributes is provided (Microsoft Excel format).



How to add new Adobe tools

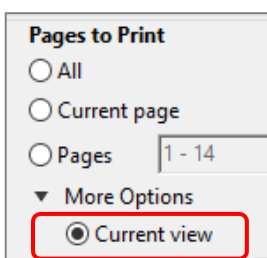
Right mouse click on the grey menu toolbar to see Adobe PDF viewing tools.

Tick the tool to add to the menu bar.

The **Marquee Zoom tool** is useful to view a small area on the map. eg zoom to the legend area.

Show Select & Zoom Tools > Marquee Zoom

To use: Click on the map and draw a rectangle to zoom to that location.



Printing

This map is best viewed on the computer screen.

The map is 97 x 60 cm. To print to a large format plotter, use page size B1 with no scaling. Only turn on one layer so the titles do not merge.

A smaller area on the map page may be printed using the *Current View* printing option.