

GENERAL FEATURES

- Property boundary
- Park or reserve
- Land unit boundary
- Property name/number
- Family outstation
- Camp
- Building
- Minor road sealed
- Minor road unsealed
- Local road / track
- Drainage line, water body
- Vertical obstruction
- Range named
- Ridge named
- Relief or water feature named
- Water bore
- Spring
- Spot Height

NT Por 5997

- Inhna Always
- Mulga Camp

MACDONNELL

- Euro Ridge
- Mc Gillen
- Flint

MAP LOCALITY & 1:100,000 MAP SHEET INDEX

NARWIETOOMA 5451	ANBURLA 5551	BURT 5651
HERMANNUS-BURRA 5450	MACDONNELL RANGES 5550	ALICE SPRINGS 5650
PALM VALLEY 5449	JAMES 5549	PEACHY 5649

LOCALITY MAP

MAP COVERAGE

previously Simpsons Gap National Park

ALICE SPRINGS

West Macdonnell National Park

Drive

South Highway

Sturt Highway

Namaltjira

Larapinta

Owen Springs Reserve

Throssy (Goolah Bluff) Conservation Reserve

To Wotjatana

To Falls Creek (WA)

TAMAHU

ROAD

MINNERON

STURT

DRIVE

ALICE SPRINGS

Conservation Reserve

Cartography by Spatial Data and Mapping, Water Resources NT,
Department of Land Resource Management, Northern Territory of Australia, September 2014

Web: www.lrm.nt.gov.au/nrmapnt Map Reference: Simpsons-Gap_Land-Resources_50k

kilometres 0 1 2 3 4 5 kilometres

Black numbered lines are 5 000 metre intervals of the Map Grid of Australia (MGA) Zone 53
Transverse Mercator Projection Horizontal Datum: GDA 94

FIELD SITE LOCATIONS

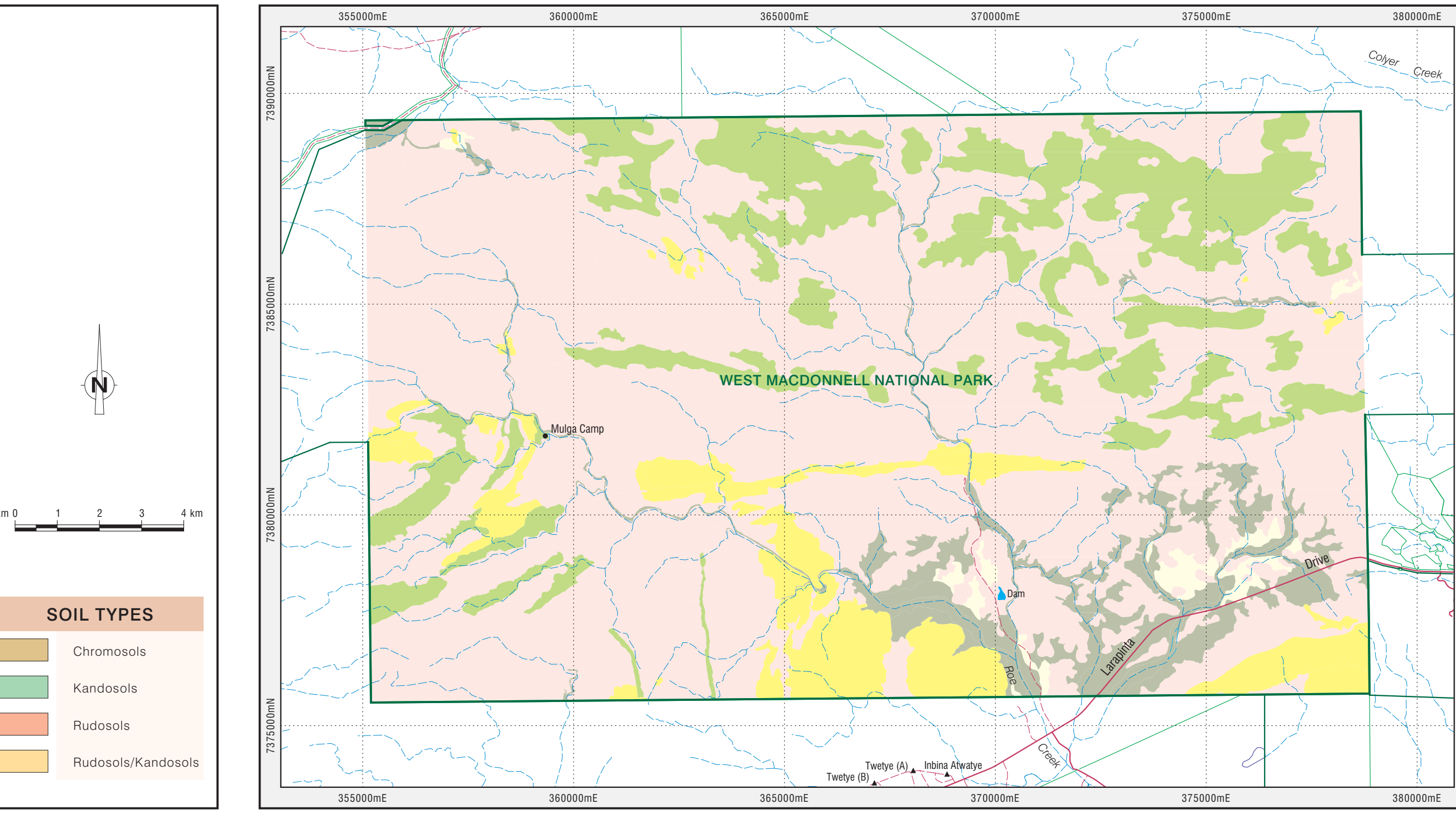
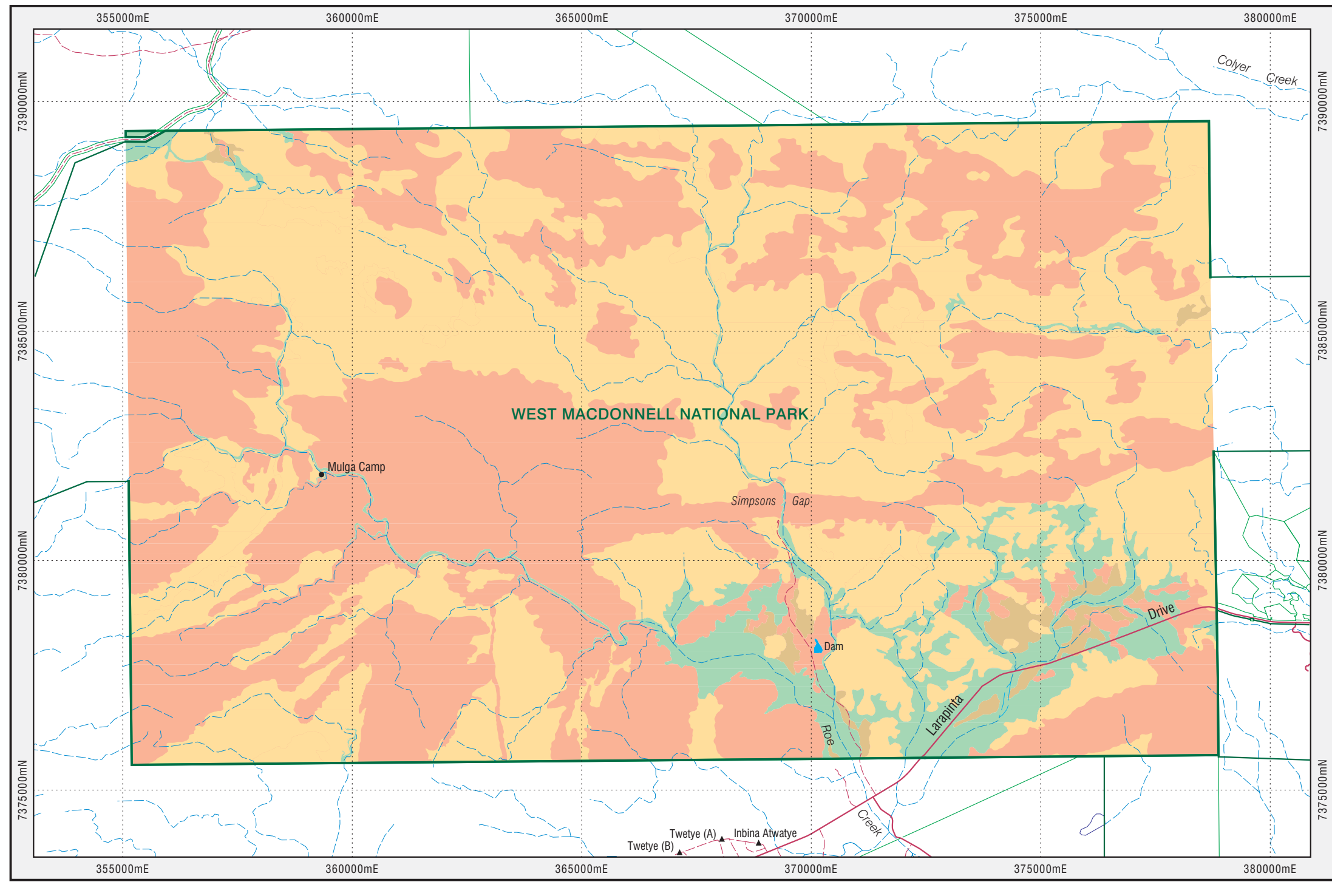
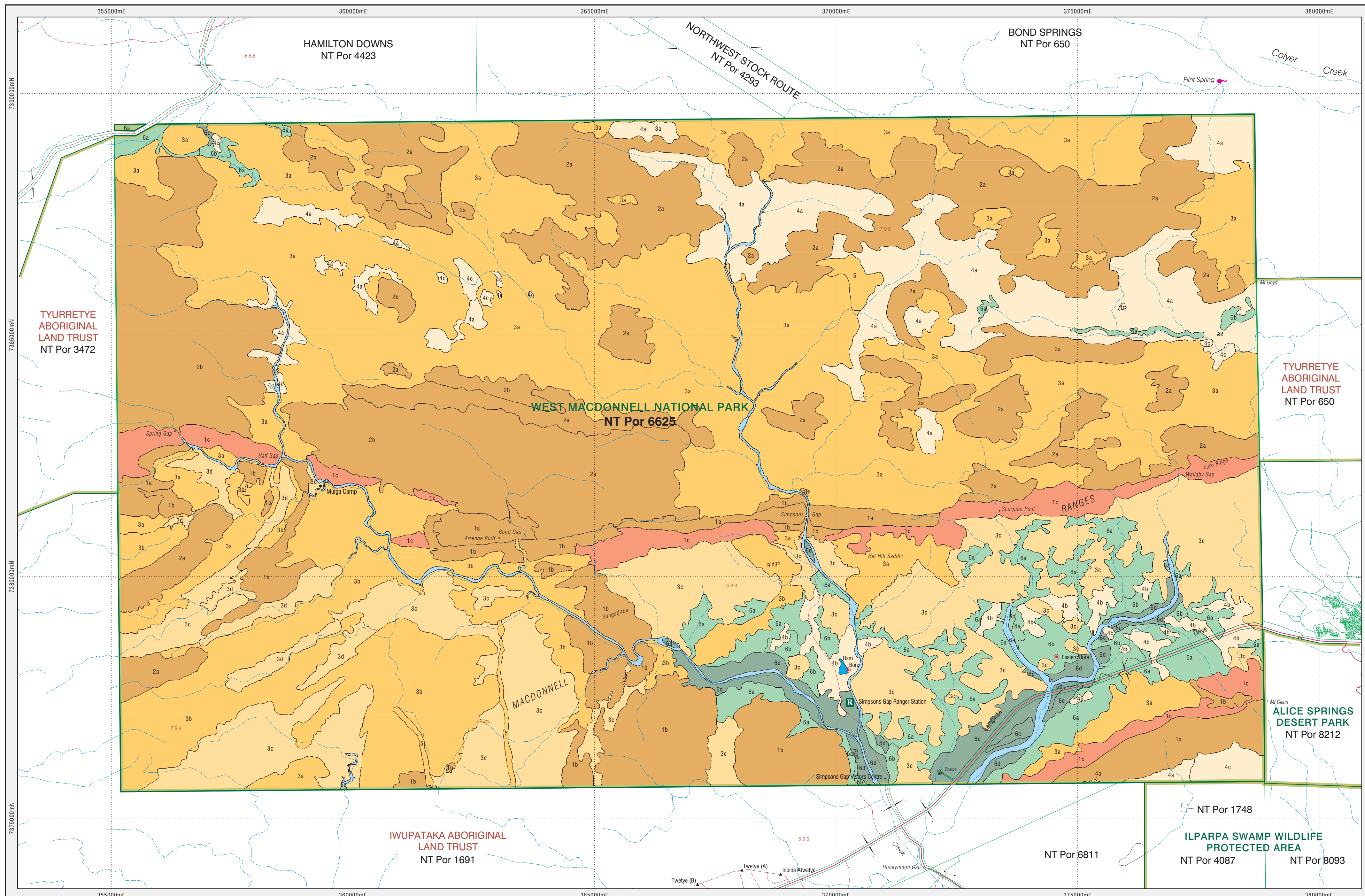
This map was produced on the Geocentric Datum of Australia 1994 (GDA 94)

Attribution-NonCommercial-ShareAlike
BY-NC-SA
This publication is provided under a Creative Commons Attribution 3.0 Australia Licence
<http://creativecommons.org/licenses/by-nc-sa/3.0/au/>

© Northern Territory of Australia

This product and all material forming part of it is copyright belonging to the Northern Territory of Australia. You may use this material for your personal, non-commercial use or use it within your organisation for non-commercial purposes, provided that an appropriate acknowledgement is made and the material is not altered in any way. Subject to the fair dealing provisions of the Copyright Act 1968, you must not make any other use of this product (including copying or reproducing it or part of it in any way) unless you have the written permission of the Northern Territory of Australia to do so.

The Northern Territory of Australia does not warrant that the product or any part of it is correct or complete and will not be liable for any loss, damage or injury suffered by any person as a result of its inaccuracy or incompleteness.



Land resource information has been derived from aerial photograph interpretation and field data describing landform, soil and vegetation. Mapping has been collected according to the national standards and prepared at a scale of 1:50 000. Enlarging this map beyond this scale will not provide further detail.

A site inspection should always accompany mapping for specific areas.

BIBLIOGRAPHIC REFERENCE:

Wood B., Latz P. and Lucas S. (1982) *THE LAND RESOURCES OF SIMPSONS GAP NATIONAL PARK* Technical Report No. LRM 82/6
Resources Planning Unit, Conservation Commission of the Northern Territory

TECHNICAL REFERENCES:

National Committee on Soil and Terrain (2009)
AUSTRALIAN SOIL AND LAND SURVEY FIELD HANDBOOK
3rd Edition. CSIRO Publishing, Melbourne

NORTHCOTE, K. H. (1979) *A Factual Key of the Recognition of Australian Soils*.
3rd Edition Rellim Technical Publications, Glenside, SA

Northern Territory Government

LAND RESOURCES of part of WEST McDONNELL NATIONAL PARK
(previously Simpsons Gap National Park)

For further information contact:
Manager, Land Assessment, Rangelands Division, Department of Land Resource Management
Ph. (08) 8999 4443 Email: rangelands@nt.gov.au Web: www.lrm.nt.gov.au
Level 3, Goyder Centre, 25 Chung Wah Terrace, Palmerston, Northern Territory of Australia.