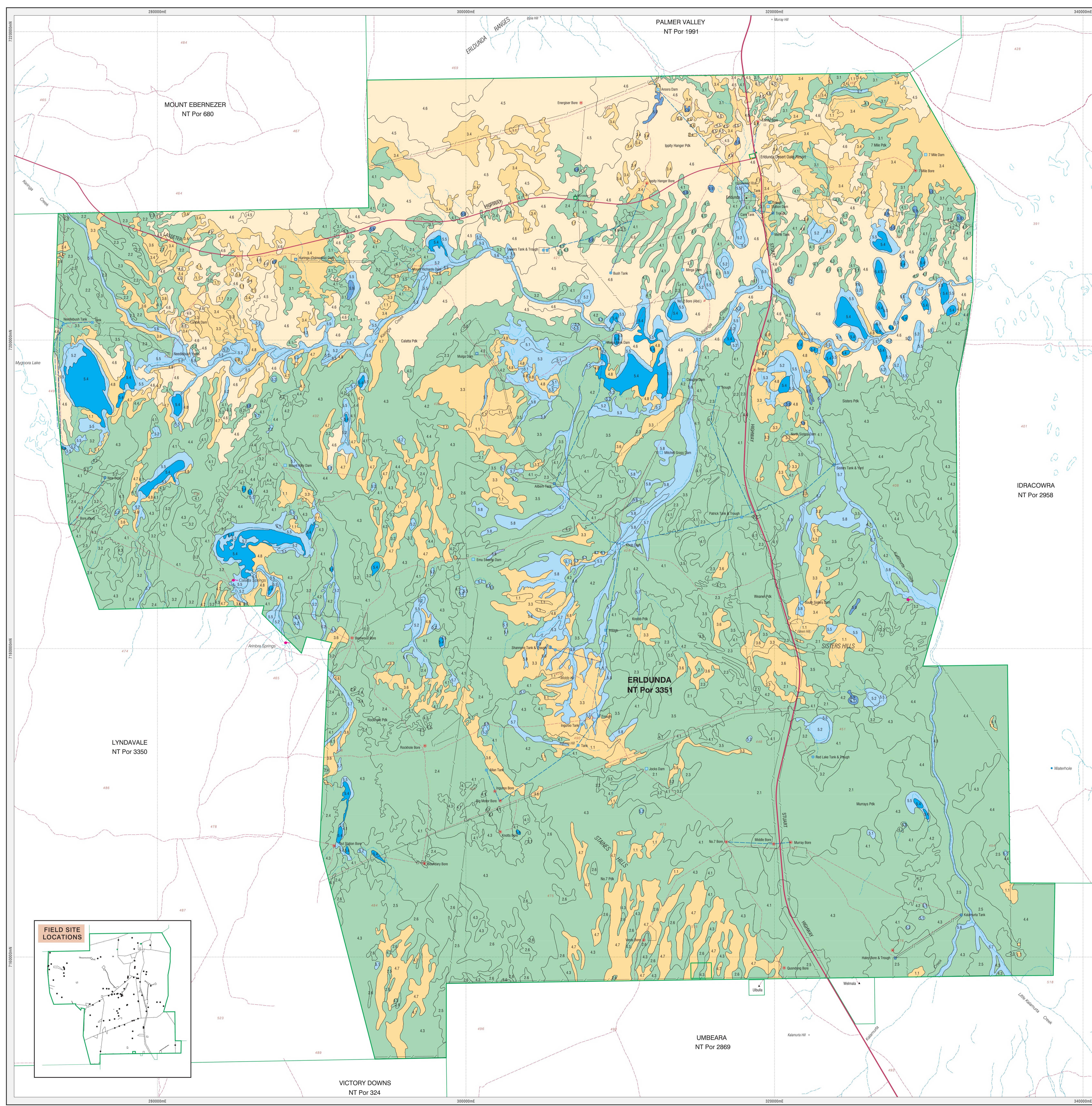


GENERAL FEATURES	
Property boundary	Dam
Pastoral homestead	Water tank
Family Outstation	Trough
Main road	Water pipeline
Main road - sealed	Fence
Minor road - unsealed	Paddock name
Local road / track	Lagoon / waterhole, Spring
Microwave Tower	Drainage
Landing ground	Relief feature, named
Yard	Spot height
Water Bore, Water Bore Abd.	

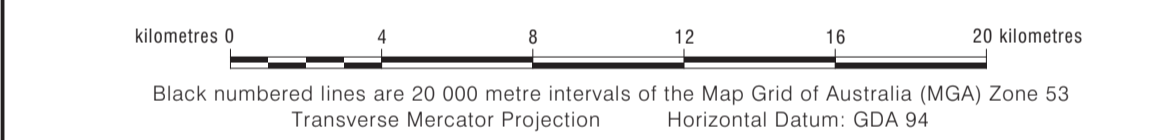
Cartography by Spatial Data and Mapping, Water Resources NT, Department of Land Resource Management, Northern Territory of Australia, September 2014

Web: www.lrm.nt.gov.au/mapsnt
Map Reference: ERLDUNDA_LandResources_100k



LAND UNIT DESCRIPTIONS	
RISES	
1.1	Rises and hills. Lithosols (Rudosols). Mixed spp. low sparse grassland.
3.3	Slopes. Red calcareous soils (Calcarosols). Salicoid spp. and Euphorbia drummondii low forbland.
3.4	Slopes. Red earths (Kandosols). Acacia aneura and Acacia kempeana low open woodland.
3.6	Gentle slopes. Red calcareous soils (Calcarosols). Acacia spp. low open woodland.
4.7	Low rises and longitudinal dunes. Earthy sands (Tenosols). Acacia aneura and Acacia kempeana low open woodland.
4.8	Longitudinal dunes around margins of playa lakes. Earthy sands (Kandosols). Aristida holathera and Eragrostis eriopoda low sparse grassland.
LOW RISES	
4.5	Gently undulating sandplains and low reticulate dunes. Red earths (Kandosols). Eucalyptus gemmyi and Eucalyptus marmorata low open woodland.
4.6	Gently undulating sandplains and reticulate dunes. Earthy sands (Kandosols). Acacia aneura with Acacia estrophiolata low open woodland.
PLAINS	
2.1	Undulating plains. Calcareous red earths (Kandosols). Acacia catoloca and Acacia aneura low open woodland.
2.2	Gently undulating plains. Red earths (Kandosols). Acacia aneura low open woodland.
2.3	Plains. Red calcareous earths (Calcarosols). Mixed spp. low open grassland.
2.4	Gently undulating plains. Red calcareous soils (Calcarosols). Acacia kempeana low open woodland.
2.5	Plains. Calcareous red earths (Kandosols). Acacia spp. low open woodland.
2.6	Gently sloping plains. Red earths (Kandosols). Acacia aneura low woodland.
3.1	Undulating plains. Red calcareous soils (Calcarosols). Acacia kempeana low open woodland.
3.2	Undulating plains. Red calcareous soils (Calcarosols). Sclerolaena diacantha and Mixed spp. low open chenopod shrubland.
3.5	Gently sloping plains. Red calcareous soils (Calcarosols). Maireana astricta mid-high sparse grassland.
4.1	Gently undulating plains. Red earths (Kandosols). Aristida contorta and Eragrostis eriopoda low sparse grassland.
4.2	Gently undulating plains. Sandy red earths (Kandosols). Acacia aneura low open woodland.
4.3	Sandplains. Red earths (Tenosols). Acacia aneura low open woodland.
4.4	Sandplains. Red earths (Rudosols). Acacia aneura and Acacia kempeana low open woodland.
DRAINAGE SYSTEMS	
5.1	Claypans with heavy alluvial deposits. Alluvial soils (Hypersalic Rudosols). Devoid of vegetation.
5.2	Drainage areas and depressions. Alluvial soils (Kandosols). Halosarcia spp. low chenopod shrubland.
5.3	Drainage areas and depressions. Alluvial soils (Kandosols). Halosarcia spp. low chenopod shrubland.
5.5	Terraces and slopes. Red calcareous soils (Calcarosols). Halosarcia spp. and Atriplex nummularia mid-high sparse shrubland.
5.6	Stream channels. Alluvial soils (Stratic Rudosols). Eucalyptus camaldulensis with Eucalyptus coolabah subsp. arida low open woodland.
5.7	Broad drainage floors. Red earths (Kandosols). Acacia aneura and Mixed spp. low woodland.
5.8	Broad drainage floors. Red calcareous soils (Calcarosols). Maireana aphylla low open chenopod shrubland.
SWAMPS	
5.9	Swamps. Alluvial soils (Kandosols). Eucalyptus coolabah subsp. arida mid-high open woodland.
INLAND LAKES	
6.4	Extensive playas. Solonchaks (Hypersalic Hydrosols). Devoid of vegetation.

Example of Land Unit Descriptions		
RISES	Landform	Soil description
5.1	Undulating stony basalt rises. rock outcrop in some areas. Very shallow soils (Leptic Rudosols). Shappy gum low woodland with soil spinifex grasslands. (Eucalyptus brevifolia open woodland)	Vegetation community



Attribution-NonCommercial-ShareAlike
This information is provided under a Creative Commons Attribution 3.0 Australia License
http://www.territory.gov.au/territory/3.0-cc-by-nc-sa

This map was produced on the Geocentric Datum of Australia 1984 (GDA 84)

BIBLIOGRAPHIC REFERENCE:
S.D. Reu and V.T. Garbin (1999) The Land Resources of ERLDUNDA Station Technical Report No. TM 99/2
Natural Resources Division, Department of Lands, Planning & Environment, Alice Springs, Northern Territory

TECHNICAL REFERENCES:
McDonald, R.C., Isbell, R.F., Speight, J.G., Walker, J. and Hopkins, M.S. (1990). AUSTRALIAN SOIL AND LAND SURVEY FIELD HANDBOOK. 2nd Edition. Inkata Press, Melbourne.
Isbell, R.F. (1996). THE AUSTRALIAN SOIL CLASSIFICATION. CSIRO Publishing, Melbourne.

Land resource information has been derived from aerial photograph interpretation and field data describing landform, soil and vegetation. Mapping has been collected according to the national standards and prepared at a scale of 1:100 000. Enlarging this map beyond this scale will not provide further detail.
A site inspection should always accompany mapping for specific areas.

Northern Territory Government

LAND RESOURCES of ERLDUNDA STATION

For further information contact:
Manager, Land Assessment, Rangelands Division, Department of Land Resource Management
Ph: (08) 8999 4443. Email: rangelands@nt.gov.au. Web: www.lrm.nt.gov.au
Level 3, Goyder Centre, 25 Chung Wah Terrace, Palmerston, Northern Territory of Australia.