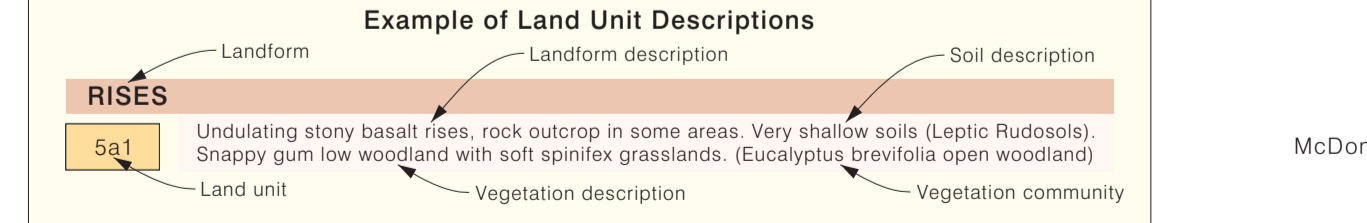


### LAND UNIT DESCRIPTIONS

Code	Description
<b>PLATEAUX</b>	
4.1	Plateau surfaces. Red clay soils (Red Dermosols). Atalaya hemiglauca with Acacia kempeana low open woodland
4.2	Plateau surfaces. Red calcareous soils (Lithocalcic Calcarosols). Acacia kempeana with Atalaya hemiglauca and Ventilago viminalis tall sparse shrubland
<b>LOW HILLS</b>	
1.1	Low hills or undulating rises of sandstone. (Red Kandosols). Acacia aneura low open woodland
1.2	Hills and ridges of gneiss. (Red Kandosols). Acacia aneura with Corymbia opaca and Acacia kempeana low open woodland
1.3	Low hills with shallow gravelly soils. (Red Kandosols). Corymbia opaca and Acacia aneura low open woodland
1.4	Low rocky hills. Gravelly Lithosols (Rudosols). Acacia kempeana with Corymbia opaca and Eremophila freelingii tall sparse shrubland
<b>RISES</b>	
5.3	Gently undulating rises. Medium textured red earth soils (Red Kandosols). Acacia kempeana with Acacia aneura and Atalaya hemiglauca tall sparse shrubland
<b>LOW RISES</b>	
2.3	Low rises. Medium textured red earths (Red Kandosols). Acacia aneura. Acacia kempeana and Senna artemisioides subsp. helmsii mid-high sparse shrubland
2.4	Low dissected rises. Gravelly red earths (Red Kandosols). Acacia aneura and Acacia georginae low open woodland
5.4	Low rises. Red earths (Leptic Rudosols). Acacia kempeana; Acacia tetragonophylla and Senna artemisioides subsp. helmsii mid-high sparse shrubland

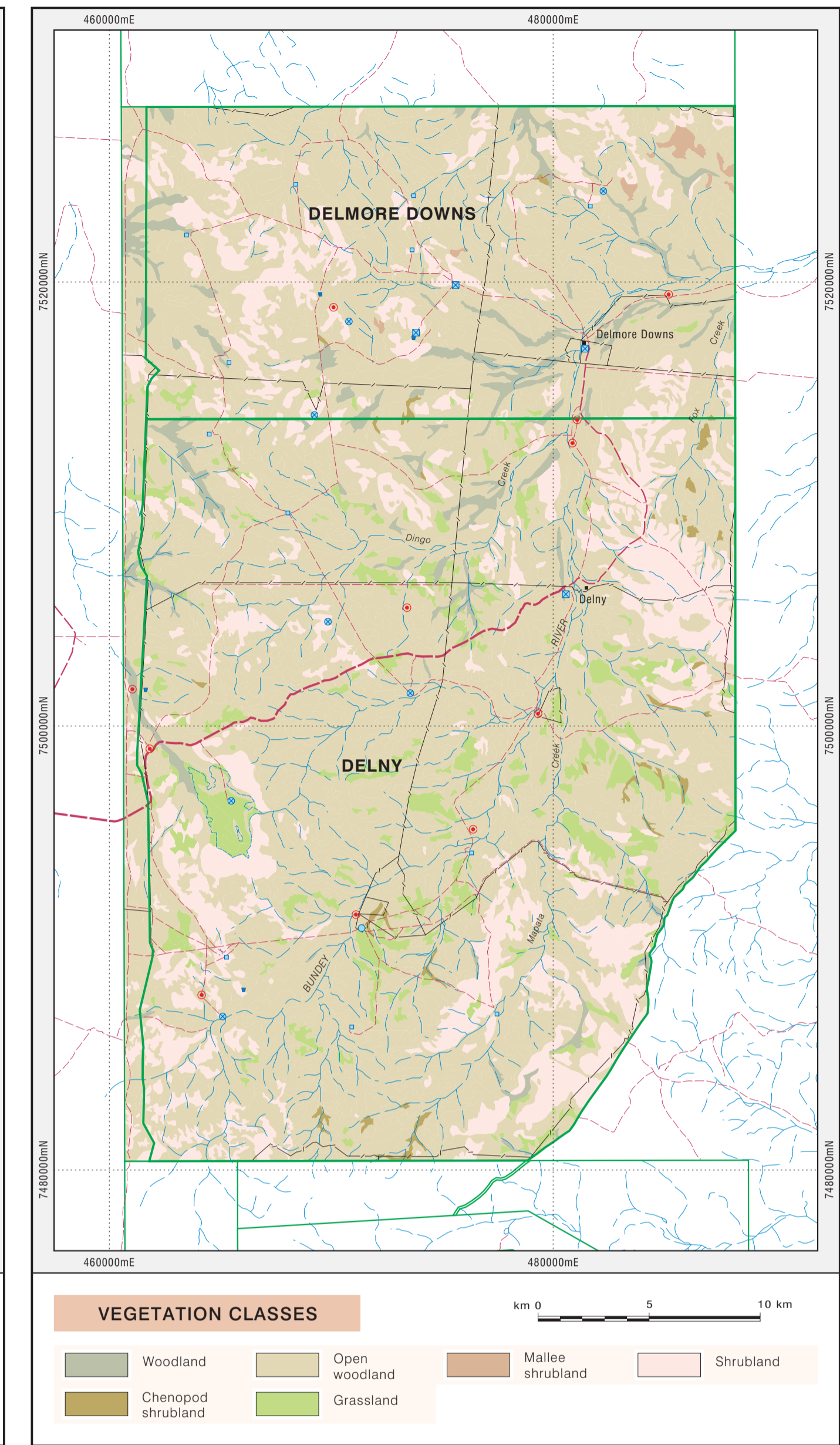


### GENERAL FEATURES

Land unit boundary	Dam	Turkey nest
Property boundary	Water pipeline	Pastoral homestead
Main road: unsealed	Paddock name	Netting Pdk
Minor road: unsealed	Drainage	Lagoon / waterhole
Local road / track	Relief feature, named	Water Bore
Tank	Spot height	

© Northern Territory of Australia

The Northern Territory of Australia does not warrant that the product or any part of it is correct or complete and will not be liable for any loss damage or injury suffered by any person as a result of its inaccuracy or incompleteness.



### VEGETATION CLASSES

Woodland	Open woodland	Mallee shrubland	Shrubland
Chenopod shrubland	Grassland		

### TECHNICAL REFERENCES:

McDonald, R.C., Isbell, R.F., Speight, J.G., Walker, J. and Hopkins, M.S. (1990). *AUSTRALIAN SOIL AND LAND SURVEY FIELD HANDBOOK*. 2nd Edition. Inkata Press, Melbourne.

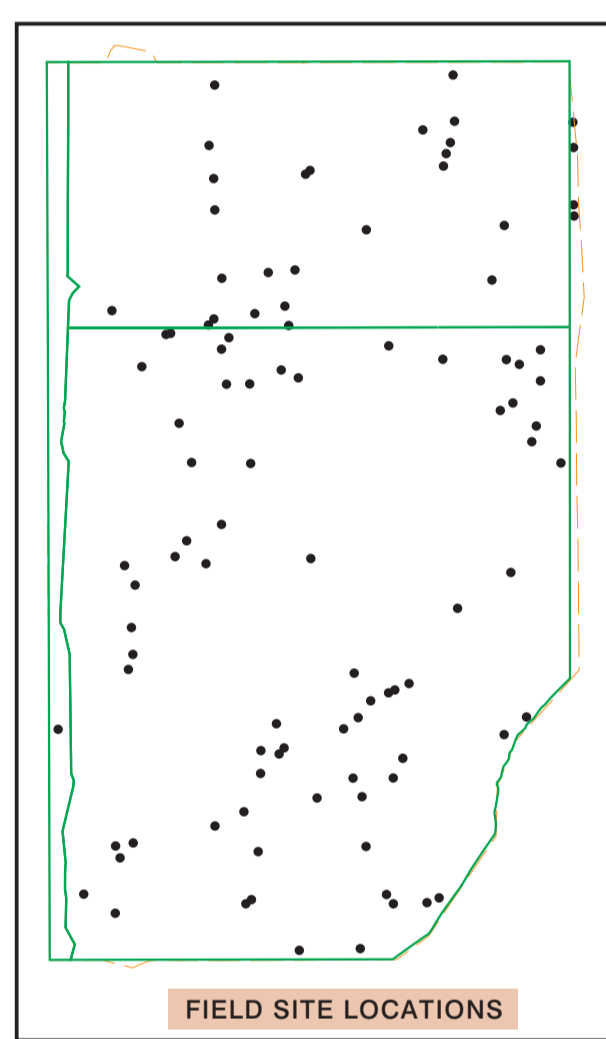
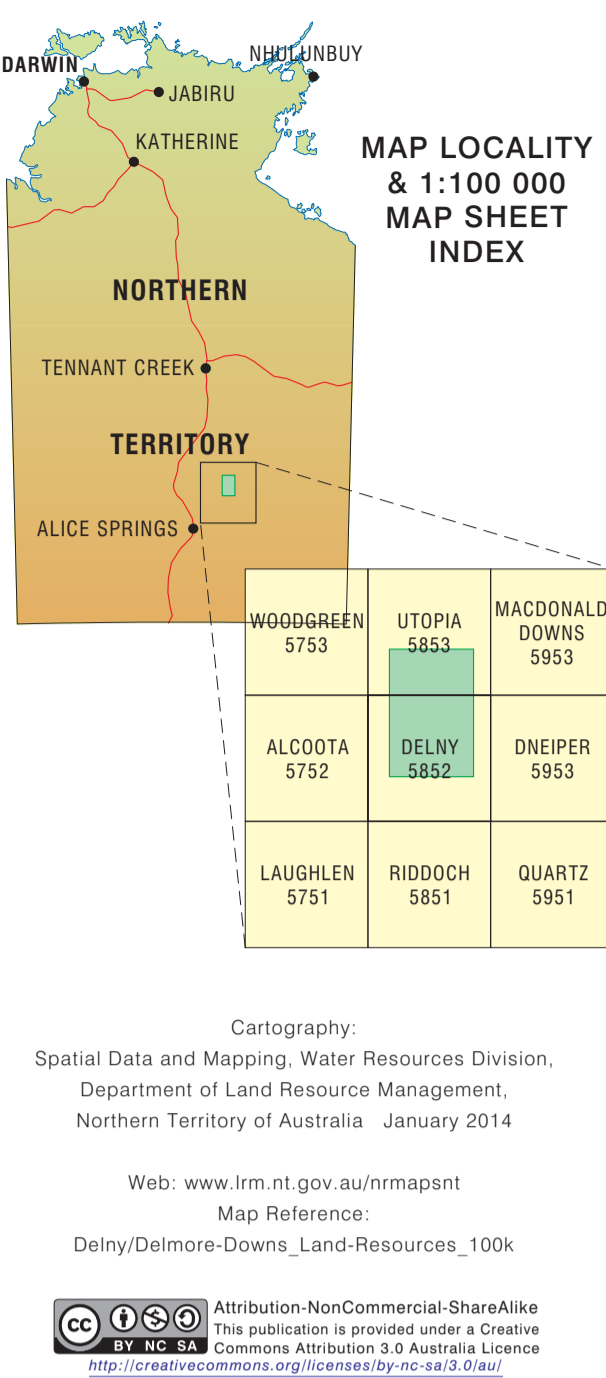
Isbell R.F. (2002). *THE AUSTRALIAN SOIL CLASSIFICATION*. Revised Edition. CSIRO Publishing, Melbourne.

### BIBLIOGRAPHIC REFERENCE:

Grant, A.R. and Kennedy A.J. (2003) Report No: 21/2003A *THE LAND RESOURCES OF DELNY / DELMORE DOWNS STATION*. Natural Systems Division, Department of Infrastructure, Planning and Environment, PO Box 2130, Alice Springs, NT. 0871

Land resource information has been derived from aerial photograph interpretation and field data describing landform, soil and vegetation. Mapping has been collected according to the national standards and prepared at a scale of 1:100 000. Enlarging this map beyond this scale will not provide further detail.

A site inspection should always accompany mapping for specific areas.



### PLAINS (cont.)

5.5	Sandy plains. Earthy sands (Red Kandosols). Acacia kempeana with Acacia aneura and Corymbia opaca tall sparse shrubland
5.6	Gently undulating plains. Calcareous red earths (Red Kandosols). Acacia estrophiolata with Corymbia opaca and Atalaya hemiglauca low open woodland
9.1	Gently undulating sand plains. Earthy sands (Red-Orthic Tenosols). Eucalyptus gomphocephala tall sparse mallee shrubland

### ALLUVIAL PLAINS

4.7	Alluvial plains. Red clays (Vertosols). Astrebla pectinata mid high sparse tussock grassland
6.1	Level alluvial plains. Red earths (Red Kandosols). Acacia aneura with Acacia estrophiolata and Grevillea striata low open woodland
6.2	Level alluvial plains. Red earths (Red Dermosols). Acacia georginae low open woodland
7.4	Alluvial plains. Red earths (Red Kandosols). Acacia estrophiolata low woodland
8.1	Gently sloping alluvial fans. Alluvial soils (Kandosols). Atalaya hemiglauca with Hakea lorea low open woodland
8.2	Gently sloping alluvial fans. Red earths (Red Kandosols). Acacia aneura with Acacia kempeana and Corymbia opaca low open woodland
8.3	Minor floodouts and floodplains. Red earths (Red Kandosols). Acacia estrophiolata mid-high open woodland

### DRAINAGE SYSTEMS

7.1	Gently sloping drainage depressions. Red earths (Red Kandosols). Atalaya hemiglauca with Ventilago viminalis and Hakea eyreana low open woodland
7.2	Level or gently sloping drainage depressions. Red earths (Red Kandosols). Acacia aneura mid-high woodland
7.3	Level or gently sloping drainage depressions. Red earths (Red Chromosols). Maireana aphylla low sparse chenopod shrubland

This map was produced on the Geocentric Datum of Australia 1994 (GDA 94)

Scale: 0 to 10 Kilometres

Black numbered lines are 10 000 metre intervals of the Map Grid of Australia (MGA) Zone 53 Transverse Mercator Projection. Horizontal Datum: GDA 94

**Northern Territory Government**

# LAND RESOURCES OF DELNY / DELMORE DOWNS STATION

For further information contact:  
Manager, Land Assessment, Rangelands Division, Department of Land Resource Management  
Ph. (08) 8999 4443 Email: rangelands@nt.gov.au Web: www.lrm.nt.gov.au  
Level 3, Goyder Centre, 25 Chung Wah Terrace, Palmerston, Northern Territory of Australia.