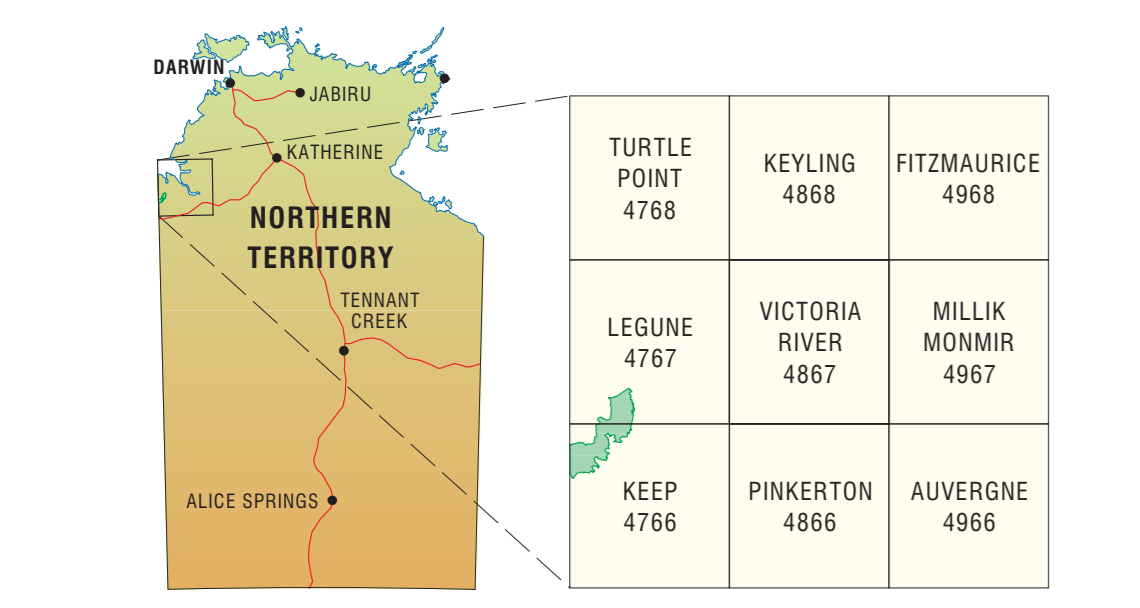
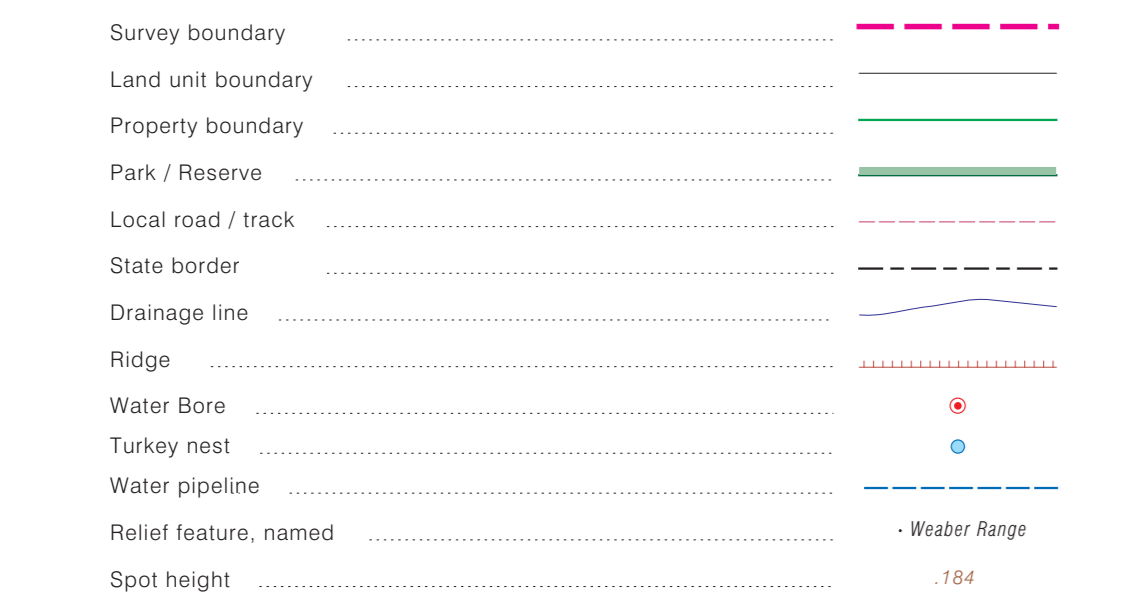


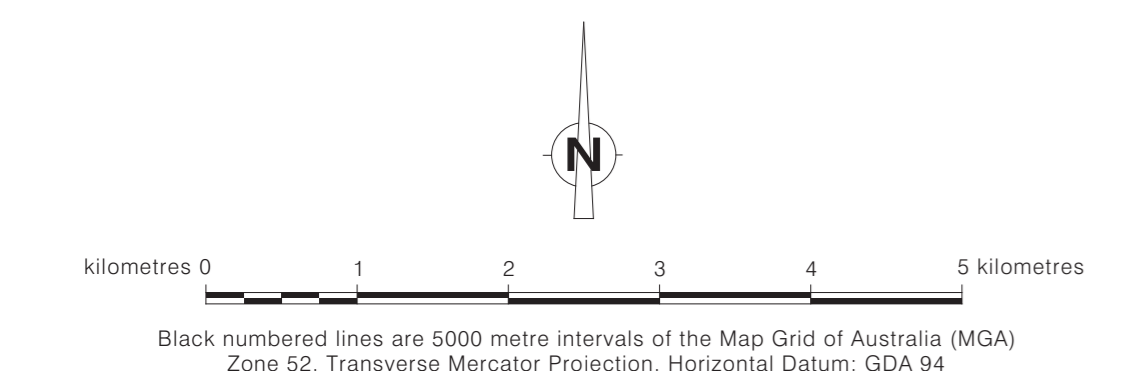
MAP LOCALITY & 1:100 000 MAP SHEET INDEX



GENERAL FEATURES

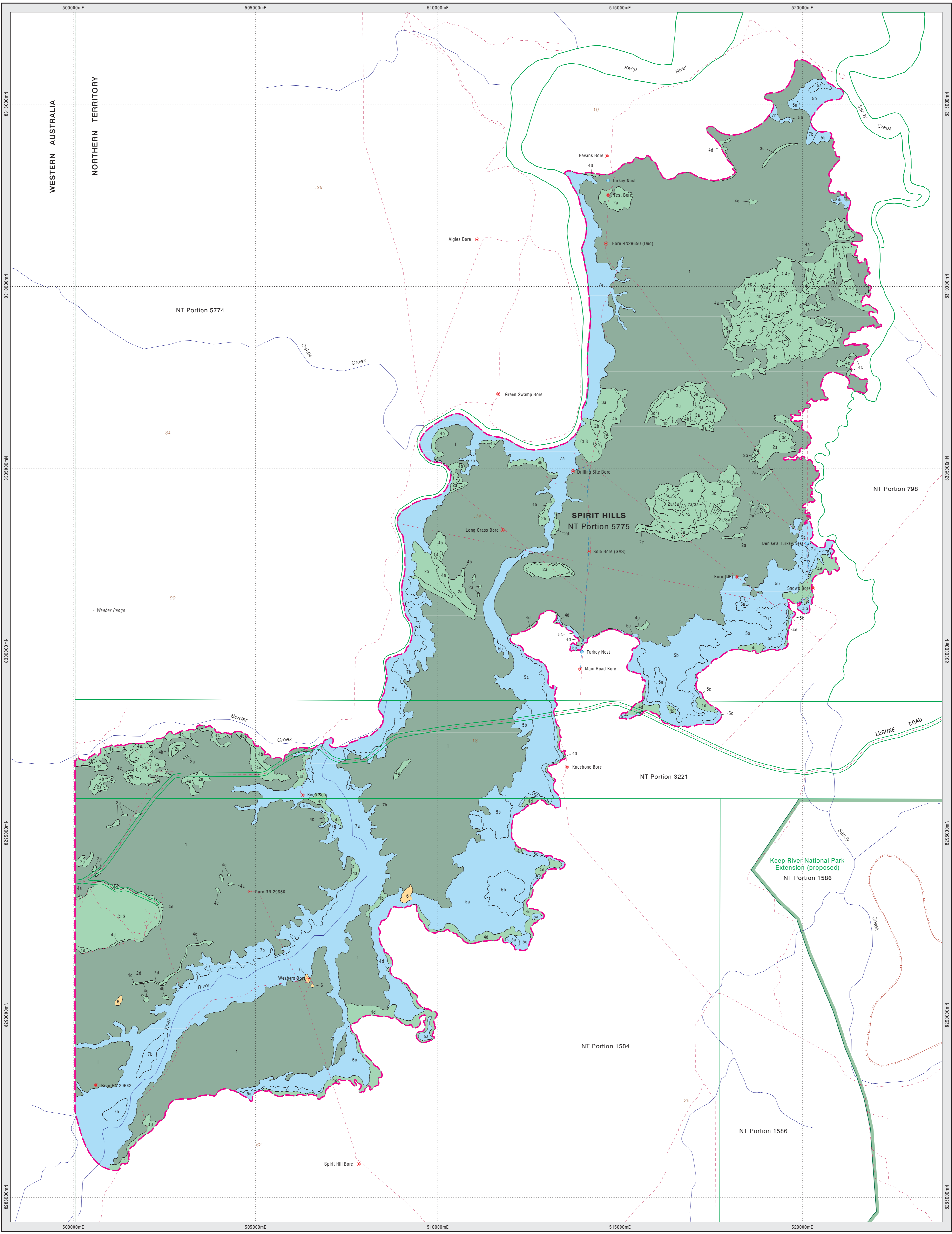


BASE INFORMATION DATA SOURCES:
Department of Infrastructure, Planning and Logistics, NT of Australia.
Geoscience Australia, Australian Government.



This map was produced on the Geocentric Datum of Australia 1994 (GDA 94)
Cartography by R. Lim
Geospatial Services, Water Resources
Department of Environment and Natural Resources
Northern Territory of Australia, December 2018.

Creative Commons Attribution 4.0 International Public License (CC BY 4.0)
https://creativecommons.org/licenses/by/4.0/legalcode
Department of Environment and Natural Resources
©Northern Territory Government



LAND UNIT DESCRIPTIONS

ALLUVIAL PLAINS

1 Gentle slopes; occurs throughout the clay areas except in eroded, lowlying and relatively flat or concave situations. Very deep Brown cracking clays (Cununurra), *Themeda triandra*, *Sehima nervosum* and *Aristida latifolia* open grassland.

PLAINS

2a Gently sloping areas; usually in higher parts of the landscape. Deep Red brown earths (Bonaparte), *Corymbia polysciada*, *Corymbia confertiflora*, *Eucalyptus tectifica* woodland.

2a/3a Gently sloping to flat areas; usually in higher parts of the landscape. Deep Red brown earths (Bonaparte), *Corymbia polysciada*, *Corymbia confertiflora*, *Eucalyptus tectifica* woodland. 3a component present.

2b Gently sloping areas; usually in higher parts of the landscape. Deep Red brown earths (Bonaparte), *Corymbia foelschiana*, *Corymbia polysciada*, *Eucalyptus tectifica* woodland or minor open forest.

2c Gently sloping to flat areas; usually in higher parts of the landscape. Deep Red earths (Weaber), *Corymbia polysciada*, *Corymbia confertiflora*, *Eucalyptus tectifica* woodland.

2d Raised linear areas; probably exhumed stream beds or old coarse levees; significant marginal slopes. Deep gravelly Red earths (Weaber-gravelly phase), *Corymbia foelschiana*, *Corymbia polysciada*, *Corymbia bella* woodland.

3a Gently sloping to flat; occurring only in the area influenced by Sandy Creek. Deep red-brown earth/solodic soil intergrades (Benton), *Melaleuca minutifolia* and *Eucalyptus microtheca* very dense woodland.

3a/3c Gently sloping to flat; occurring only in the area influenced by Sandy Creek. Deep red-brown earth/solodic soil intergrades (Benton), *Melaleuca minutifolia* and *Eucalyptus microtheca* very dense woodland. 3c component present.

3b Gently sloping to flat; occurring only in the area influenced by Sandy Creek. Deep red-brown earth/solodic soil intergrades (Benton), *Grevillea striata* woodland.

3c Flat to gently sloping; occurring only in the area influenced by Sandy Creek. Deep red-brown earth/solodic soil intergrades (Benton), *Bauhinia cunninghamii* and *Eucalyptus microtheca* open woodland.

3d Flat to gently sloping; occurring only in the area influenced by Sandy Creek. Cracking clay intergrades (Milligan), *Corymbia bella* and *Bauhinia cunninghamii* open woodland.

4a Gently sloping to flat areas; mainly in the area influenced by Sandy Creek. Deep red-brown earth/solodic soil intergrades (Benton), *Eucalyptus microtheca* and *Bauhinia cunninghamii* sparse woodland.

4b Gently sloping to flat areas; mainly in the area influenced by Sandy Creek. Deep red-brown earth/solodic soil intergrades (Benton), *Eucalyptus microtheca* or *Bauhinia cunninghamii* sparse woodland or mixed species grassland.

4c Gently sloping to flat areas; mainly in the area influenced by Sandy Creek. Very deep Brown cracking clays (Cununurra), *Themeda triandra*, *Sorghum plumosum*, *Sehima nervosum* mixed species grassland.

4d Low lying areas; in the junction complex near the edges of the plains; mainly where they abut Cockatoo land system. Cracking clay intergrades (Milligan), *Corymbia bella* open woodland with minor mixed species, grassland in depressions.

CLS Gentle slopes and crests of gently undulating plains (Cockatoo Land system). Deep red sands (Cockatoo) or Deep yellow sands (Paga); minor occurrence of greyish sand merging into mottled yellow sand. *Eucalyptus tetradonta*, *Eucalyptus miniata* woodland with occasional *Corymbia dichromophloia*.

RISES

6 Abrupt sandstone rock outcrops to 10 m high; mainly occurring in the south of the plains. Mostly sandstone outcrop. *Tridax* sp. sparse hummock grassland.

DRAINAGE SYSTEMS

4e Locally depressed areas; small swamps. Cracking clays (Keep-flooded phase), *Excocarpia parvifolia* and *Terminalia* sp. dense shrubland.

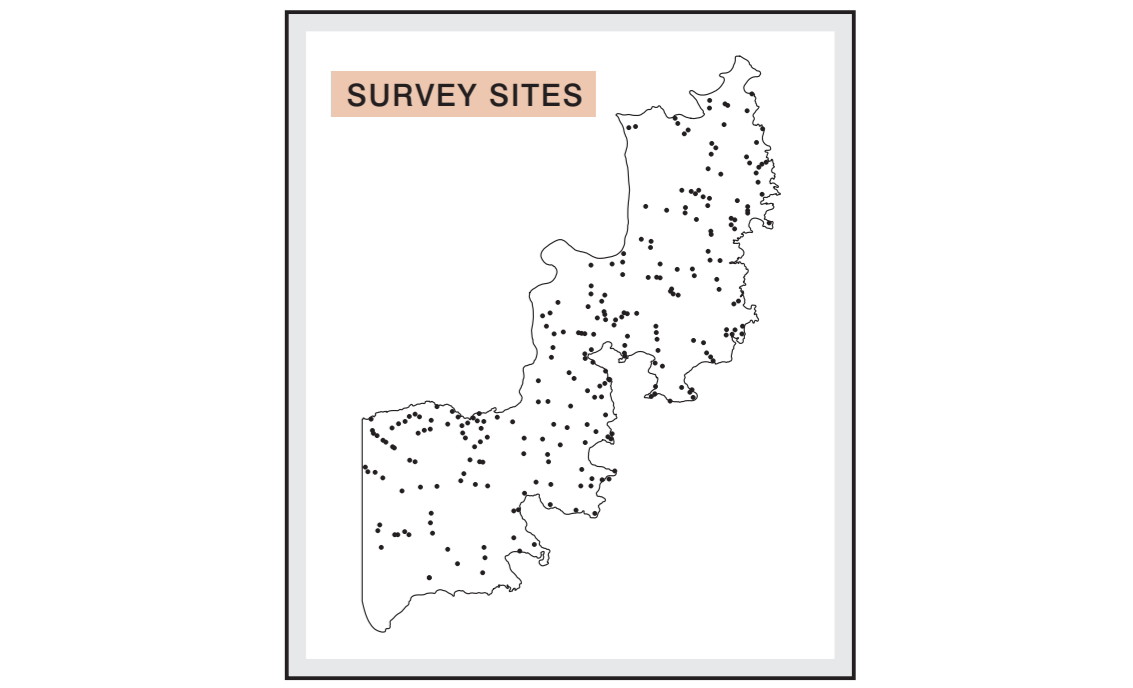
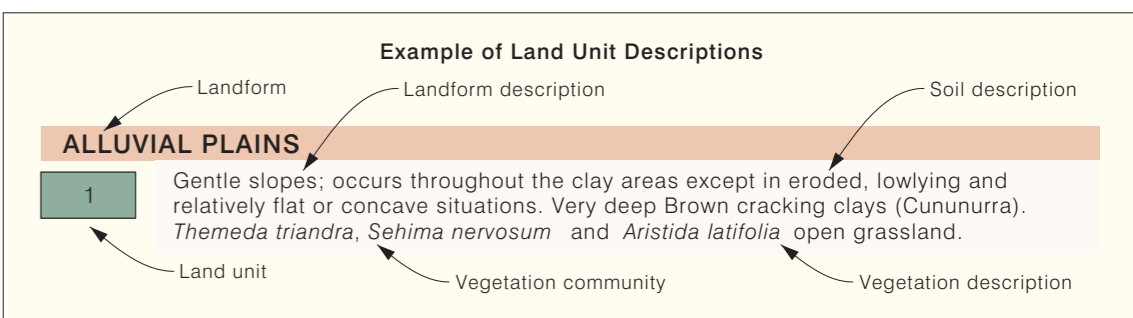
5a Flat low lying areas or concave contained areas; subject to seasonal inundation. Cracking clays (Aquitaine with distinct hydromorphic characteristics), *Eucalyptus microtheca* and *Excocarpia parvifolia* dense woodland.

5b Almost flat low lying areas usually just upslope from unit 5a; subject to seasonal inundation. Cracking clays (Aquitaine with distinct hydromorphic characteristics), *Eucalyptus microtheca*, *Excocarpia parvifolia* and *Bauhinia cunninghamii* open woodland.

5c Narrow linear depressed areas. Cracking clays (Aquitaine with distinct hydromorphic characteristics and inclusions of stone, gravel and sand), *Sorghum timoreense* grassland.

7a Major rivers and creeks and associated steep and strongly eroded banks. Cracking clays (Cununurra-eroded phase), alluvial red earths and regosols; all severely eroded. *Melaleuca* spp., *Corymbia bella* and *Eucalyptus microtheca* open forest.

7b Sloping margins of the plains immediately adjacent to the major river and creek banks; severe natural erosion. Cracking clays (Cununurra-eroded phase) between 1m and 30cm deep over red clay; severely eroded and truncated. *Bauhinia cunninghamii* dense woodland.



MAP DISCLAIMER:
Land resource information has been derived from aerial photograph interpretation and field collection of data describing landform, soil and vegetation. Landform, soil and vegetation field assessments conform to national standards and support mapping at a scale of 1:50 000. Final mapping is presented at a scale of 1:50 000.
When assessing specific areas within the mapping it is recommended a site inspection be undertaken to establish unmappped variation and confirm mapping accuracy on the ground.

BIBLIOGRAPHIC REFERENCE:
Aldrick, J.M. and Moody P.W. (1977)
Report on the Soils of the Lower Weaber and Keep Plains, NT (1977)
(Report Number LRD77019)
Animal Industry and Agriculture Branch,
Department of the Northern Territory, Darwin NT

TECHNICAL REFERENCES:
Isbell RF (2002). *The Australian soil classification*. Revised Edition. Melbourne, CSIRO Publishing.
National Committee on Soil and Terrain (2009). *Australian soil and land survey field handbook*. 3rd Edition. Melbourne, CSIRO Publishing.

NORTHERN TERRITORY GOVERNMENT

LAND RESOURCES of THE KEEP RIVER PLAINS

FOR FURTHER INFORMATION CONTACT:
Department of Environment and Natural Resources
Director, Land Assessment, Rangelands Division
Ph: (08) 8999 4443. Email: rangelands@nt.gov.au Web: http://dnen.nt.gov.au
Level 3, Goyler Centre, 25 Chung Wah Terrace, Palmerston, Northern Territory of Australia.

NR Maps: <http://nrmaps.nt.gov.au>
Map Reference: Keep-River-Plains_Land-Resources_Map