

Northern Territory Government
**LAND RESOURCES of
 BRUNETTE DOWNS STATION**

For further information contact:
 Manager, Land Science Branch, Natural Resources Division,
 Department of Natural Resources, Environment, The Arts and Sport
 Ph. (08) 8999 3606, Fax. (08) 8999 3666
 Goyder Centre, Chung Wah Terrace, Palmerston, Northern Territory of Australia.

BIBLIOGRAPHIC REFERENCE:
 Edgose, G., Kennedy, A. *THE LAND RESOURCES OF BRUNETTE DOWNS STATION (1998)*
 Technical Memorandum TM 96/01 Natural Resources Division,
 Department of Lands, Planning and Environment, P.O. Box 1512 Alice Springs NT. 0871

TECHNICAL REFERENCES:
 McDonald, R.C., Isbell, R.F., Speight, J.G., Walker, J. and Hopkins, M.S. (1990)
AUSTRALIAN SOIL AND LAND SURVEY FIELD HANDBOOK 2nd Edition
 Inkata Press, Melbourne
 Isbell R.F. (1996) *The AUSTRALIAN SOIL CLASSIFICATION*
 CSIRO Publishing, Melbourne

LAND UNIT DESCRIPTIONS

RISES
 1.1 Low hills and rises. Lithosols (Rudosols). Triodia bertextura mid-high hummock grassland

LOW RISES
 1.1 Low hills and rises. Lithosols (Rudosols). Triodia bertextura mid-high hummock grassland

3.2 lg Gently undulating rises, scattered crabhole gilgai with linear gilgai. Brown clays (Vertosols). Acacia cambagei mid-high open woodland

3.3 Gently undulating rises and scattered crabhole gilgai. Brown clays (Vertosols). Acacia cambagei mid-high open woodland

3.4 Low rises. Brown earths (Kandosols). Enneapogon spp., Tragus australianus and Sporobolus australisicus low open grassland

3.5 Low rises with mounds and gilgai within clay plains. Brown clays (Kandosols). Eucalyptus microtheca mid-high open woodland

PLAINS
 2.1 Level to very gently sloping plains. Red earths (Kandosols). Corymbia opaca and Corymbia dichromopholia low open woodland

2.2 Level to gently sloping plains. Calcareous clays (Calcarosols). Dactyloctenium radulans and Enneapogon spp., low open grassland with isolated trees

2.2 s Level to gently sloping plains with stony rises. Calcareous clays (Calcarosols). Dactyloctenium radulans and Enneapogon spp., low open grassland with isolated trees

2.3 Low narrow ridges flanking or extending across lake floors. Calcareous grey clays (Calcarosols). Eucalyptus microtheca and Excoecaria parvifolia low open woodland

2.4 Level to gently sloping plains and pediplains. Red earths (Kandosols). Eucalyptus pruinosa or Atalaya hemiglaucua and Ventilago viminalis and Bauhinia cunninghamii low open woodland

2.5 Gently undulating plains and pediplains. Red earths (Kandosols). Acacia lysipholia tall open shrubland (weakly groved)

2.6 Gently undulating plains, with extensive bare areas. Red earths (Kandosols). Eucalyptus pruinosa and Bauhinia cunninghamii low open woodland

2.7 Level plains and pediplains with bare areas. Brown earths (Kandosols). Bauhinia cunninghamii mid-high open woodland

3.1 Gently undulating plains, scattered gilgai and pale sandy patches. Brown clays (Kandosols). Dactyloctenium radulans low open grassland

3.2 Stony rises and small plains. Brown clays (Kandosols). Aristida latifolia mid-high open grassland. Occasional emergent trees

3.6 Low rises and undulating plains. Brown clays (Vertosols). Astrebla pectinata mid-high grassland

3.7 Gently undulating plains with linear gilgai. Brown clays (Kandosols). Isellema spp., Sporobolus australisicus and Dactyloctenium radulans low open grassland; gilgai with Astrebla spp. mid-high open grassland

3.7 s Gently undulating plains; linear gilgai and stony rises. Brown clays (Kandosols). Isellema spp., Sporobolus australisicus and Dactyloctenium radulans low open grassland; gilgai with Astrebla spp. mid-high open grassland

3.7 sa Gently undulating plains; linear gilgai and stony rises. Brown clays (Kandosols). Isellema spp., Sporobolus australisicus and Dactyloctenium radulans low open grassland

3.8 Gently undulating plains. Brown clays (Vertosols). Eucalyptus microtheca low open woodland

DOWNS PLAINS
 4.1 Level plains. Brown clays (Vertosols). Astrebla spp. mid-high grassland

4.1/4.3 Level plains. Brown clays (Vertosols). Astrebla spp. mid-high grassland with minor mixed annual spp. low open grassland

4.1 bm Level plains. Brown clays (Vertosols). Astrebla spp. mid-high grassland

4.1 lg Level plains with linear gilgai. Brown clays (Vertosols). Astrebla spp. mid-high grassland

4.1 s Level plains with stony rises. Brown clays (Vertosols). Astrebla spp. mid-high grassland

4.1 su Level plains. Brown clays (Vertosols). Astrebla spp. mid-high grassland with emergent Vachellia sutherlandii

4.1 vi Level plains. Brown clays (Vertosols). Astrebla spp. mid-high grassland with emergent Acacia victoriae

4.2 Level plains. Brown clays (Vertosols). Astrebla pectinata mid-high grassland

4.3 Level to very gently undulating plains. Brown clays (Vertosols). Mixed annual spp. low grassland

4.3/4.1 Level to very gently undulating plains. Brown clays (Vertosols). Mixed annual spp. low grassland with minor Astrebla spp. mid-high grassland

4.3 b Level to very gently undulating plains. Brown clays (Vertosols). Dactyloctenium radulans mixed annual spp. low grassland

4.3 f Level to very gently undulating plains. Brown clays (Vertosols). Isellema spp. with mixed annual spp. low grassland

4.3 lg Level to very gently undulating plains with linear gilgai. Brown clays (Vertosols). Isellema spp. low grassland

4.3 p Level to very gently undulating plains. Brown clays (Vertosols). Panicum laevinoide mixed annual spp. low grassland

4.3 s Level to very gently undulating plains with stony rises. Brown clays (Vertosols). Mixed annual spp. low grassland

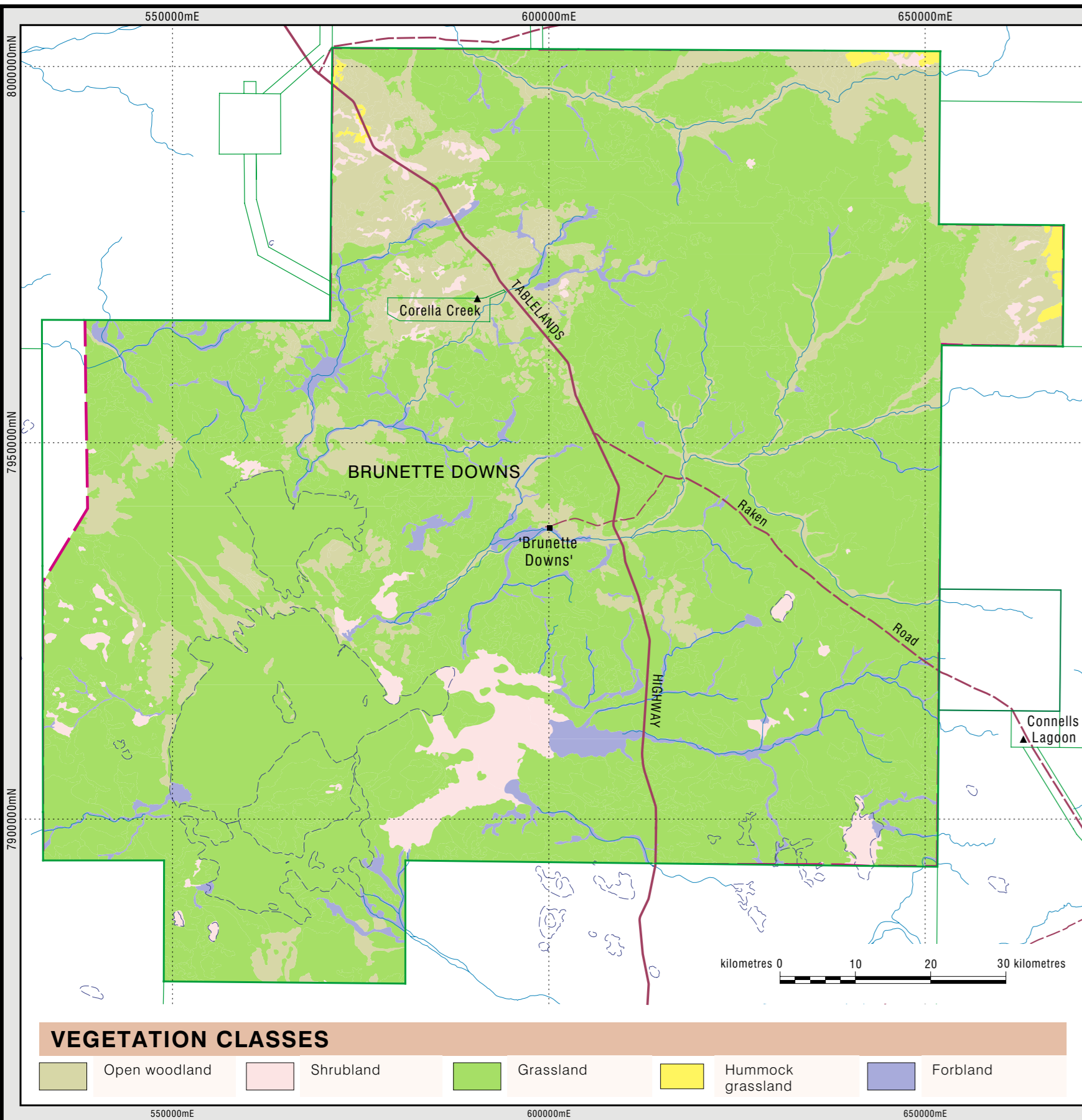
4.3 vi Level to very gently undulating plains. Brown clays (Vertosols). Mixed annual spp. low grassland with emergent Acacia victoriae

4.3 w Level to very gently undulating plains. Brown clays (Vertosols). Aristida latifolia with mixed annual spp. Mid high open grassland

4.4 Level plains. Brown clays (Vertosols). Sorghum timorense mid high grassland

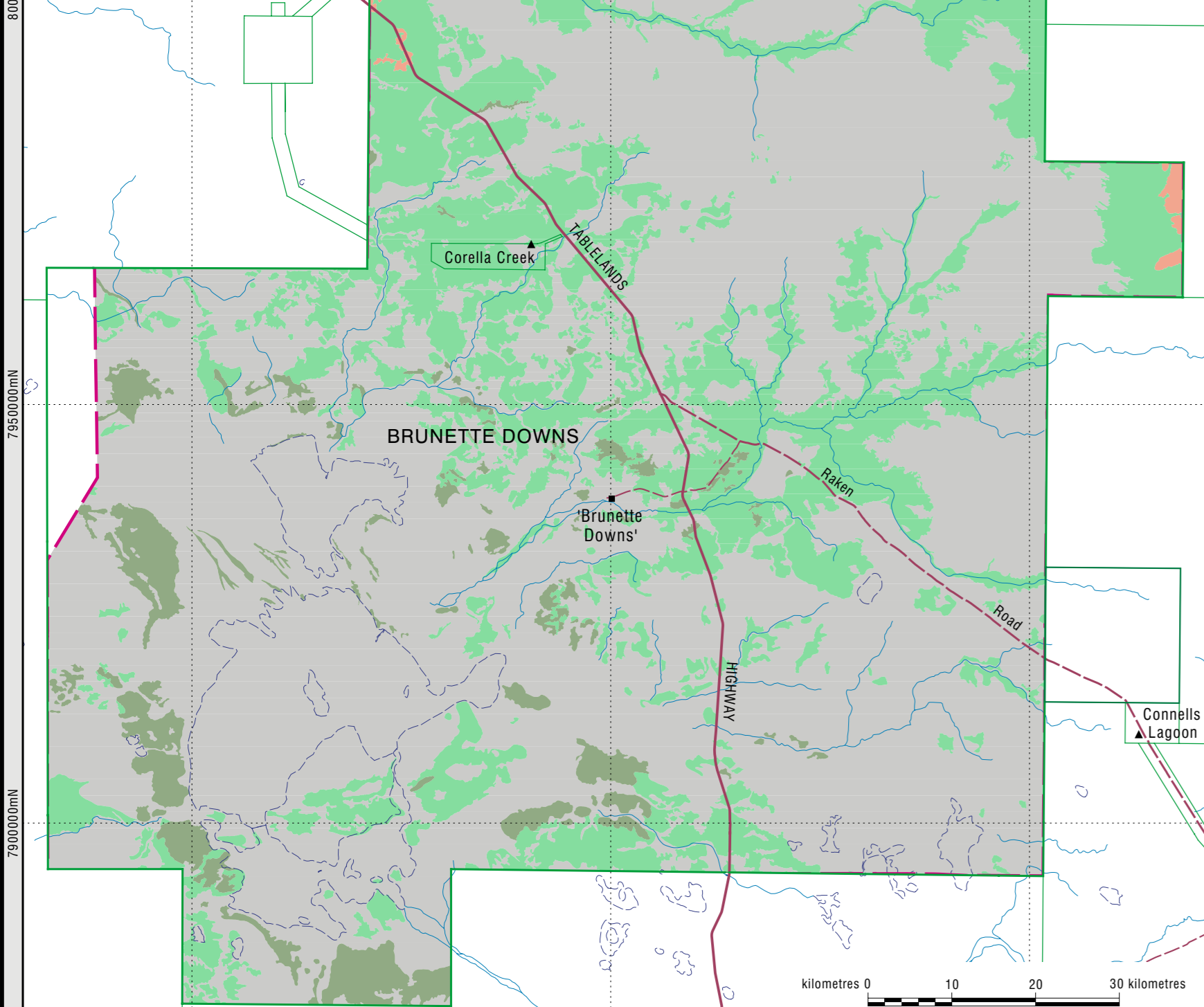
4.4 s Level plains with stony rises. Brown clays (Vertosols). Sorghum timorense mid high grassland

4.5 Level, cracking clay plains. Grey clays (Vertosols). Aristida latifolia and Astrebla spp. mid-high grassland



VEGETATION CLASSES

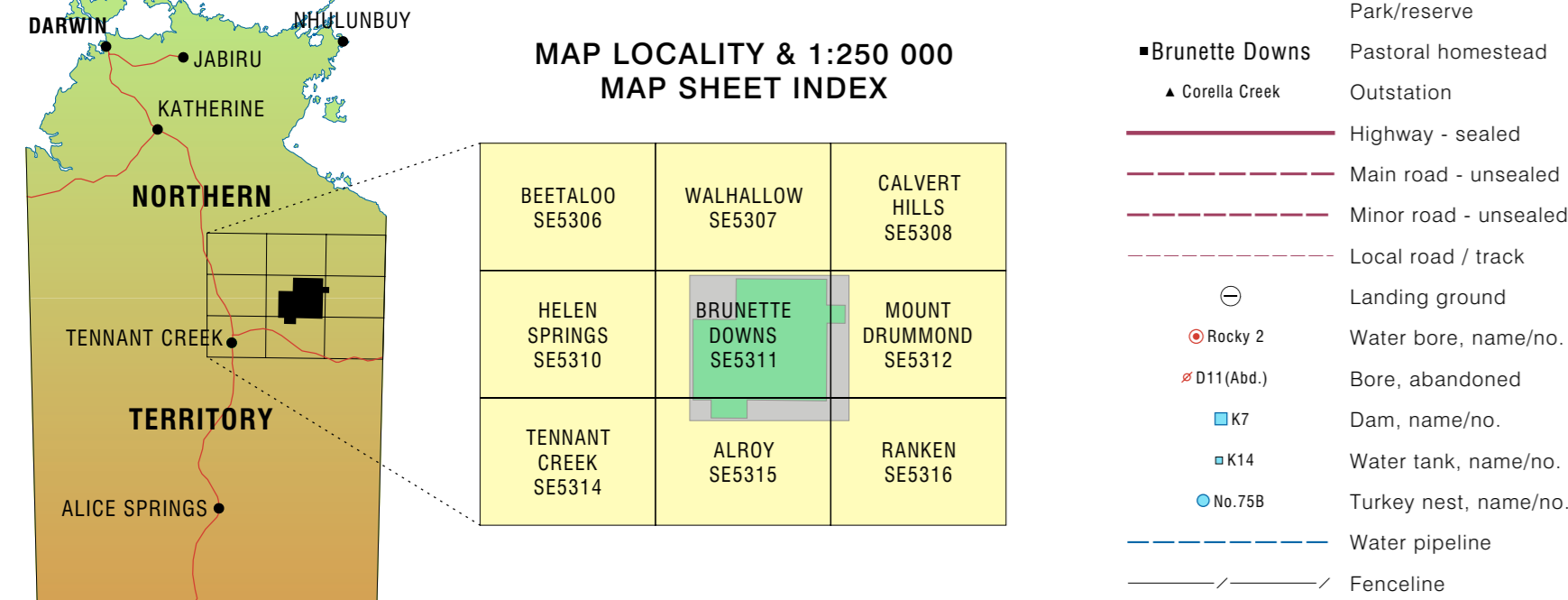
Open woodland Shrubland Grassland Hummock grassland Forbland



SOIL TYPES

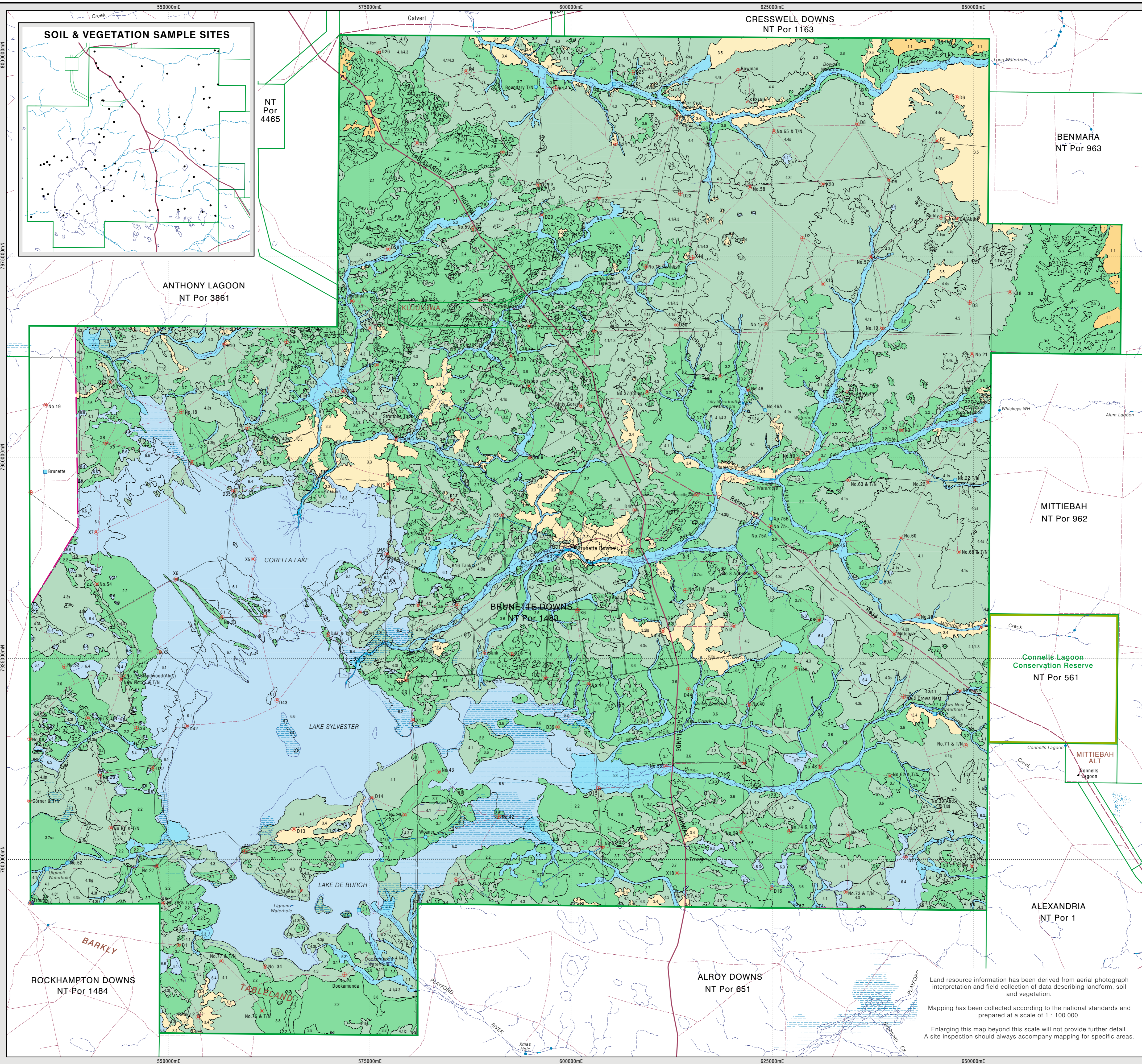
Calcarosols Kandosols Rudosols Vertosols

Cartography by L. Fritz, June 2010
 Spatial Data and Mapping, Natural Resources Division,
 Department of Natural Resources, Environment, The Arts and Sport,
 Northern Territory of Australia
 File Reference: Brunette-Downs-Stn_Land-Resources



GENERAL FEATURES

- Land unit boundary
- Extent of mapping
- Property boundary
- Park/reserve
- Pastoral homestead
- Outstation
- Highway - sealed
- Main road - unsealed
- Minor road - unsealed
- Local road / track
- Landing ground
- Water bore, name/no.
- Bore, abandoned
- Dam, name/no.
- Water tank, name/no.
- Turkey nest, name/no.
- Water pipeline
- Fence/line
- Rocky 2
- D11 (Abd.)
- K7
- K14
- No. 758
- Vertical obstruction
- Watercourse, mainly dry
- Waterhole
- Lake, mainly dry
- Swamp
- Subject to inundation



This map was produced on the Geocentric Datum of Australia 1994 (GDA 94)

Black numbered lines are 25 000 metre intervals of the Map Grid of Australia (MGA) Zone 53 Transverse Mercator Projection Horizontal Datum: GDA 94

© Northern Territory of Australia

This product and all material forming part of it is copyright belonging to the Northern Territory of Australia. You may use this material for your personal, non-commercial use or use it within your organisation for non-commercial purposes, provided that an appropriate acknowledgement is made and the material is not altered in any way. Subject to the fair dealing provisions of the Copyright Act 1968, you must not make any other use of this product (including copying or reproducing it or part of it in any way) unless you have the written permission of the Northern Territory of Australia to do so.

The Northern Territory of Australia does not warrant that the product or any part of it is correct or complete and will not be liable for any loss damage or injury suffered by any person as a result of its inaccuracy or incompleteness.

Land resource information has been derived from aerial photograph interpretation and field collection of data describing landform, soil and vegetation.

Mapping has been collected according to the national standards and prepared at a scale of 1 : 100 000.

Enlarging this map beyond this scale will not provide further detail. A site inspection should always accompany mapping for specific areas.

INLAND LAKES	
6.1	Swamps or low lying areas with mound and depression topography. Calcareous clays (Vertosols). Eucalyptus microtheca low open woodland
6.2	Swamps and lake margins. Grey clays (Vertosols). Chenopodium auricomum mid-high sparse shrubland
6.3	Low lying swamps. Grey clays (Vertosols). Mixed annual spp. with Astrebla spp. low grassland
6.3.0	Low lying swamps. Grey clays (Vertosols). Mixed annual spp. with Astrebla spp. low grassland and emergent Acacia cambagei
6.3.v	Low lying swamps. Grey clays (Vertosols). Mixed annual spp. with Astrebla spp. and Cullen cinerea low grassland
6.4	Ephemeral swamps with numerous shallow channels. Grey clays (Vertosols). Chenopodium auricomum mid-high sparse shrubland

INLAND LAKES (continued)	
6.5	Ephemeral swamps. Grey clays (Vertosols). Chenopodium auricomum mid high sparse shrubland
6.6	Extensive ephemeral lakes. Grey clays (Vertosols). Mixed annual spp. low grassland; minor areas with dead Eucalyptus microtheca low open woodland

DRAINAGE SYSTEMS	
5.1	Drainage channels and immediate floodplains. Clay soils (Kandosols). Eucalyptus microtheca and Excoecaria parvifolia low open woodland
5.2	Drainage channels within downs plains. Grey clays (Vertosols). Mixed spp. low sparse forbland with bare areas throughout
5.3	Drainage channels within downs plains. Grey clays (Vertosols). Mixed spp. low sparse forbland with bare areas throughout