

Prepared and produced:
Spatial Data and Mapping, Water Resources NT,
Department of Land Resource Management
Northern Territory of Australia
Drawing No: DLRM2015022

Web: <http://nrmaps.nt.gov.au>
File Ref: Victoria-R_Flood-Warning_Stn-Name

This product and all material forming part of it is copyright belonging to the Northern Territory of Australia. You may use this material for your personal, non-commercial use or use it within your organisation for non-commercial purposes, provided that an appropriate acknowledgement is made and the material is not altered in any way. Subject to the fair dealing provisions of the Copyright Act 1968, you must not make any other use of this product (including copying or reproducing it or part of it in any way) unless you have the written permission of the Northern Territory of Australia to do so.

The Northern Territory of Australia does not warrant that the product or any part of it is correct or complete and will not be liable for any loss damage or injury suffered by any person as a result of its inaccuracy or incompleteness.

kilometres 10 0 10 20 30 40 50 kilometres

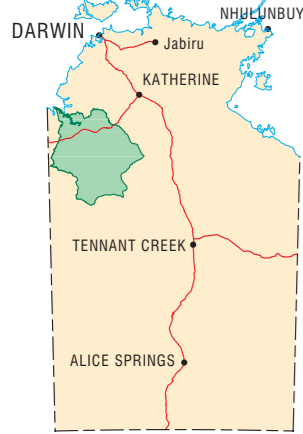
Transverse Mercator Projection, Map Grid of Australia (MGA) Zone 52
Horizontal Datum; Geocentric Datum of Australia (GDA) 1994

CC BY NC SA Attribution-NonCommercial-ShareAlike
This publication is provided under a Creative Commons Attribution 3.0 Australia Licence
<http://creativecommons.org/licenses/by-nc-sa/3.0/au/>

This map was produced on the Geocentric Datum of Australia 1994 (GDA 94)

LOCALITY PLAN

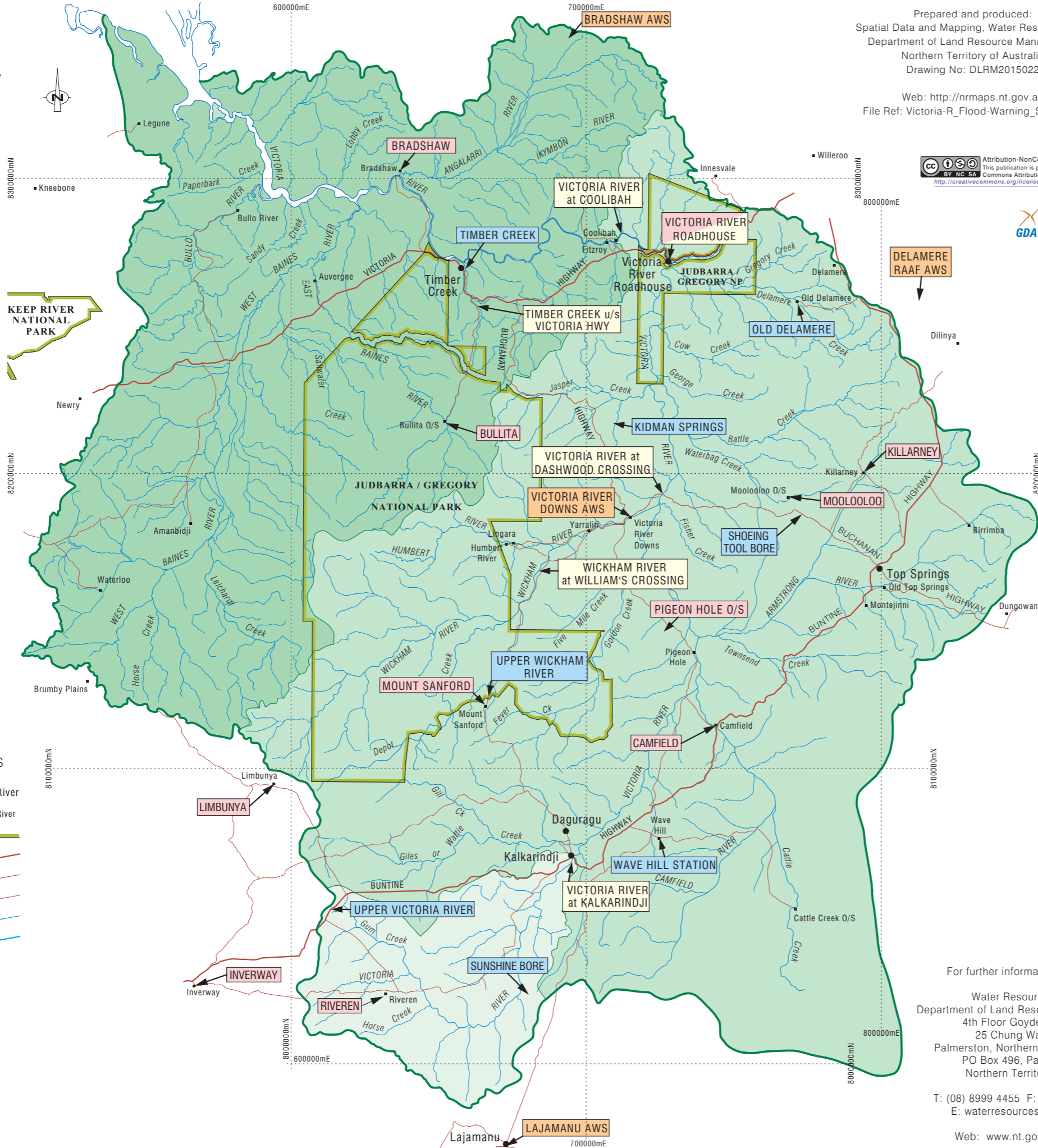
Not to Scale



KEEP RIVER NATIONAL PARK

GENERAL FEATURES

- Town/Community ● Victoria River
- Homestead ■ Humbert River
- National Park █
- Highway —
- Main Road —
- Minor Road —
- River or creek —
- Coastline —



FLOOD WARNING MONITORING STATIONS

BOM: Bureau of Meteorology (Australian Government)

- Rainfall - Daily Read Station
- Rainfall - Automatic Weather Station
- Rainfall - Pluviometer Station

DLRM: Department of Land Resource Management (Northern Territory)

- River Height & Rainfall - Gauging Station

Station Location

- Victoria River Catchment at Kalkarindji
- Victoria River Catchment at Coolibah
- Victoria River Catchment at River mouth

For further information contact:

Water Resources NT,
Department of Land Resource Management
4th Floor Goyder Centre,
25 Chung Wah Tce,
Palmerston, Northern Territory, 0830
PO Box 496, Palmerston,
Northern Territory, 0831

T: (08) 8999 4455 F: (08) 8999 3666
E: waterresources@nt.gov.au

Web: www.nt.gov.au/floods

Northern Territory Government

VICTORIA RIVER FLOOD WARNING MONITORING STATIONS

March 2015