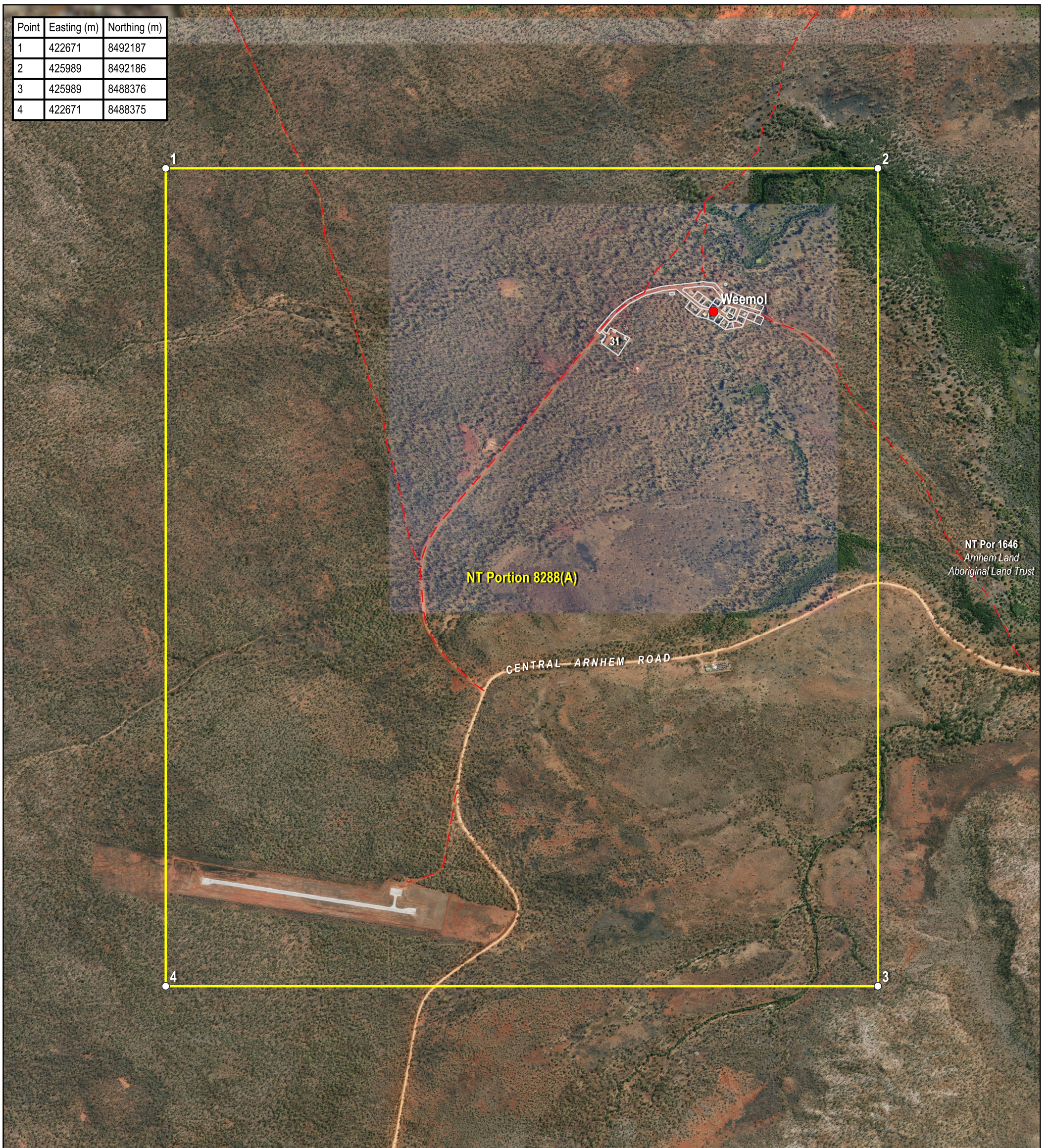
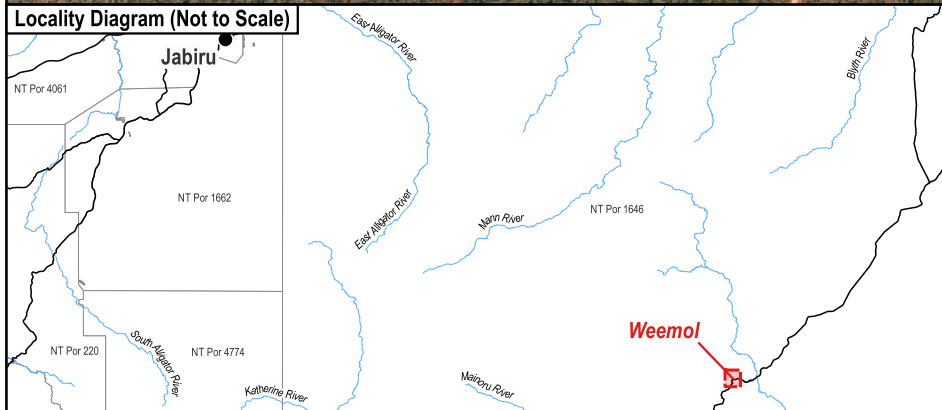


Point	Easting (m)	Northing (m)
1	422671	8492187
2	425989	8492186
3	425989	8488376
4	422671	8488375



Locality Diagram (Not to Scale)



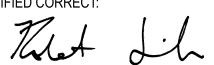
The Interim Alcohol Protected Area is depicted by NT Portion 8288(A).
 Coordinates are based on MGA94 Zone 53 and have been derived from the Northern Territory Integrated Land Information System (ILIS) and are approximate.
 Alternate names: Weemoll, Wemool
 The boundaries of the subject Interim Alcohol Protected Area are declared in accordance with Section 170A of the *Liquor Act 2019*.
 Cadastre Date: 18/08/2023
 Imagery Date: 2021,2017

- Legend**
- Aboriginal Community
 - Track
 - Cadastre
 - Interim Alcohol Protected Area



Interim Alcohol Protected Area Weemol Minor Aboriginal Community



CERTIFIED CORRECT:

 SURVEYOR-GENERAL

1/09/2023
 DATE



S2023/301