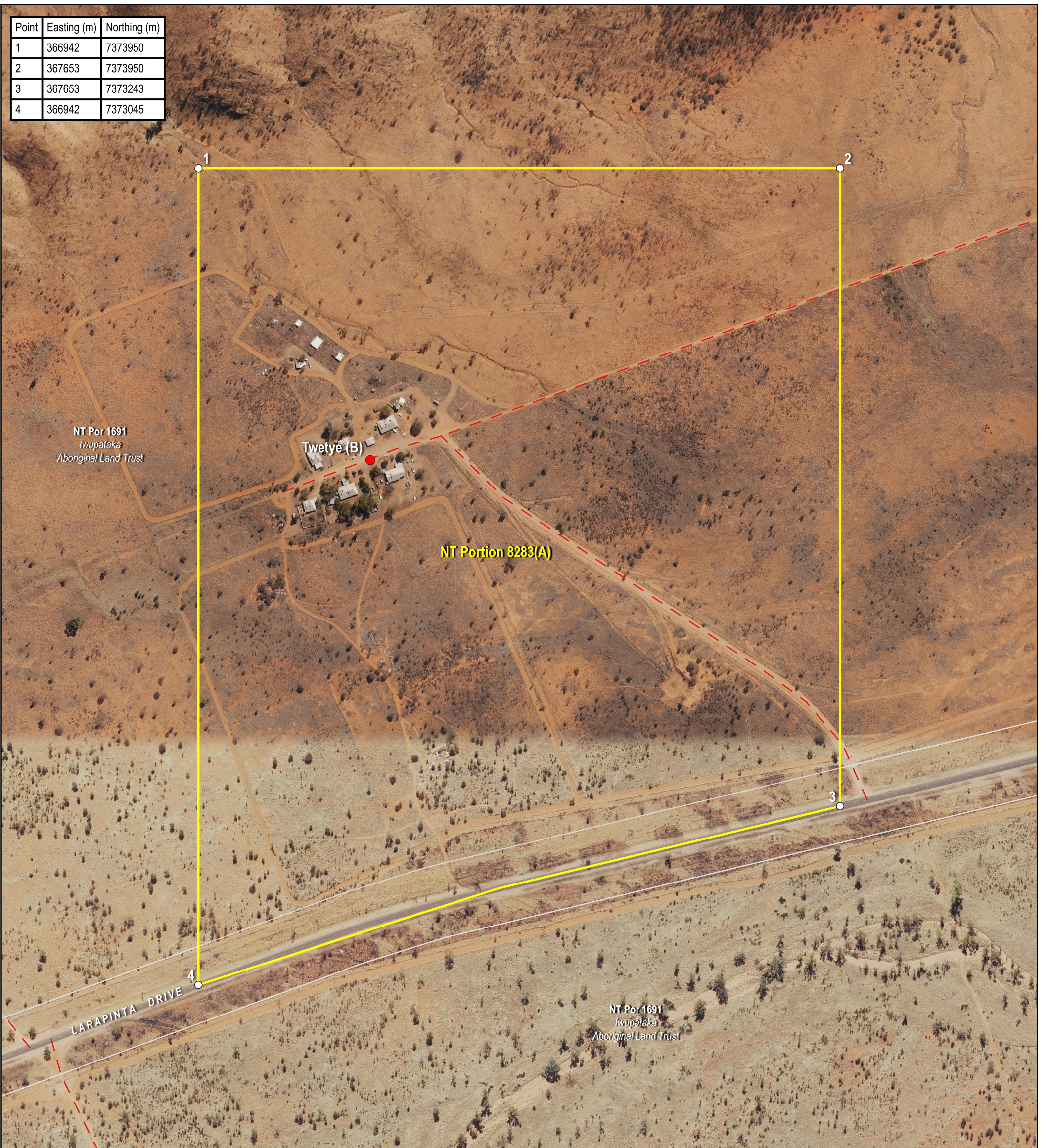
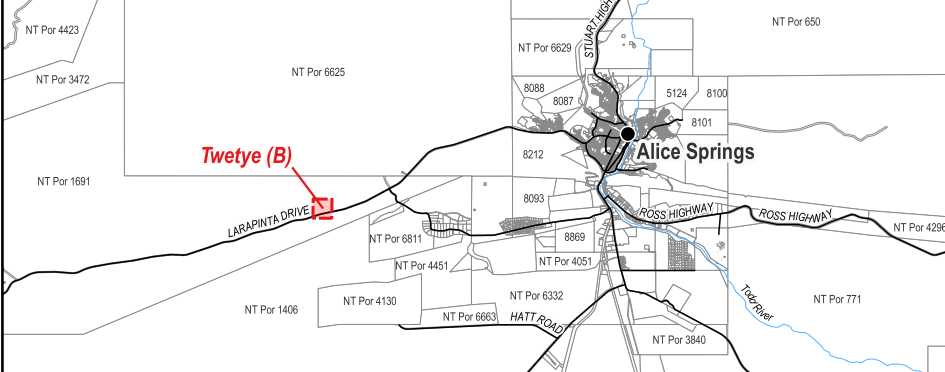


Point	Easting (m)	Northing (m)
1	366942	7373950
2	367653	7373950
3	367653	7373243
4	366942	7373045



Locality Diagram (Not to Scale)



The Interim Alcohol Protected Area is depicted by NT Portion 8283(A). The boundary between Points 3 and 4 generally follows the centreline of Larapinta Drive.

Coordinates are based on MGA94 Zone 53 and have been derived from the Northern Territory Integrated Land Information System (ILIS) and are approximate.

The boundaries of the subject Interim Alcohol Protected Area are declared in accordance with Section 170A of the *Liquor Act 2019*.

Cadastral Date: 11/08/2023  
Imagery Date: 2018,2017

Legend

- Aboriginal Community
- Track
- Cadastre
- Interim Alcohol Protected Area



## Interim Alcohol Protected Area Twetye (B) Family Outstation



CERTIFIED CORRECT:

*D. D. D.*

DELEGATE OF THE SURVEYOR-GENERAL

11/08/2023  
DATE



**S2023/296**