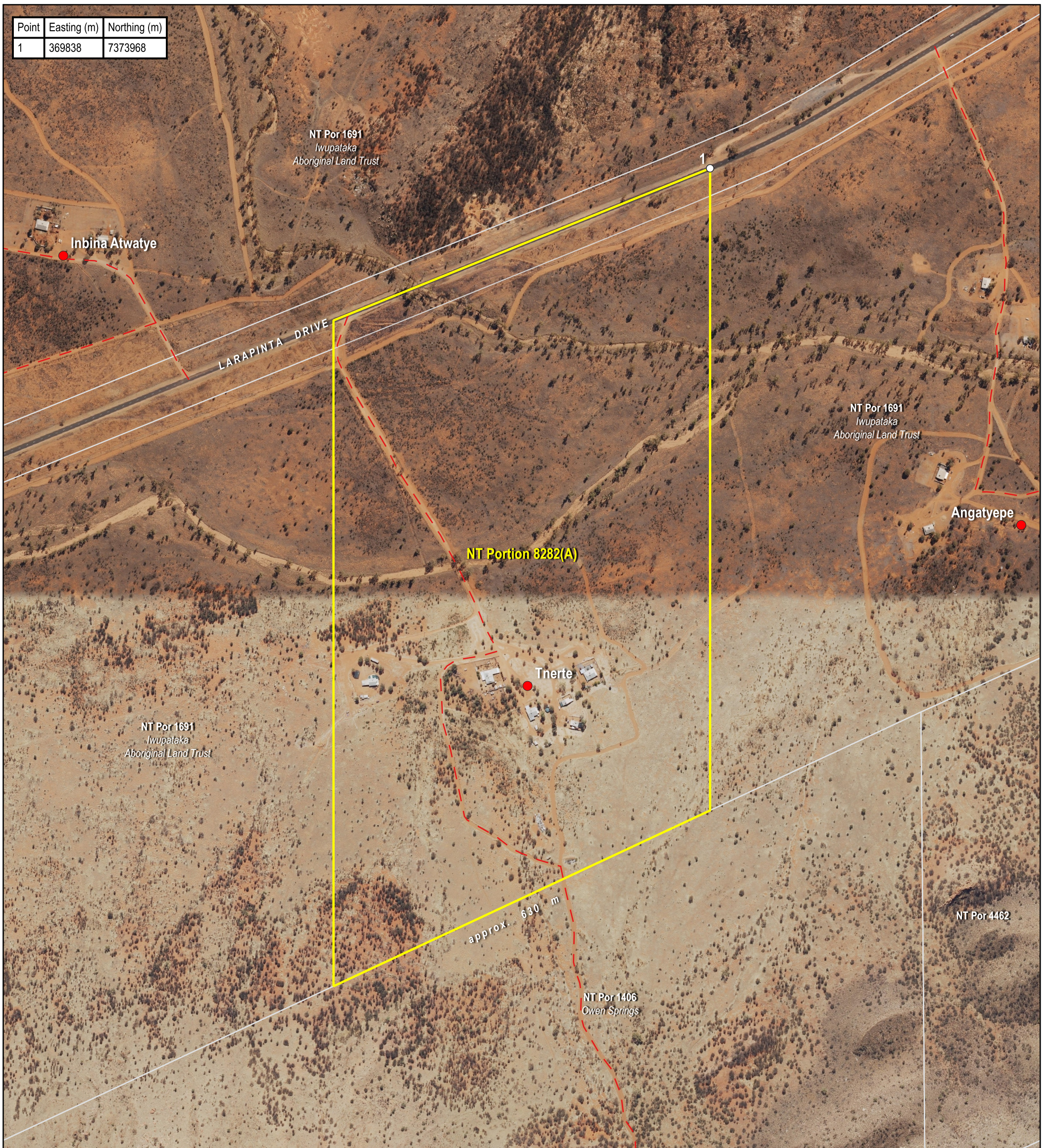
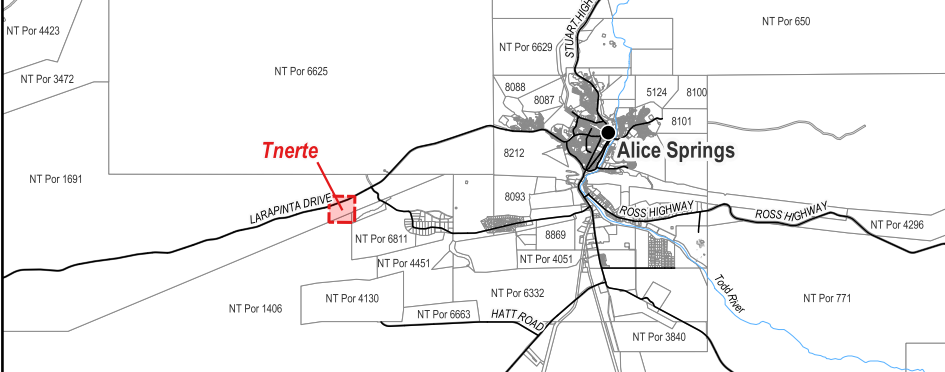


Point	Easting (m)	Northing (m)
1	369838	7373968



Locality Diagram (Not to Scale)



The Interim Alcohol Protected Area is depicted by NT Portion 8282(A).  
 Coordinates are based on MGA94 Zone 53 and have been derived from the Northern Territory Integrated Land Information System (ILIS) and are approximate.  
 The boundaries of the subject Interim Alcohol Protected Area are declared in accordance with Section 170A of the *Liquor Act 2019*.

Cadastral Date: 11/08/2023  
 Imagery Date: 2018,2017

Legend

- Aboriginal Community
- Track
- Cadastre
- Interim Alcohol Protected Area



## Interim Alcohol Protected Area Tnerte Family Outstation



CERTIFIED CORRECT:

*D. Deane*

DELEGATE OF THE SURVEYOR-GENERAL

11/08/2023  
DATE



S2023/295