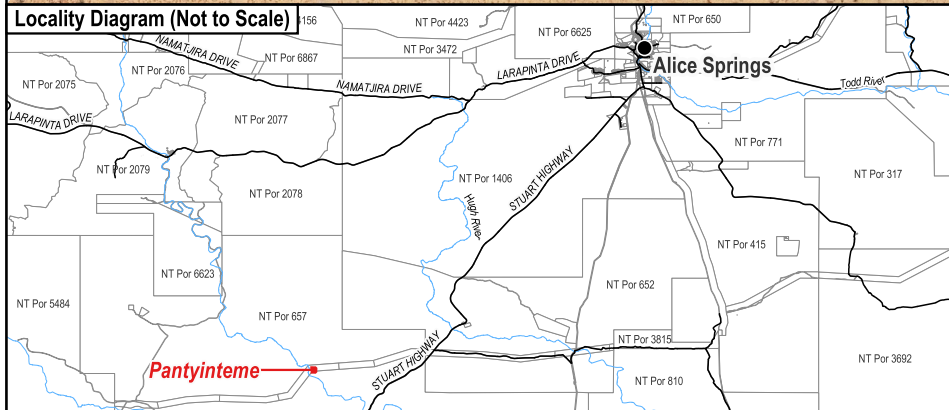
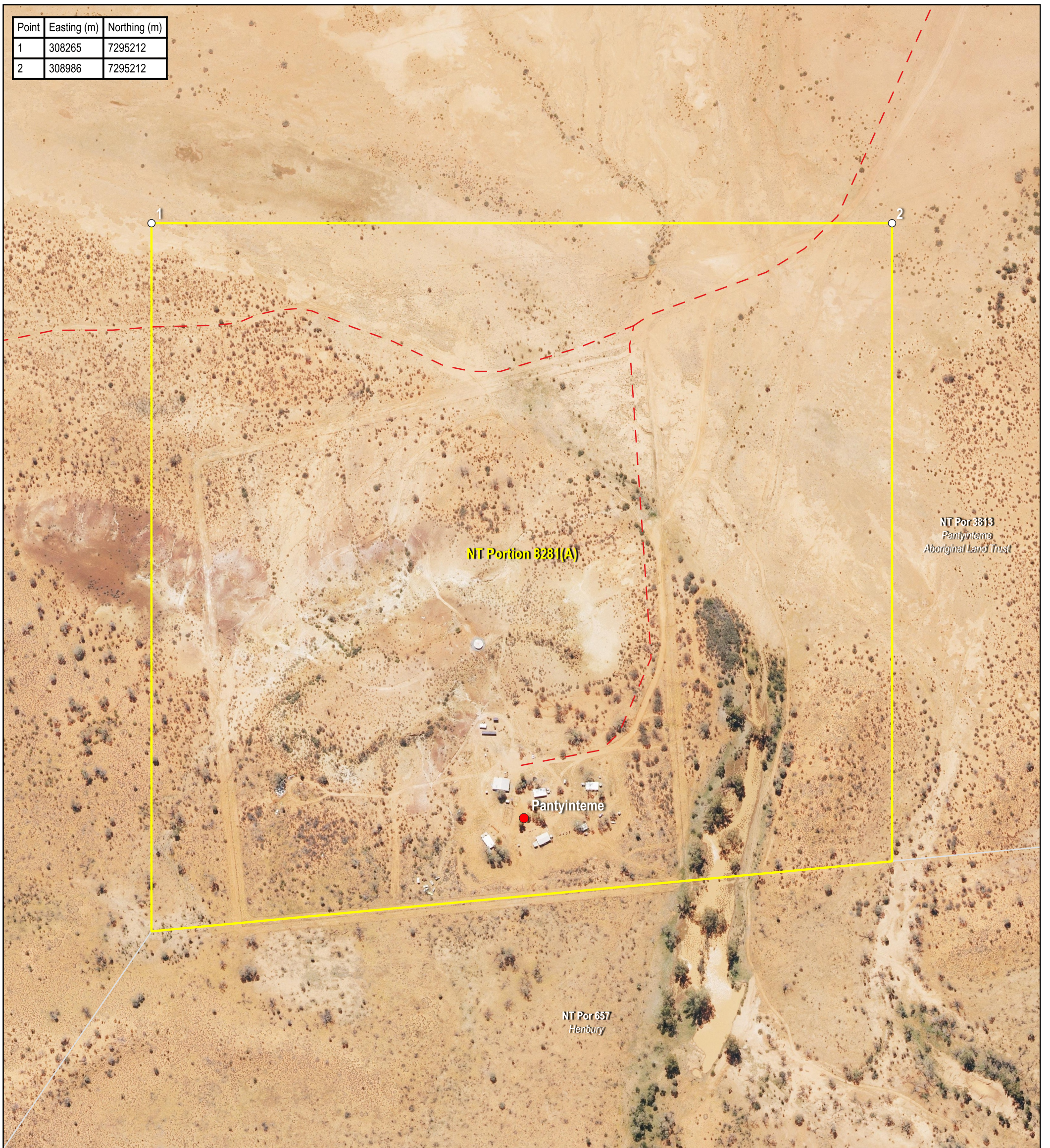


Point	Easting (m)	Northing (m)
1	308265	7295212
2	308986	7295212



The Interim Alcohol Protected Area is depicted by NT Portion 8281(A).
 Coordinates are based on MGA94 Zone 53 and have been derived from the Northern Territory Integrated Land Information System (ILIS) and are approximate.
 Alternate names: Cave Hole
 The boundaries of the subject Interim Alcohol Protected Area are declared in accordance with Section 170A of the *Liquor Act 2019*.
 Cadastre Date: 11/08/2023
 Imagery Date: 2016

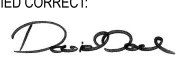
Legend

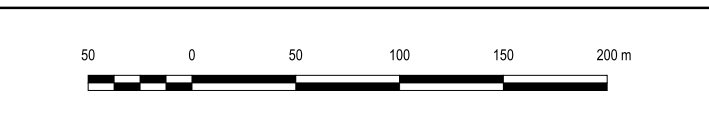
- Aboriginal Community
- - - Track
- Cadastre
- Interim Alcohol Protected Area



Interim Alcohol Protected Area Pantyinteme Family Outstation



CERTIFIED CORRECT:

 DELEGATE OF THE SURVEYOR-GENERAL
 11/08/2023
 DATE



S2023/294