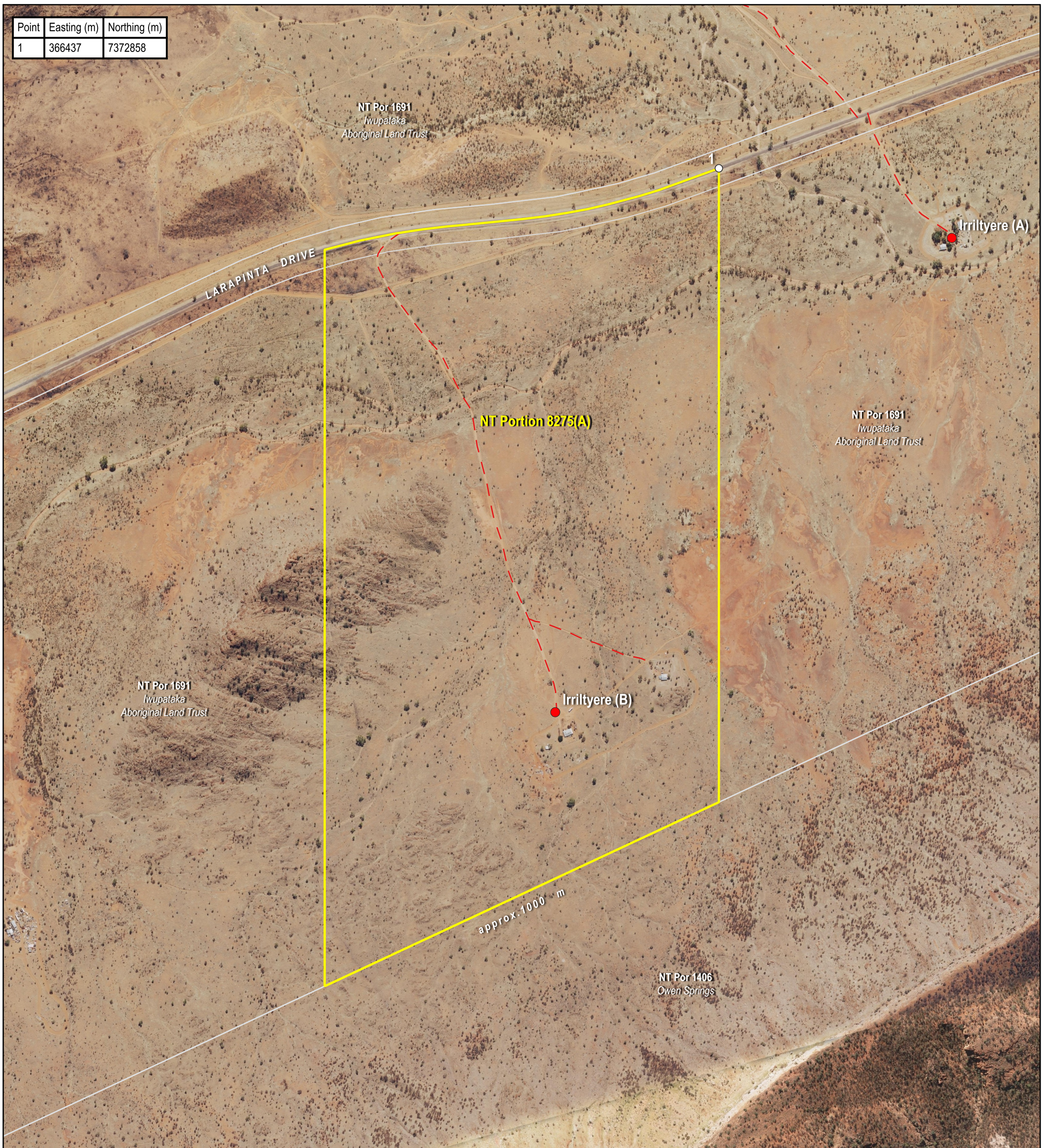
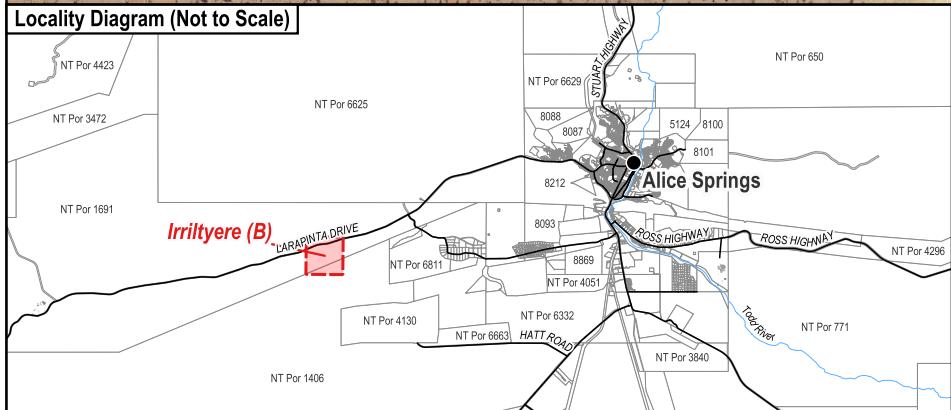


Point	Easting (m)	Northing (m)
1	366437	7372858



Locality Diagram (Not to Scale)



The Interim Alcohol Protected Area is depicted by NT Portion 8275(A).
 Coordinates are based on MGA94 Zone 53 and have been derived from the Northern Territory Integrated Land Information System (ILIS) and are approximate.
 The boundaries of the subject Interim Alcohol Protected Area are declared in accordance with Section 170A of the *Liquor Act 2019*.
 Cadastre Date: 11/08/2023
 Imagery Date: 2017

- Legend**
- Aboriginal Community
 - Track
 - Cadastre
 - Interim Alcohol Protected Area

Interim Alcohol Protected Area Irriltyere (B) Family Outstation

