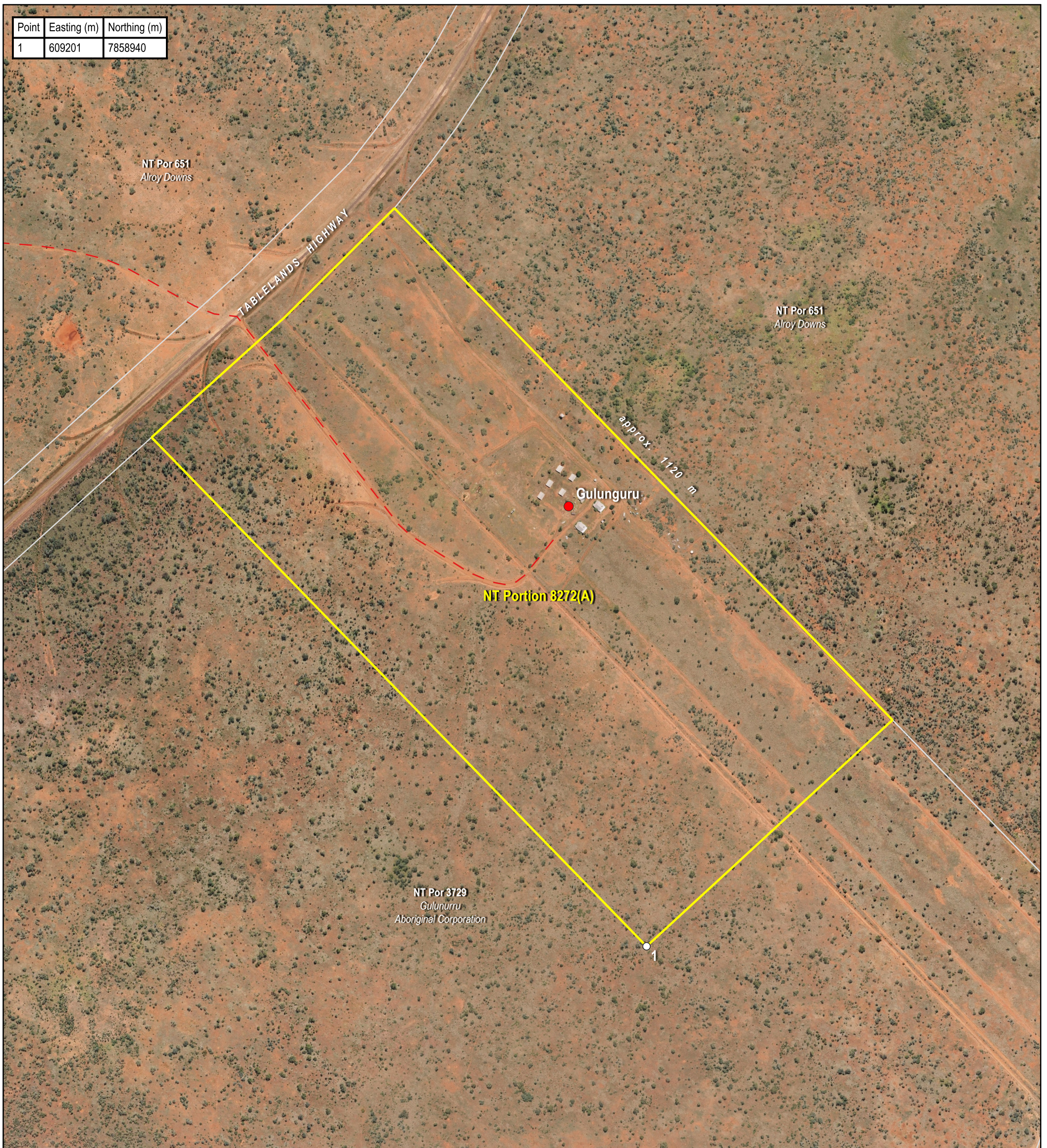
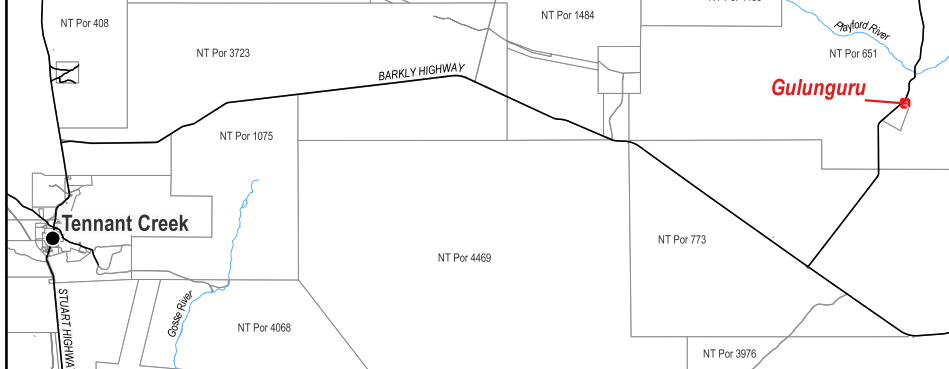


Point	Easting (m)	Northing (m)
1	609201	7858940



Locality Diagram (Not to Scale)



The Interim Alcohol Protected Area is depicted by NT Portion 8272(A).  
 Coordinates are based on MGA94 Zone 53 and have been derived from the Northern Territory Integrated Land Information System (ILIS) and are approximate.  
 Alternate names: Alroy Downs, Gulunuru, Gulunguru  
 The boundaries of the subject Interim Alcohol Protected Area are declared in accordance with Section 170A of the *Liquor Act 2019*.  
 Cadastre Date: 11/08/2023  
 Imagery Date: 2016

- Legend**
- Aboriginal Community
  - Track
  - Cadastre
  - Interim Alcohol Protected Area



## Interim Alcohol Protected Area Gulunguru Family Outstation



CERTIFIED CORRECT:

*D. Deane*

DELEGATE OF THE SURVEYOR-GENERAL

11/08/2023  
DATE



S2023/285