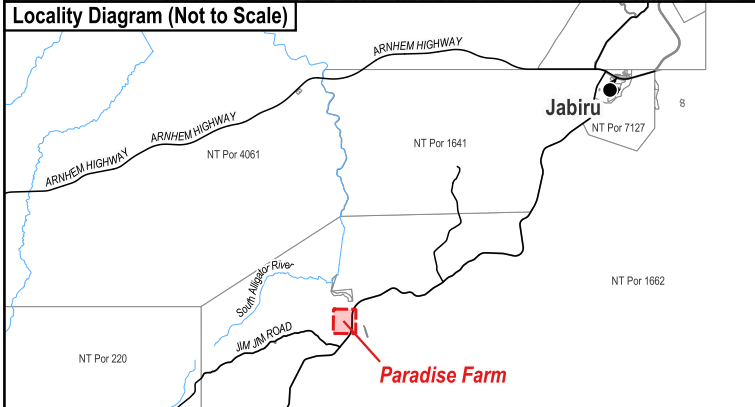
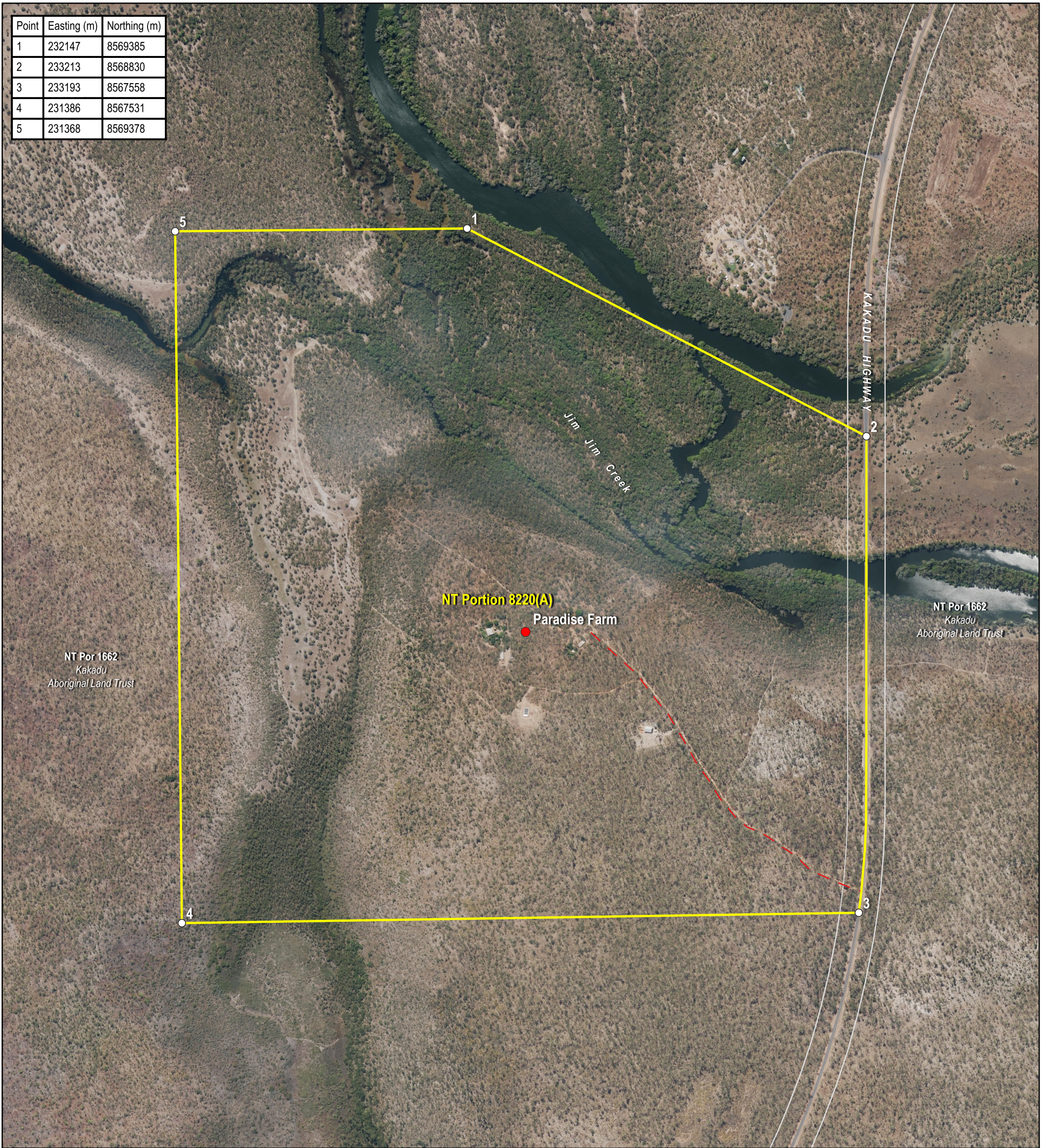


Point	Easting (m)	Northing (m)
1	232147	8569385
2	233213	8568830
3	233193	8567558
4	231386	8567531
5	231368	8569378



The Interim Alcohol Protected Area is depicted by NT Portion 8220(A). The boundary between Points 2 and 3 generally follows the centreline of the Kakadu Highway.

Coordinates are based on MGA94 Zone 53 and have been derived from the Northern Territory Integrated Land Information System (ILIS) and are approximate.

Alternate names: Alderson, Alderson Station, Jim Jim Park HQ, Jim Jim Ranger Station

The boundaries of the subject Interim Alcohol Protected Area are declared in accordance with Section 170A of the *Liquor Act 2019*.

Cadastral Date: 15/08/2023
Imagery Date: 2017

Legend

- Aboriginal Community
- Track
- Cadastre
- Interim Alcohol Protected Area



Interim Alcohol Protected Area Paradise Farm Family Outstation

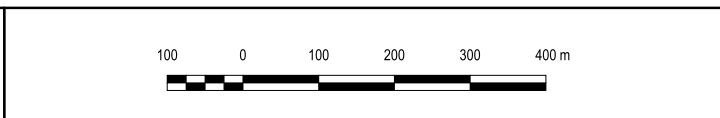


CERTIFIED CORRECT:

[Signature]

15/08/2023
DATE

DELEGATE OF THE SURVEYOR-GENERAL



S2023/201