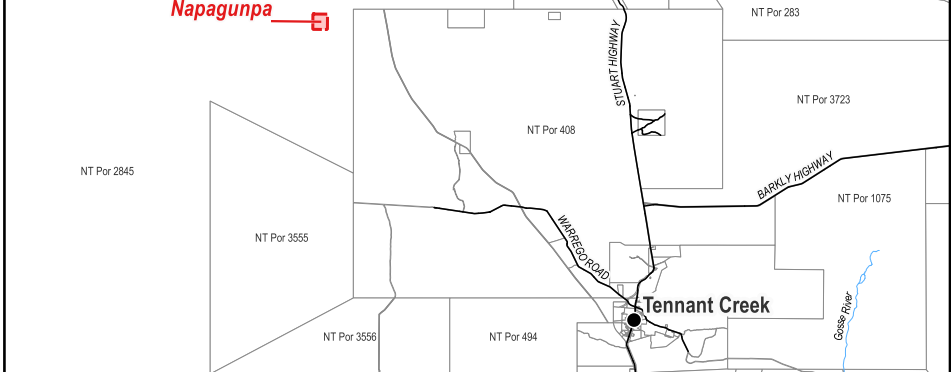


Locality Diagram (Not to Scale)



The Interim Alcohol Protected Area is centred around a coordinate (354678m E and 7887063m N) based on MGA94 Zone 53 and has a radius of 1000m.

Coordinates have been derived from the Northern Territory Integrated Land Information System (ILIS) and are approximate.

Alternate names: Ngapagunpa

The boundaries of the subject Interim Alcohol Protected Area are declared in accordance with Section 170A of the *Liquor Act 2019*.

Cadastral Date: 18/07/2023
Imagery Date: 2011

Legend

- Aboriginal Community
- Track
- Cadastre
- Interim Alcohol Protected Area



NORTHERN TERRITORY GOVERNMENT
Department of Infrastructure, Planning and Logistics

Interim Alcohol Protected Area

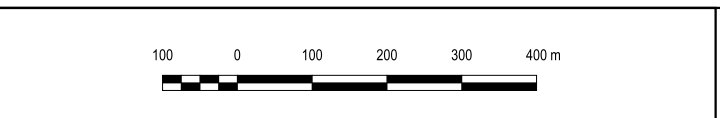
Napagunpa Family Outstation




CERTIFIED CORRECT:

Robert Lih
SURVEYOR-GENERAL

19/07/2023
DATE



S2023/191