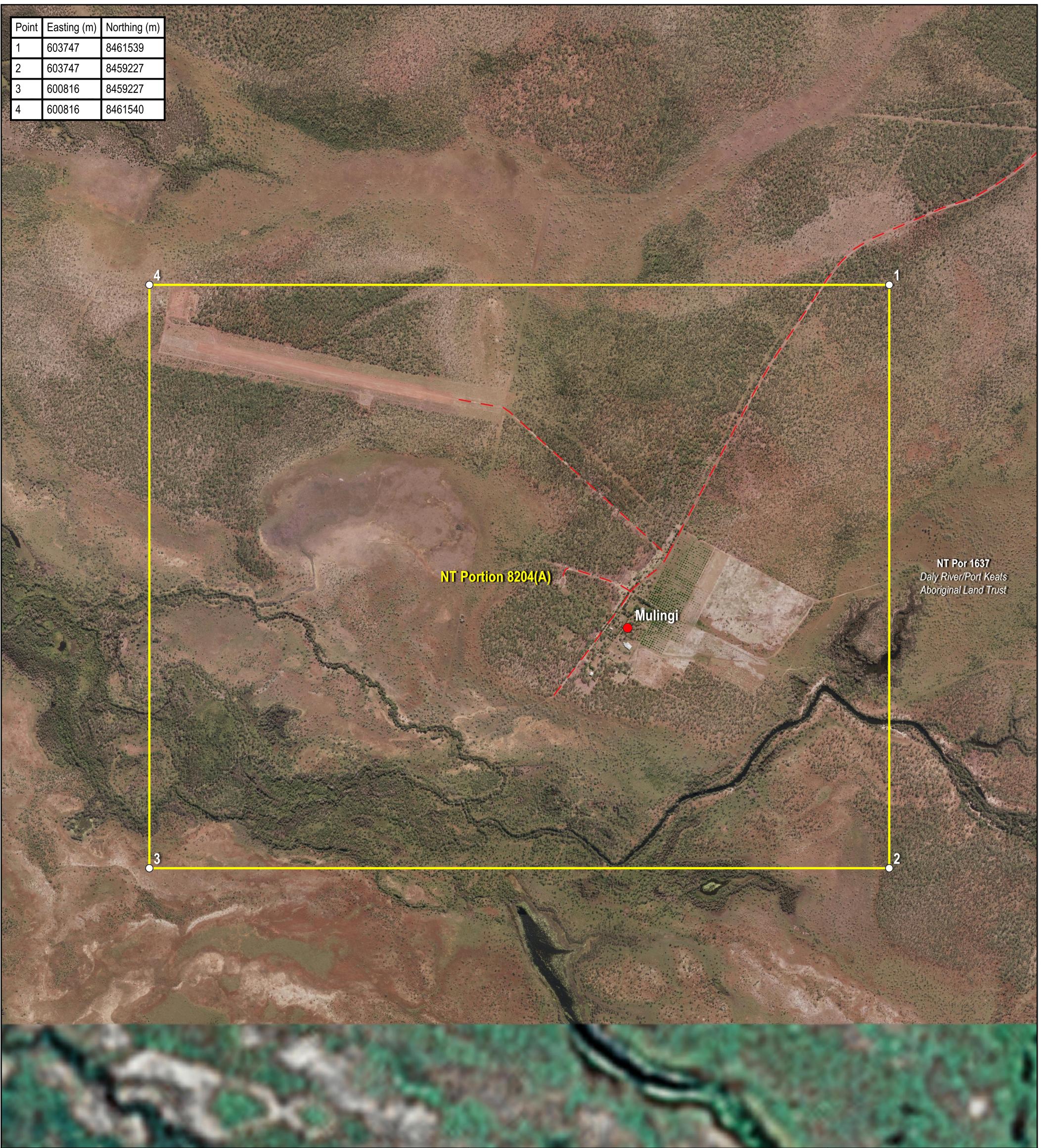
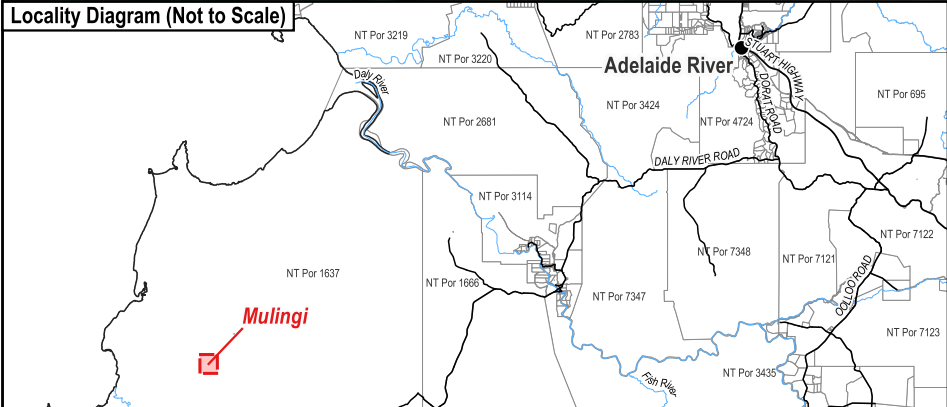


Point	Easting (m)	Northing (m)
1	603747	8461539
2	603747	8459227
3	600816	8459227
4	600816	8461540



Locality Diagram (Not to Scale)



The Interim Alcohol Protected Area is depicted by NT Portion 8204(A).
 Coordinates are based on MGA94 Zone 52 and have been derived from the Northern Territory Integrated Land Information System (ILIS) and are approximate.
 Alternate names: Mt Greenwood, Mulingi
 The boundaries of the subject Interim Alcohol Protected Area are declared in accordance with Section 170A of the *Liquor Act 2019*.
 Cadastre Date: 15/08/2023
 Imagery Date: 2022

- Legend**
- Aboriginal Community
 - Track
 - Cadastre
 - Interim Alcohol Protected Area

Interim Alcohol Protected Area Mulingi Family Outstation

