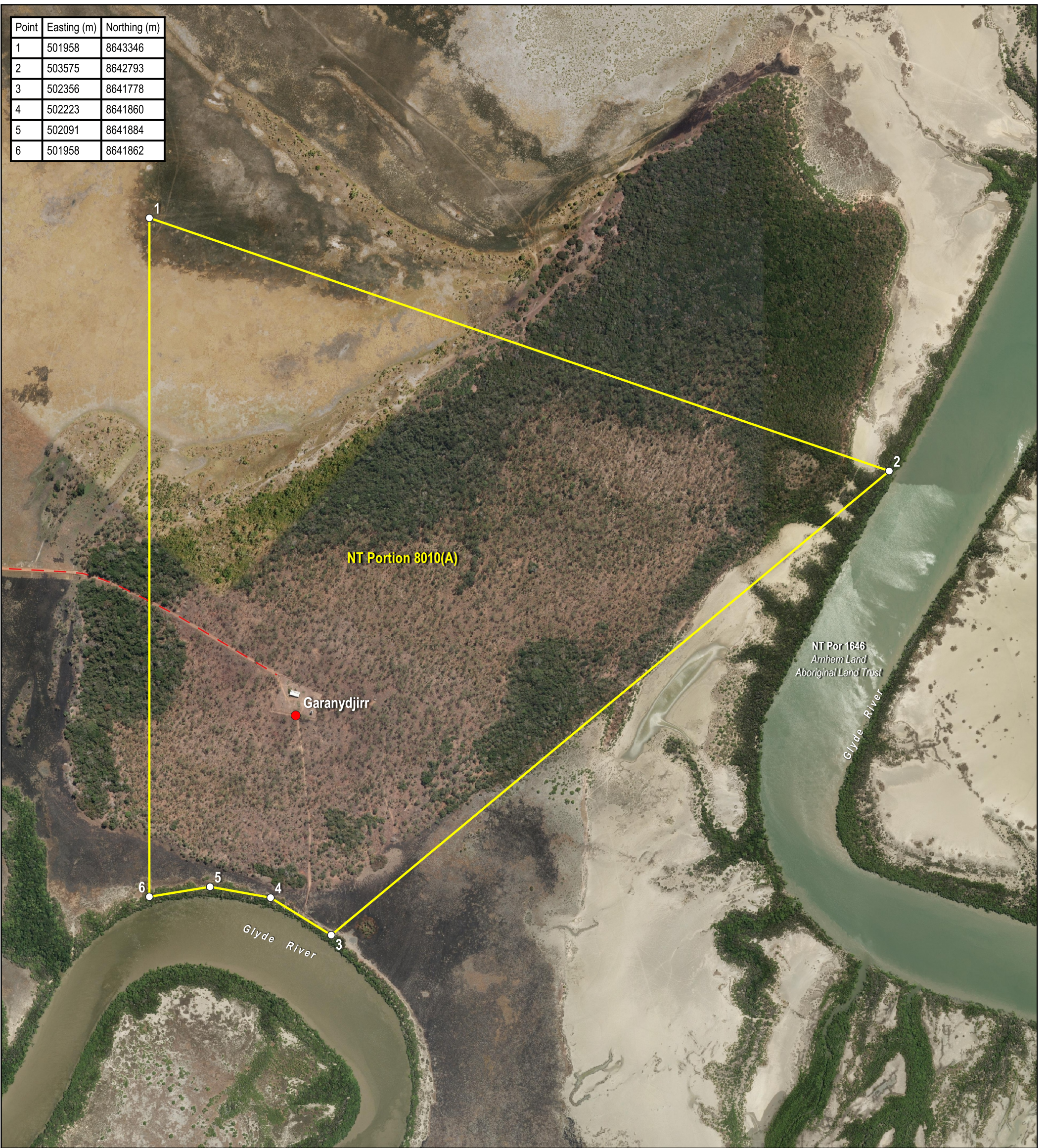
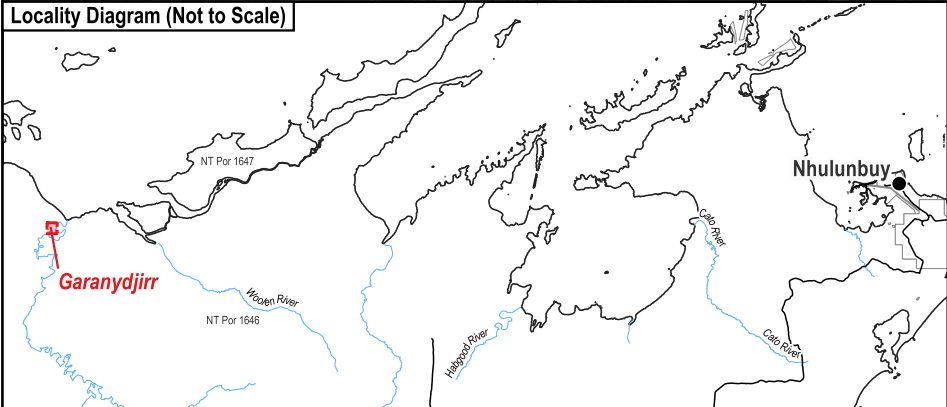


Point	Easting (m)	Northing (m)
1	501958	8643346
2	503575	8642793
3	502356	8641778
4	502223	8641860
5	502091	8641884
6	501958	8641862



Locality Diagram (Not to Scale)



The Interim Alcohol Protected Area is depicted by NT Portion 8010(A).
 Coordinates are based on MGA94 Zone 53 and have been derived from the Northern Territory Integrated Land Information System (ILIS) and are approximate.
 The boundaries of the subject Interim Alcohol Protected Area are declared in accordance with Section 170A of the *Liquor Act 2019*.
 Cadastre Date: 18/08/2023
 Imagery Date: 2016

- Legend**
- Aboriginal Community
 - Track
 - Cadastre
 - Interim Alcohol Protected Area



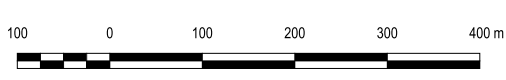
Interim Alcohol Protected Area Garanydjirr Family Outstation



CERTIFIED CORRECT:

 SURVEYOR-GENERAL

1/09/2023
 DATE



S2023/133