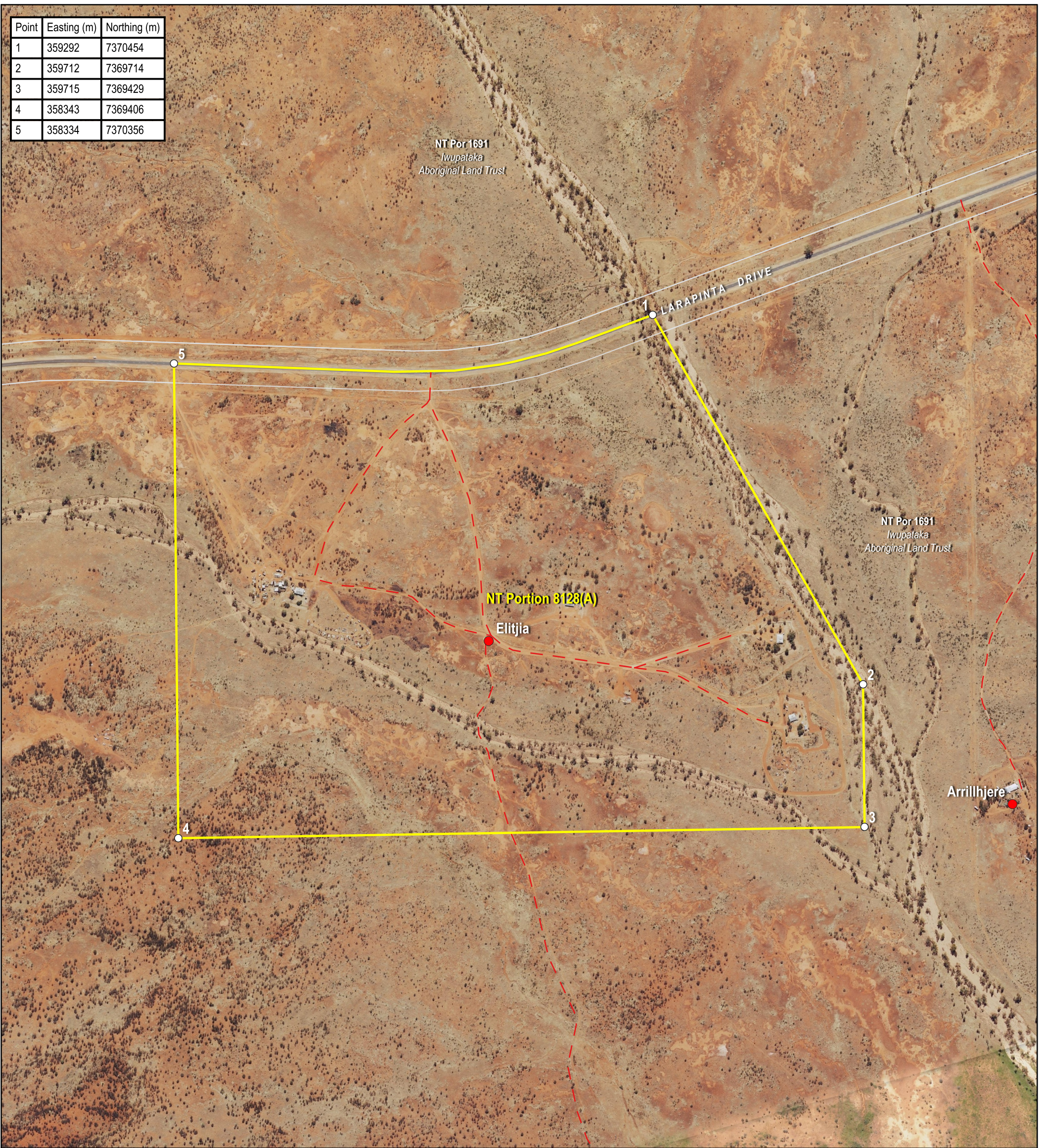
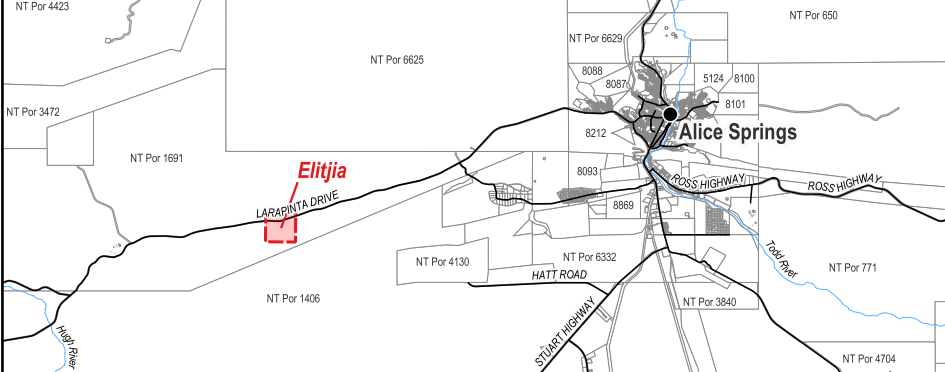


Point	Easting (m)	Northing (m)
1	359292	7370454
2	359712	7369714
3	359715	7369429
4	358343	7369406
5	358334	7370356



Locality Diagram (Not to Scale)



The Interim Alcohol Protected Area is depicted by NT Portion 8128(A). The boundary between Points 5 and 1 generally follows the centreline of Larapinta Drive.

The boundaries of the subject Interim Alcohol Protected Area are declared in accordance with Section 170A of the *Liquor Act 2019*.

Cadastral Date: 15/08/2023
Imagery Date: 2017

Legend

- Aboriginal Community
- Track
- Cadastre
- Interim Alcohol Protected Area



Interim Alcohol Protected Area Elitjia Family Outstation



CERTIFIED CORRECT:

D. Deane

DELEGATE OF THE SURVEYOR-GENERAL

15/08/2023
DATE



S2023/105