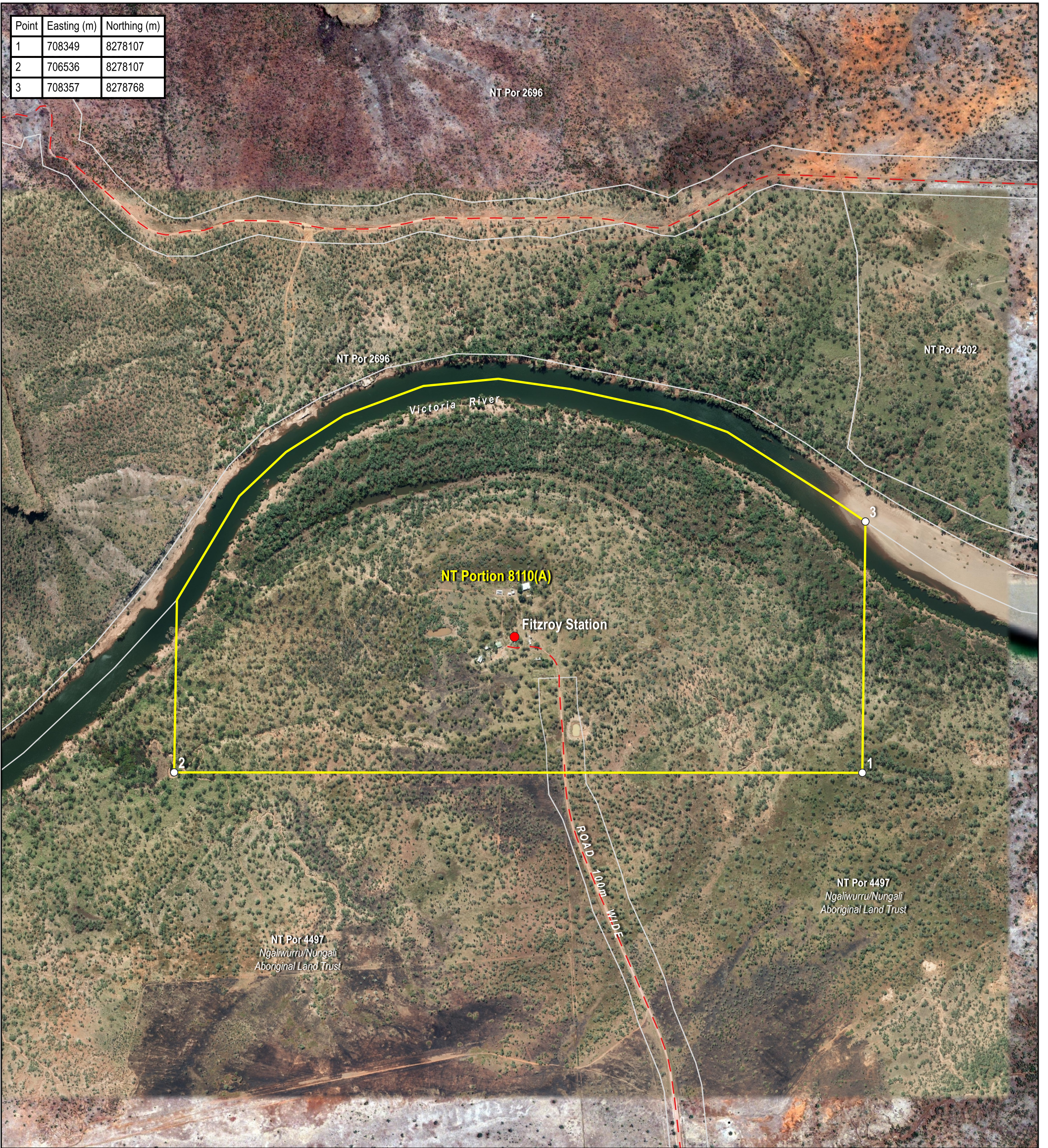
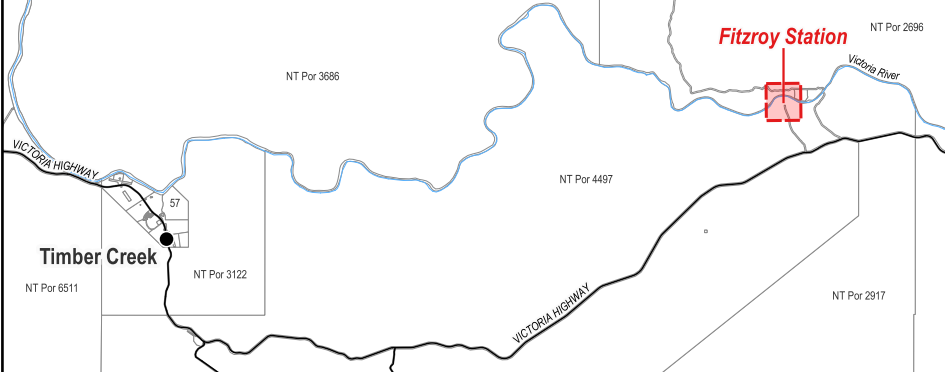


Point	Easting (m)	Northing (m)
1	708349	8278107
2	706536	8278107
3	708357	8278768



Locality Diagram (Not to Scale)



The Interim Alcohol Protected Area is depicted by NT Portion 8110(A).
 Coordinates are based on MGA94 Zone 52 and have been derived from the Northern Territory Integrated Land Information System (ILIS) and are approximate.
 The boundaries of the subject Interim Alcohol Protected Area are declared in accordance with Section 170A of the *Liquor Act 2019*.
 Cadastre Date: 15/08/2023
 Imagery Date: 2011

- Legend**
- Aboriginal Community
 - Track
 - Cadastre
 - Interim Alcohol Protected Area



Interim Alcohol Protected Area Fitzroy Station Family Outstation



CERTIFIED CORRECT:

 15/08/2023
 DATE



S2023/087