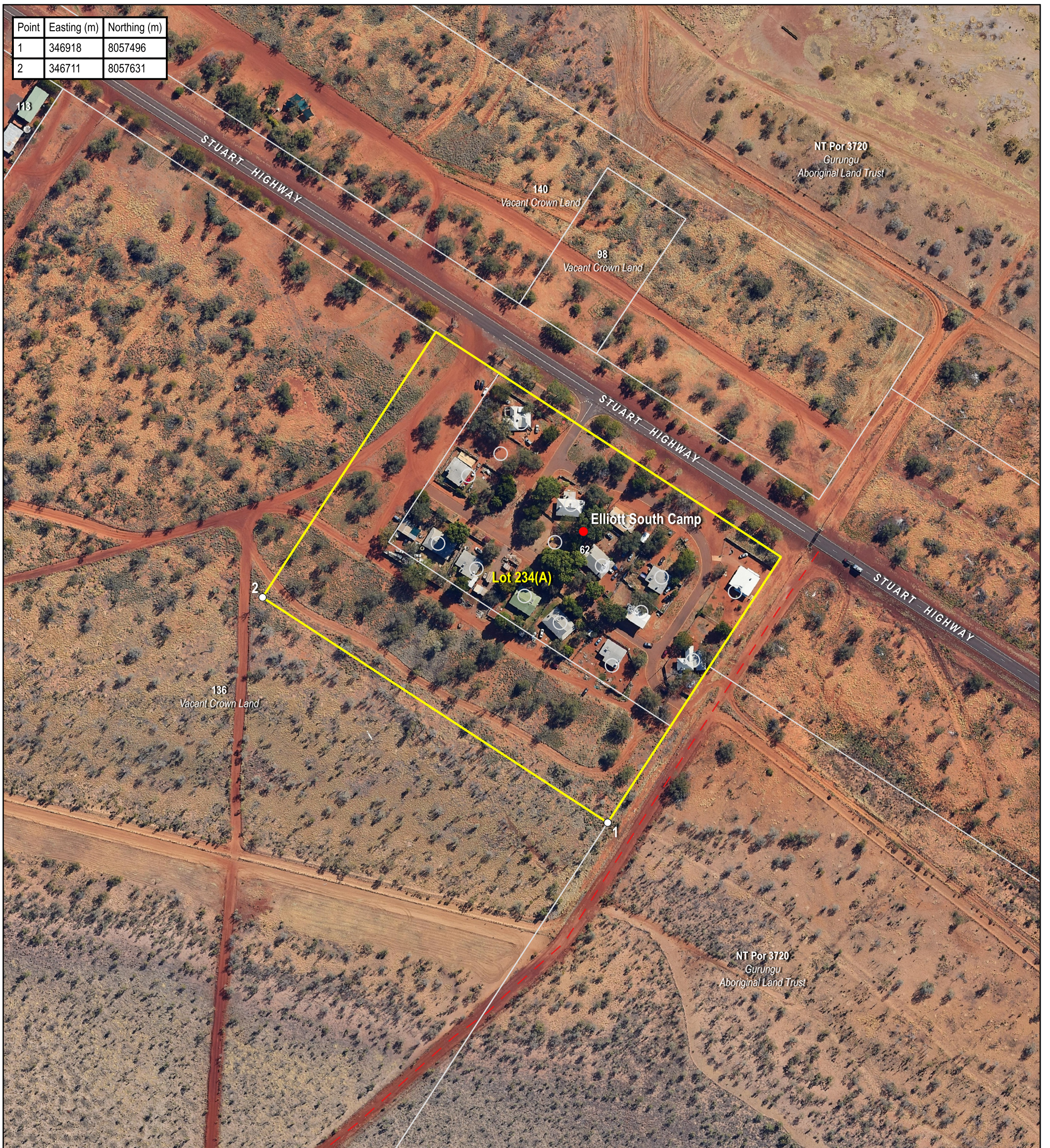
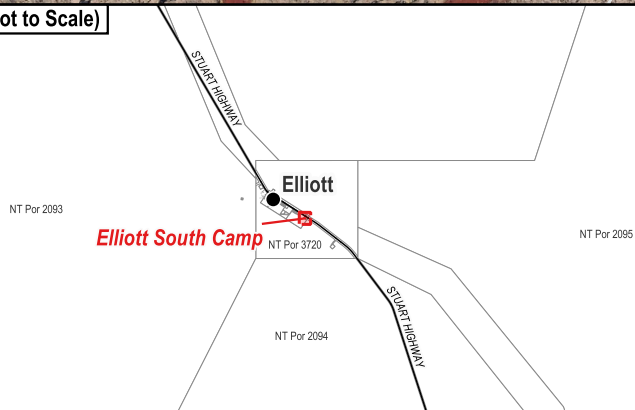


Point	Easting (m)	Northing (m)
1	346918	8057496
2	346711	8057631



Locality Diagram (Not to Scale)



The Interim Alcohol Protected Area is depicted by Lot 234(A).

Coordinates are based on MGA94 Zone 53 and have been derived from the Northern Territory Integrated Land Information System (ILIS) and are approximate.

Alternate names: South Camp, Wilyugh, Wilyugoo, Wilyugu

The boundaries of the subject Interim Alcohol Protected Area are declared in accordance with Section 170A of the *Liquor Act 2019*.

Cadastral Date: 15/08/2023
Imagery Date: 2022

Legend

- Aboriginal Community
- Track
- Cadastre
- Interim Alcohol Protected Area



Interim Alcohol Protected Area Elliott South Camp Town Camp



CERTIFIED CORRECT:

Dee Dee

DELEGATE OF THE SURVEYOR-GENERAL

15/08/2023
DATE



S2023/082