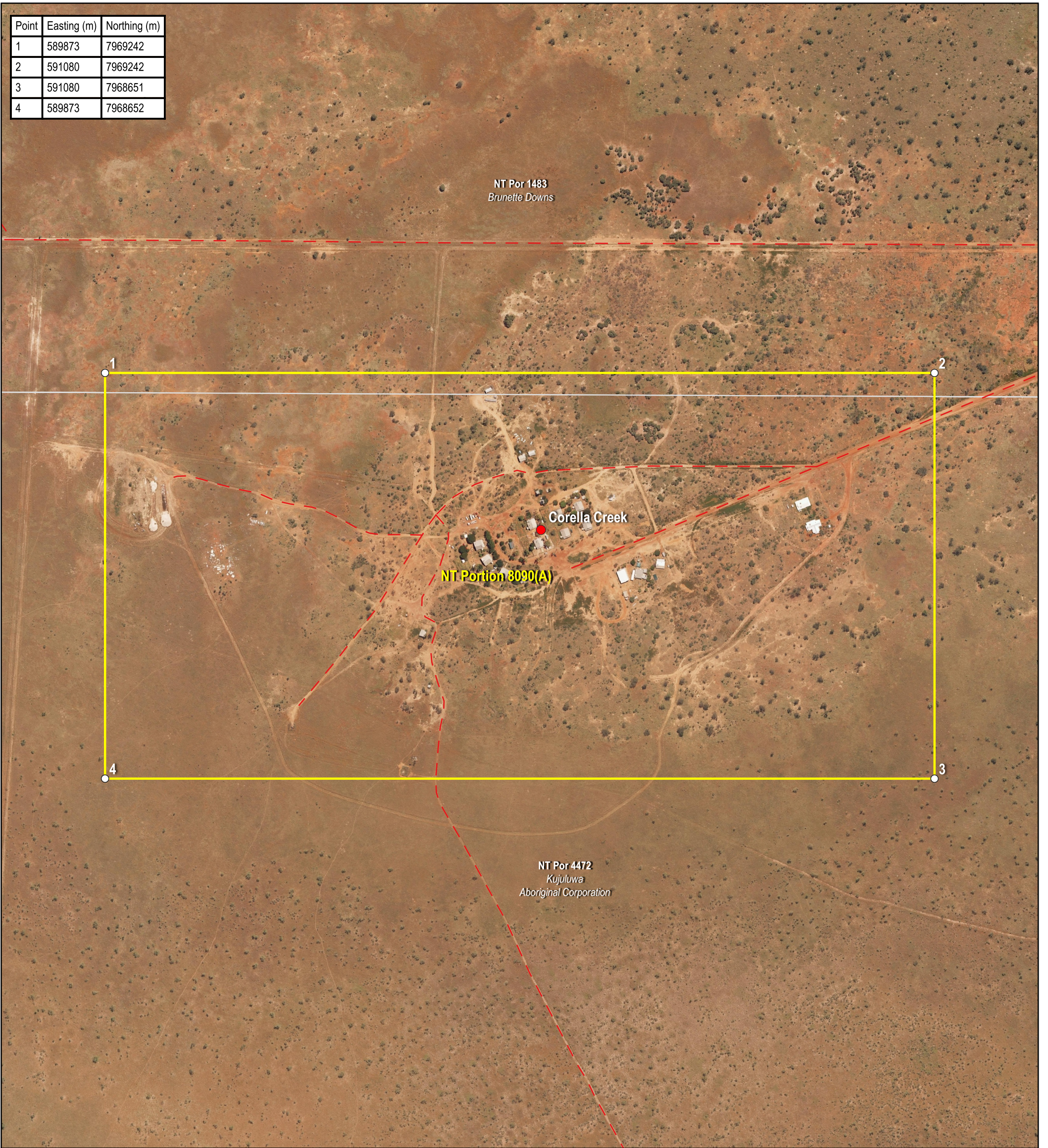
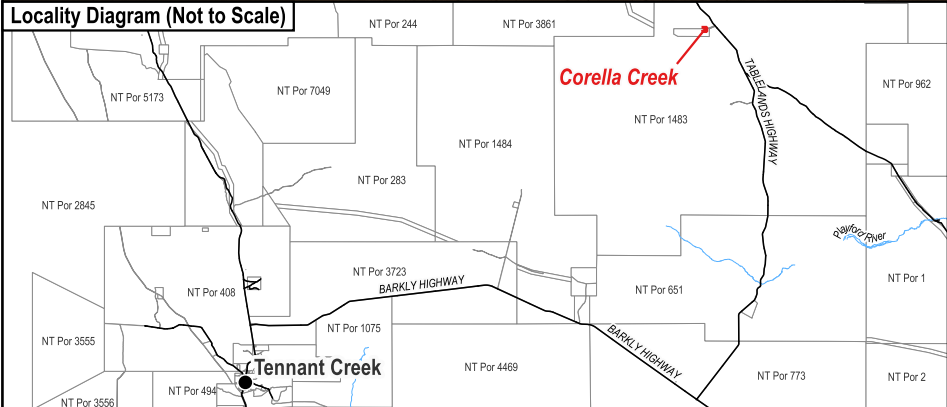


Point	Easting (m)	Northing (m)
1	589873	7969242
2	591080	7969242
3	591080	7968651
4	589873	7968652



Locality Diagram (Not to Scale)



The Interim Alcohol Protected Area is depicted by NT Portion 8090(A).
 Coordinates are based on MGA94 Zone 53 and have been derived from the Northern Territory Integrated Land Information System (ILIS) and are approximate.
 The boundaries of the subject Interim Alcohol Protected Area are declared in accordance with Section 170A of the *Liquor Act 2019*.

Cadastral Date: 15/08/2023
 Imagery Date: 2016

Legend

- Aboriginal Community
- Track
- Cadastre
- Interim Alcohol Protected Area

Interim Alcohol Protected Area Corella Creek Family Outstation

CERTIFIED CORRECT:



DELEGATE OF THE SURVEYOR-GENERAL

15/08/2023
 DATE



S2023/066