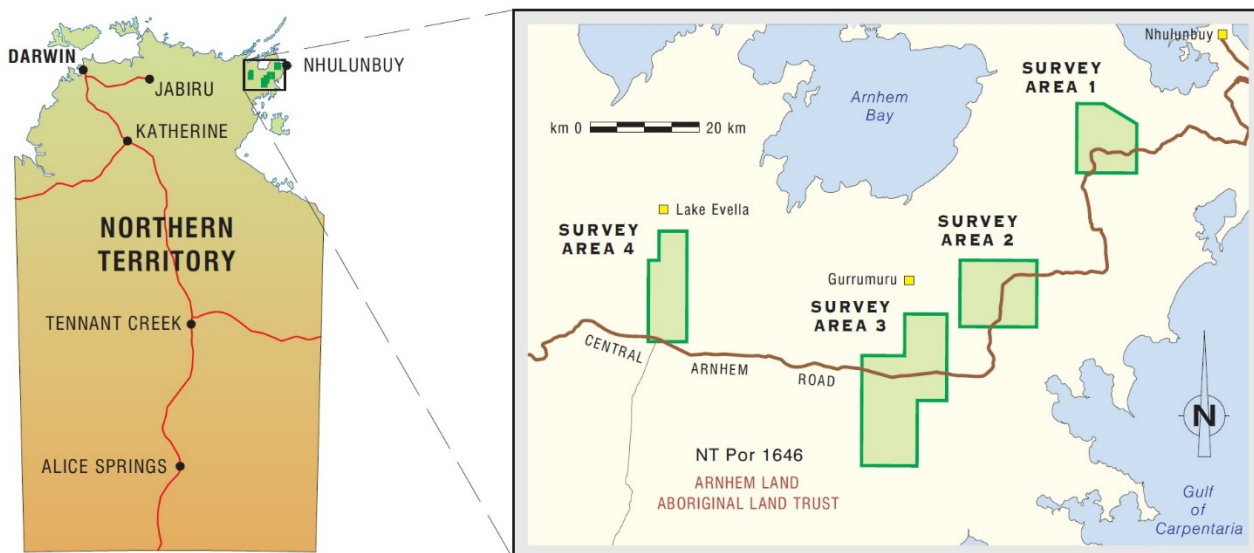


## Soil and Land Suitability Assessment for Irrigated Agriculture in the East Arnhem Region

Spatial data details for this survey are described in the [Metadata](#) record.

### MAP LOCALITY



### List of map products

Map No.	Map Description	Click to download	File size (MB)	
1,12,23	Land Resources	These 33 maps are combined into a single PDF. <a href="#">Map product</a>	19.5	
2,13,24	General Land Capability			
Land Suitability for a range of crop types:				
Map No.	Crop description			Crop Group
3-6,14-17,25-28	Irrigated tree crops			1,2,3,4
7-9,18-20,29-31	Irrigated row crops			5,6,7
10,21,32	Irrigated root crops			8
11,22,33	Irrigated forestry			10
Interactive PDF map displaying layers with land unit information and land suitability classes		<a href="#">Map product</a>	23	

For further information, please contact

**Department of Environment and Natural Resources**  
**Director, Land Assessment, Rangelands Division**

Level 3, Goyder Centre, 25 Chung Wah Tce, Palmerston, Northern Territory

Email: [rangelands@nt.gov.au](mailto:rangelands@nt.gov.au)

Web: <https://nt.gov.au/environment/soil-land-vegetation>

