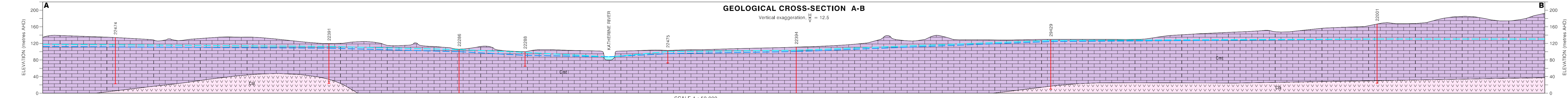


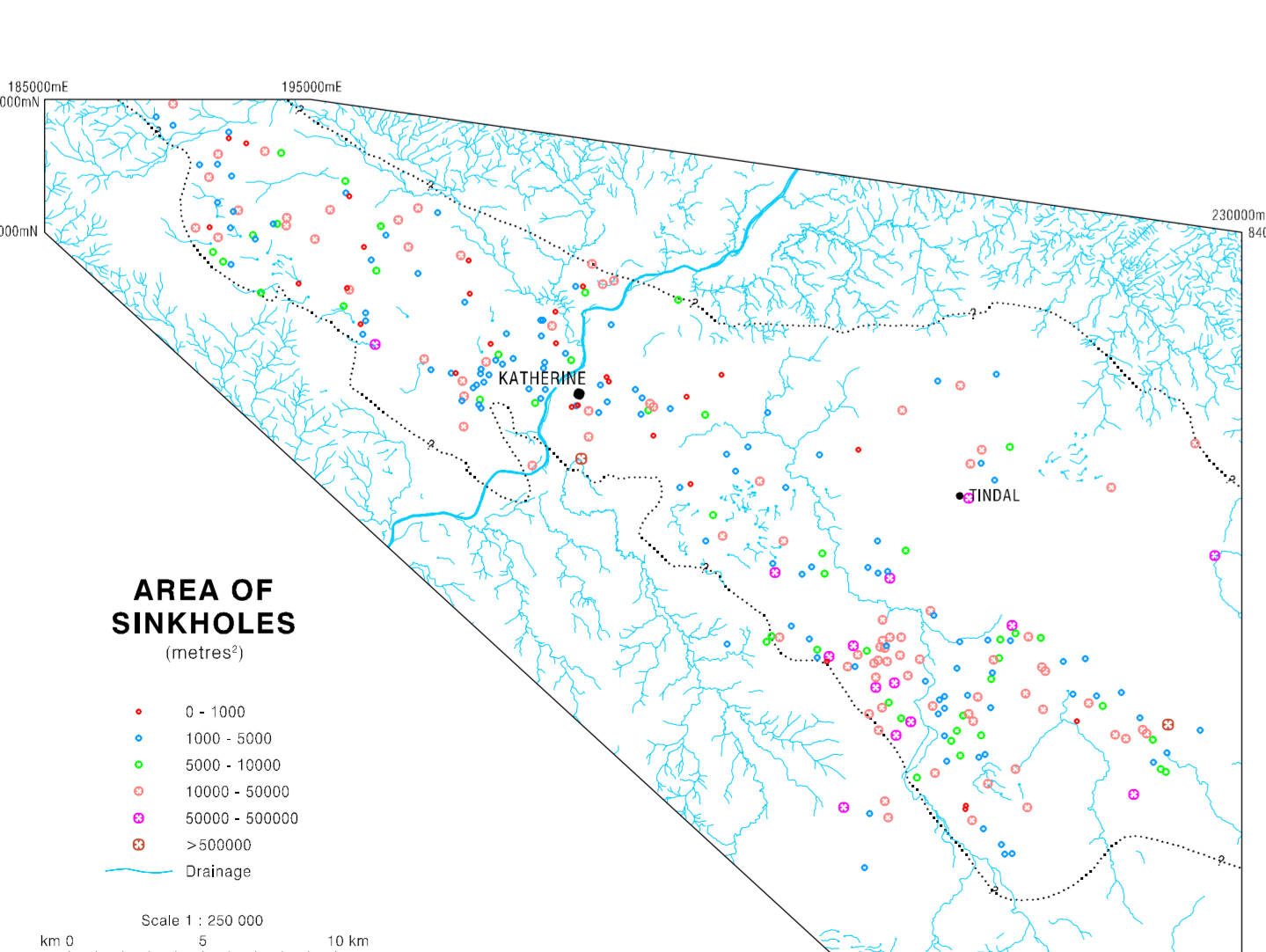
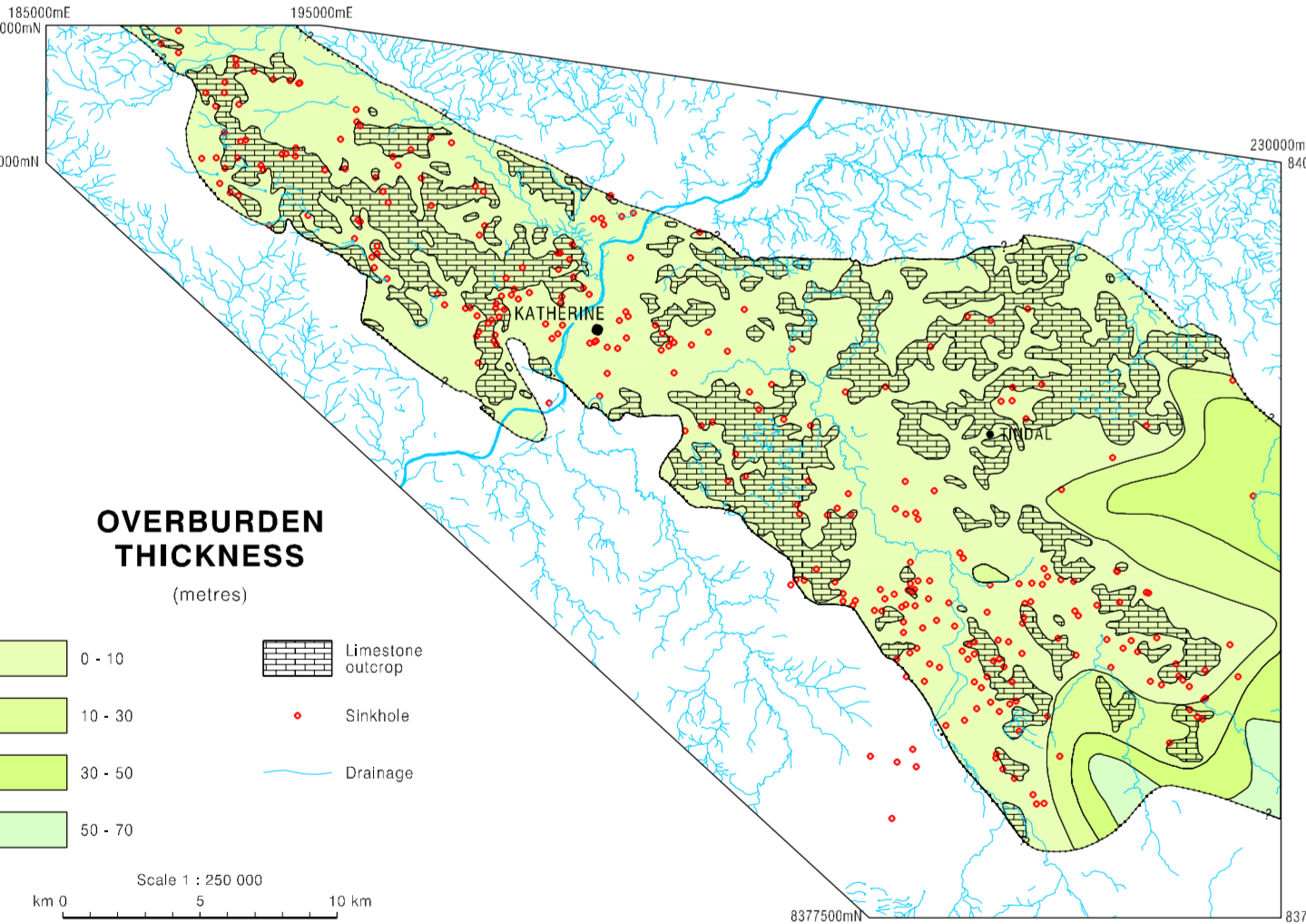
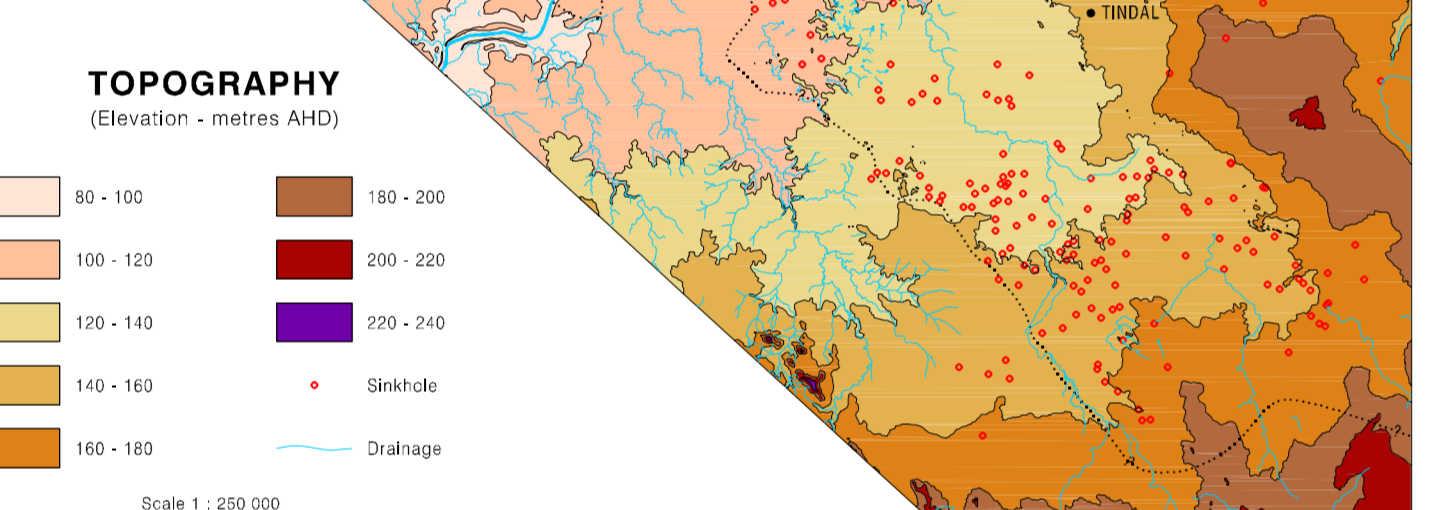
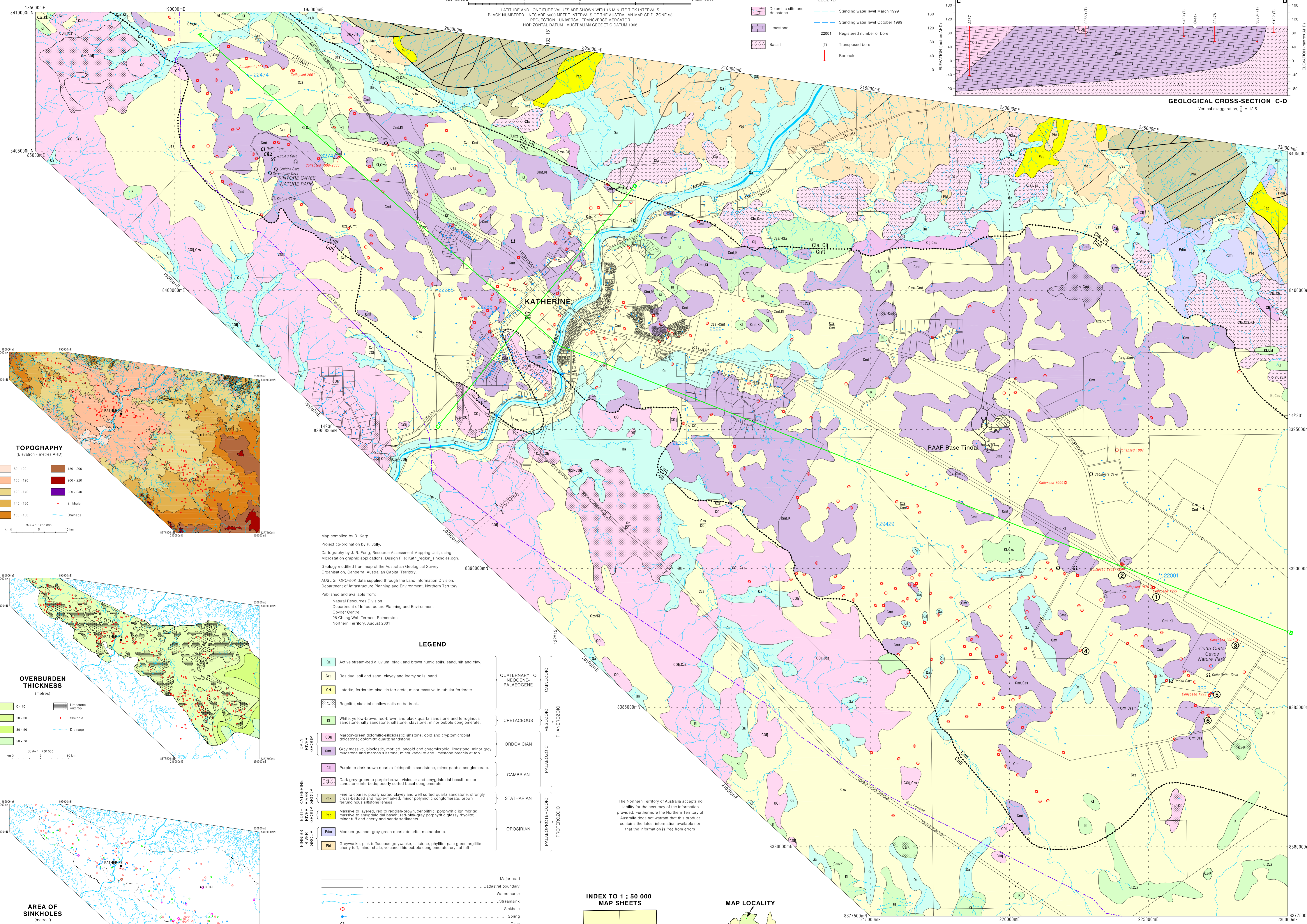
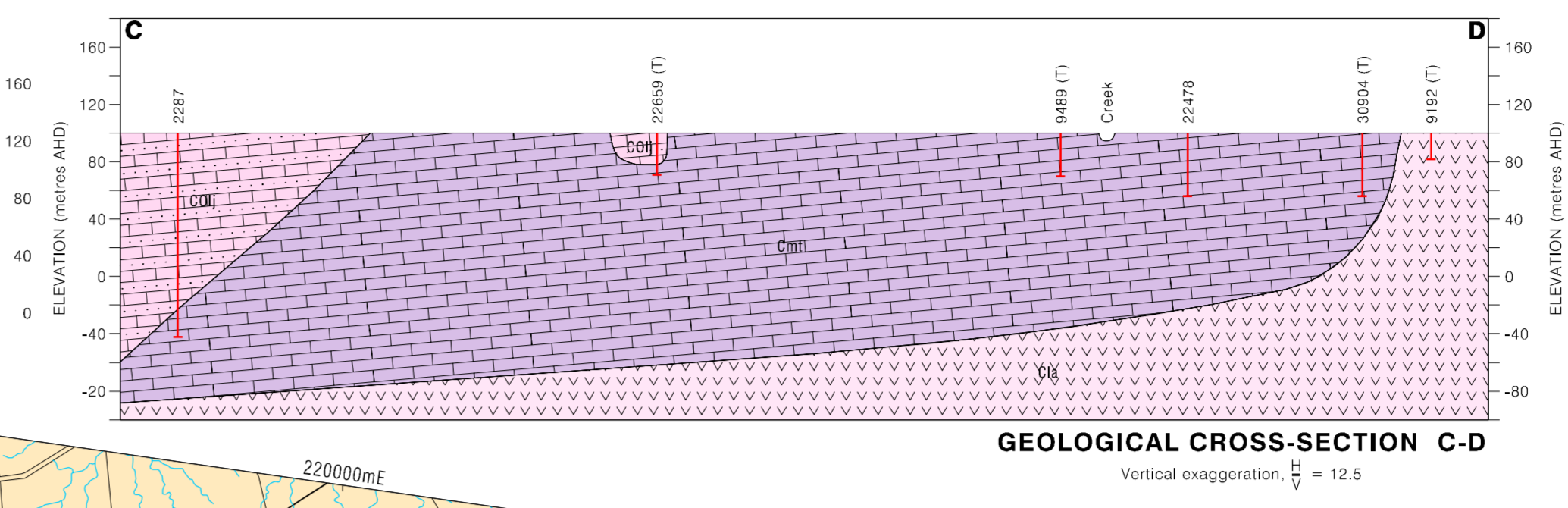
GEOLOGICAL CROSS-SECTION A-B

Vertical exaggeration: $\times 12.5$
 SCALE 1 : 50 000
 HORIZONTAL DATUM : AUSTRALIAN GEODETIC DATUM 1986



GEOLOGICAL CROSS-SECTION C-D

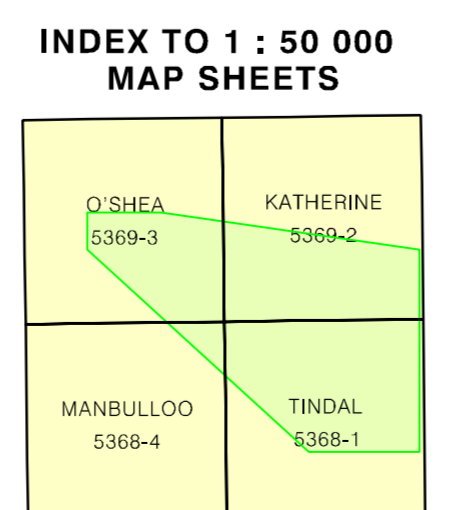
Vertical exaggeration: $\times 12.5$



Map compiled by D. Ward
 Project coordination by P. Jolly
 Cartography by J. R. Fong, Resource Assessment Mapping Unit
 Microstation graphic applications, Design File: Kath_region_sinksholes.dgn
 Geology modified from map of the Australian Geological Survey Organisation, Canberra, Australian Capital Territory.
 AUSLID TOPD-SINK data supplied through the Land Information Division, Department of Infrastructure Planning and Environment, Northern Territory.
 Published and available from:
 Natural Resources Division
 Department of Infrastructure Planning and Environment
 Goyder Centre
 29 Chung Wah Terrace, Palmerston
 Northern Territory, August 2001

LEGEND

Qa	Active stream-bed alluvium; black and brown humic soils; sand, silt and clay.	QUATERNARY TO NEOGENE-PALEOGENE
Qs	Residual soil and sand; clayey and loamy soils; sand.	CANADIAN
Qt	Lateite, ferricrete; pisolitic ferricrete; minor massive to tubular ferricrete.	
Qr	Regolith, skeletal shallow soils on bedrock.	MESOZOIC
Ki	White, yellow-brown, red-brown and black quartz sandstone and ferruginous sandstone; silty sandstone, siltstone, claystone; minor pebbly conglomerates.	
Or	Maroon-green dolomitic-illitic siltstone; ooid and cryptocrystalline dolomite; dolomitic quartz sandstone.	ORDOVICIAN
Om	Grey massive, tabular, nodular, oolitic and crystalline limestone; minor grey mudstone and maroon siltstone; minor vacuole and limestone breccia at top.	
Cl	Purple to dark brown quartz-feldspathic sandstone; minor pebbly conglomerate.	CAMBRIAN
Ca	Dark grey-green to purple-brown, vicular and amygdaloidal basalt; minor variolite breccia; poorly sorted basal conglomerate.	
Pk	Fine to coarse, poorly sorted clayey and well sorted quartz sandstone, strongly concretionary and nodular; minor calcareous conglomerate.	STATHARIAN
Pp	Massive to layered, red to redish-brown, xenolithic, porphyritic ignimbrite; massive to amygdaloidal basalt; red-pink-grey porphyritic glassy rhyolite; minor tuff and cherty and sandy sediments.	
Pm	Medium-grained, grey-green quartz dolomite, metadolomite.	OROSIRIAN
Pr	Greywacke, pink lufaceous greywacke, siltstone, phyllite, pale green argillite, cherty tuff; minor shale, volcanoclastic pebbly conglomerate, crystal tuff.	



The Northern Territory of Australia accepts no liability for the accuracy of the information provided. Furthermore the Northern Territory of Australia does not warrant that this product contains the latest information available nor that the information is free from errors.



Natural Heritage Trust
 Helping Communities Help Australia
 A Commonwealth Government Initiative

NATIONAL LANDCARE PROGRAM
 A program of the Natural Heritage Trust

Northern Territory Government
 Department of Infrastructure, Planning and Environment

SINKHOLES OF THE KATHERINE REGION