

MAJOR VEGETATION GROUPS of the PROPOSED CITY of WEDDELL

For further information contact: Manager, Land Science Branch, Natural Resources Division,
Department of Natural Resources, Environment, The Arts and Sport
Ph (08) 8999 3606, Fax (08) 8999 3666. Goyder Centre, Chung Wah Terrace, Palmerston, Northern Territory of Australia.

MAJOR VEGETATION GROUPS

Note:
Where multiple vegetation map units (VMU's) exist within one polygon (e.g. 14a/13), the VMU listed first is considered the dominant and additional VMU's sub-dominant by area within the polygon (e.g. 14a is dominant and 13 is sub-dominant). Please refer to the digital data for details on the proportional occurrence of VMU's within mosaic polygons.

CLOSED FOREST

- 31 Mixed species riparian mid open-forest dominated by *Melaleuca leucadendra* (Weeping Paperbark), *Syzygium armstrongii* (White Bush Apple), *Lophostemon lactifolius* (Red Swamp Mahogany) and *Pandanus spiralis* (Screw Palm)
- 7a MVF mid closed forest (Dry Monsoon Forest)
- 7b MVF tall closed forest (Spring Jungles)

- ### Mangrove closed forests
- Rhizophora stylosa* mid closed-forest (shoreline forest)
 - Rhizophora stylosa/Campostemon schultzei* low closed-forest/ open-forest (tidal creek forest)
 - Rhizophora stylosa/Bruguiera spp./Ceriops spp.* low closed-forest/ open-forest (transition zone)
 - Ceriops tagal* low closed-forest/open-forest
 - Mixed species low closed-forest (hinterland)

OPEN FOREST

- 17 *Melaleuca viridiflora* (Broad-leaved Paperbark) mid open forest with a mid open tussock grassland understorey
- 18b *Melaleuca cajuputi* (Cajuputi), *Lophostemon lactifolius* (Red Swamp Mahogany) mid open forest over a tussock grassland ground store

Mangrove open forests

- Avicennia marina* low open-forest

WOODLAND

- #### Eucalyptus dominated woodlands
- 2a *Eucalyptus miniata* (Darwin Woolly-butt) +/- *Eucalyptus tetradonta* mid woodland (Darwin Stringybark) over a mixed species mid tussock grassland
 - 2b *Eucalyptus miniata* (Darwin woolly-butt), *Erythrophloeum chlorostachys* (Ironwood) +/- *Corymbia confertiflora* (Cabbage Gum) mid woodland with a low open tussock grassland/shrubland understorey
 - 5a *Corymbia polysciada* (Apple Gum), *Erythrophloeum chlorostachys* (Ironwood), +/- *Corymbia foelschiana* (Fan-leaved bloodwood) mid woodland over a low sparse tussock grassland/low sparse shrubland ground store
 - 1a *Eucalyptus tetradonta* (Darwin Stringybark), *Eucalyptus miniata* (Darwin Woolly-butt) +/- *Erythrophloeum chlorostachys* (Ironwood) mid woodland with a mid open tussock grassland understorey
 - 3 *Corymbia foelschiana* (Broad-leaved Bloodwood) / *Erythrophloeum chlorostachys* (Ironwood) low woodland to open woodland with a low tussock grassland and/or low shrubland ground store
 - 11a *Corymbia polycarpa* (Long-fruited Bloodwood), *Erythrophloeum chlorostachys* (Ironwood), *Lophostemon lactifolius* (Red Swamp Mahogany) mid woodland with a mid open tussock grassland understorey
 - 15 *Eucalyptus alba* (Salmon Gum) mid woodland with a tall tussock grassland understorey
- #### Lophostemon dominated woodlands
- 12b *Lophostemon lactifolius* (Red Swamp Mahogany), *Erythrophloeum chlorostachys* (Ironwood) +/- *Corymbia spp.* mid woodland with a mid open tussock grassland understorey
 - 11b *Lophostemon lactifolius* (Red Swamp Mahogany) low woodland/ open woodland with a mid open tussock grassland understorey
- #### Melaleuca dominated woodlands
- 16a *Melaleuca viridiflora* (Broad-leaved Paperbark) low woodland with a mid open tussock grassland understorey
 - 16b *Melaleuca viridiflora* (Broad-leaved Paperbark), *Grevillea pteridifolia* (Fern-leaved Grevillea) low woodland/ open woodland with a mid open tussock grassland understorey
 - 18a *Melaleuca cajuputi* (Cajuputi) mid woodland with open tussock grassland understorey
 - 100 *Melaleuca viridiflora* (Broad-leaved Paperbark), *Lophostemon lactifolius* (Red Swamp Mahogany) mid woodland with a tall closed tussock grassland understorey

- #### Other open woodlands
- 20 *Xanthostemon paradoxus* (Bridal Tree) +/- *Corymbia foelschiana* (Fan-leaved Bloodwood) low open woodland with a mid tussock grassland ground store
 - 6a *Terminalia grandiflora* deciduous mid open woodland to woodland with a low sparse shrubland understorey
 - 14b *Grevillea pteridifolia* (Fern-leaved Grevillea) +/- *Acacia latescens* (Wattle) low open woodland with a mid sedgeland understorey
- #### SHRUBLANDS
- 19a Mixed species low open shrubland/tussock grassland
 - 19b Mixed species low shrubland with scattered emergents
- #### Samphire/Salt flat
- Salt-flats
- #### GRASSLANDS
- 8 *Eriachne burkittii* (Wanderer Grass) tussock grassland +/- emergent *Corymbia polycarpa* (Long-fruited bloodwood) and *Melaleuca sp.* over mid tussock grassland
 - 103 *Ischaemum australe* (Large Bluegrass) and *Imperata cylindrica* (Blady Grass) mid closed tussock grassland

OTHER COVER TYPES

- Disturbed. Insufficient detail available to allocate it to another MVG
- Cleared. All or most native vegetation removed
- Inland aquatic. Fresh and/or brackish water features

NOTES:

Vegetation information has been derived from aerial photograph interpretation and field collection of data. Mapping has been collected according to the national standards and prepared at a scale of 1:25 000.
Enlarging this map beyond this scale will not provide further detail.
A site inspection should always accompany mapping for specific areas.

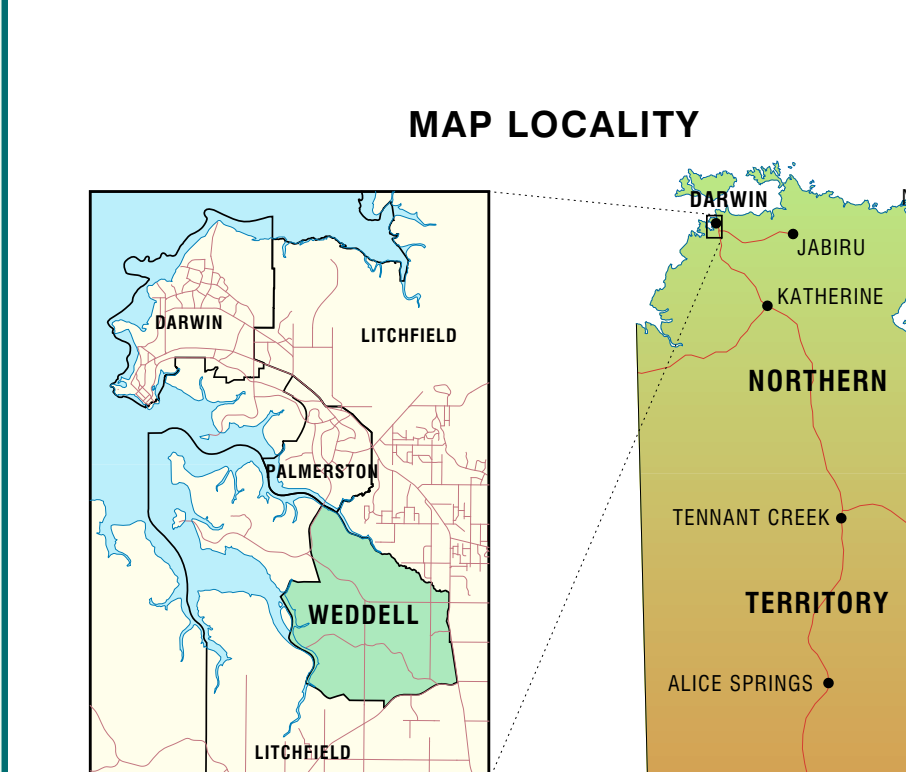
CARTOGRAPHY

L. Fritz, Spatial Data and Mapping, Natural Resources Division, Department of Natural Resources, Environment, The Arts and Sport Northern Territory of Australia, October 2011
File Reference: Weddell_Vegetation-Resources

GENERAL FEATURES

- Proposed City of Weddell boundary
- Vegetation group boundary
- Property boundary (October 2011)
- Local Government Area
- Locality
- Roadside Inn
- Park / Reserve
- Highway
- Main road
- Minor road: sealed
- Minor road: unsealed
- Railway
- Gas pipeline
- Drainage line

MAP LOCALITY



This map was produced on the Geocentric Datum of Australia 1994 (GDA 94)

WOODLAND continued

- #### Other woodlands
- 14a *Grevillea pteridifolia* (Fern-leaved Grevillea) +/- *Pandanus spiralis* (Screw-palm) +/- *Melaleuca nervosa* (Yellow-barked Paperbark) low woodland with a mid tussock grassland and/or mid sedgeland understorey
 - 12c Mixed species mid woodland with *Lophostemon lactifolius* (Red Swamp Mahogany) +/- *Erythrophloeum chlorostachys* (Ironwood) over open mid tussock grassland
 - 6b Mixed species deciduous woodland over a sparse low tussock grassland/ low sparse shrubland understorey
 - 102 *Acacia latescens* (Wattle) low woodland/ tall shrubland with a low sparse tussock grassland ground store
- #### Mangrove low woodlands
- Mixed species low woodland/samphire
 - Sonneratia alba* low woodland

OPEN WOODLAND

- #### Eucalyptus dominated open woodlands
- 5b *Corymbia polysciada* (Apple Gum) mid open woodland over a tussock grassland and/or a low sparse shrubland
 - 1b *Eucalyptus tetradonta* (Darwin Stringybark), *Erythrophloeum chlorostachys* (Ironwood) +/- *Corymbia spp.* (Bloodwood) mixed mid open woodland with a low open tussock grassland understorey
 - 9 *Corymbia polycarpa* (Long-fruited Bloodwood) mid open woodland with a low open tussock grassland understorey
 - 10 *Corymbia bella* (Ghost Gum) +/- *Corymbia polycarpa* (Long-fruited Bloodwood) mid open woodland, grassland
 - 4 *Eucalyptus tectica* (Darwin Grey-box) +/- *Erythrophloeum chlorostachys* (Ironwood) woodland/open woodland with a tall open tussock grassland understorey
- #### Lophostemon dominated open woodlands
- 12a *Lophostemon lactifolius* (Red Swamp Mahogany) +/- *Corymbia polycarpa* (Long-fruited Bloodwood) mid open woodland with an open tussock grassland understorey
- #### Melaleuca dominated open woodlands
- 13 *Melaleuca nervosa* (Yellow-barked Paperbark) low open woodland with mid open shrubland understorey

- #### Other open woodlands
- 20 *Xanthostemon paradoxus* (Bridal Tree) +/- *Corymbia foelschiana* (Fan-leaved Bloodwood) low open woodland with a mid tussock grassland ground store
 - 6a *Terminalia grandiflora* deciduous mid open woodland to woodland with a low sparse shrubland understorey
 - 14b *Grevillea pteridifolia* (Fern-leaved Grevillea) +/- *Acacia latescens* (Wattle) low open woodland with a mid sedgeland understorey

SHRUBLANDS

- 19a Mixed species low open shrubland/tussock grassland
- 19b Mixed species low shrubland with scattered emergents

Samphire/Salt flat

- Salt-flats

GRASSLANDS

- 8 *Eriachne burkittii* (Wanderer Grass) tussock grassland +/- emergent *Corymbia polycarpa* (Long-fruited bloodwood) and *Melaleuca sp.* over mid tussock grassland
- 103 *Ischaemum australe* (Large Bluegrass) and *Imperata cylindrica* (Blady Grass) mid closed tussock grassland

OTHER COVER TYPES

- Disturbed. Insufficient detail available to allocate it to another MVG
- Cleared. All or most native vegetation removed
- Inland aquatic. Fresh and/or brackish water features

BIBLIOGRAPHIC REFERENCE:

Cuff, N. and Brocklehurst, P. *Vegetation Mapping and Floristic Survey of the Proposed New Township of Weddell, Northern Territory*. Technical Report No. 07/2011D. Land Resources Branch, Natural Resources Division, Department of Natural Resources, Environment, The Arts and Sport. Northern Territory, 2011.

TECHNICAL REFERENCES:

Brocklehurst, P., Lewis, D., Nagier, D., Lynch, D. (2007) *Northern Territory Guidelines and Field Methodology for Vegetation Survey and Mapping*. Technical Report No. 02/2007D. Department of Natural Resources, Environment and the Arts, Palmerston, Northern Territory.

ESCAVI-Executive Steering Committee for Australian Vegetation Information (2003). *Australian Vegetation Attribute Manual: National Vegetation Information System*. Version 6.0. Department of Environment and Heritage

National Committee on Soil and Terrain (2009). *Australian Soil and Land Survey Field Handbook*. 3rd Edition. CSIRO Publishing, Melbourne.

Walker, J. and Hopkins, M. S. (1990) "Vegetation". In McDonald, R. C., Isbell, R. F., Speight, J. G., Walker, J. and Hopkins, M. S. *Australian Soil and Land Survey Field Handbook*. Second Edition (Yellow Book). Inkata Press, Melbourne.

Black numbered lines are 2500 metre intervals of the Map Grid of Australia (MGA) Zone 52. Transverse Mercator Projection Horizontal Datum: Geocentric Datum of Australia 1994 (GDA94)

© Northern Territory of Australia

This product and all material forming part of it is copyright belonging to the Northern Territory of Australia. You may use this material for your personal, non-commercial use or use it within your organisation for non-commercial purposes, provided that an appropriate acknowledgement is made and the material is not stored in any way. Subject to the fair dealing provisions of the Copyright Act 1968, you must not make any other use of this product (including copying or reproducing it or part of it in any way) unless you have the written permission of the Northern Territory of Australia to do so.

The Northern Territory of Australia does not warrant that the product or any part of it is correct or complete and will not be liable for any loss, damage or injury suffered by any person as a result of its inaccuracy or incompleteness.

