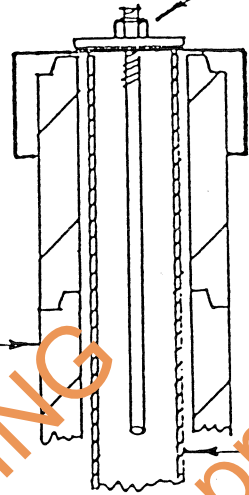


TERRAIN CAT.	MULLION SIZE
2	C4 x 64 x 4.9 SHS
2 1/2	C4 x 64 x 4.0 SHS

R12 FULL HEIGHT HOLDING DOWN BOLTS AT 1000 CRS. MAXIMUM (INSIDE 64 SHS. MULLIONS)
 90 SQUARE x 8 PLATE WASHER (SNUG TIGHT)

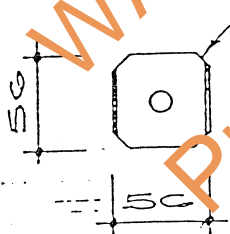


LYSAGHT C1510 TRANSFER BEAM FULL PERIMETER OF BUILDING

125 WIDE INTERBLOCK WALL

64 SHS. MULLIONS INSIDE INTERBLOCK CORE AT 1000 CRS MAXIMUM. (EXTERNAL AND SHEAR WALLS ONLY). (REFER TABLE ABOVE)

BOND BEAM ANCHORAGE



3mm ϕ WASHER

R12 H.D. BOLT - 1000 CRS MAX.

64 SHS. MULLIONS. 1000 CRS. MAX.

125 WIDE INTERBLOCK WALL

R12 COUPLER TO FULL HEIGHT ROD AND M12 HILTI HVA CHEMICAL ANCHOR OR EQUIVALENT

3mm PLATE WASHER WITH 15 mm UPTURNS TO FIT SNUG IN 64 S.H.S MULLION

LYSAGHT Z15012

POLYTHENE FLASHING

CONCRETE SLAB EDGE

WALL TO SLAB EDGE CONNECTION

INTERBLOCK AUSTRALIA

1686 MCKINNON ROAD
 BERRIMAH DARWIN NT.

INTERLOCK WALL SYSTEM FOR SINGLE STOREY RESIDENTIAL APPLICATIONS. STRUCTURAL CERTIFICATION OF SYSTEM ONLY

Sleeman Dunkley Treacy Maunsell Pty Ltd
 CONSULTING ENGINEERS & PROJECT MANAGERS

DESIGN DATA SHEET

DEPT. OF LANDS AND HOUSING

APPROVA *[Signature]*

DATE 11.7.99

W13/2

CERTIFIED:

[Signature]