

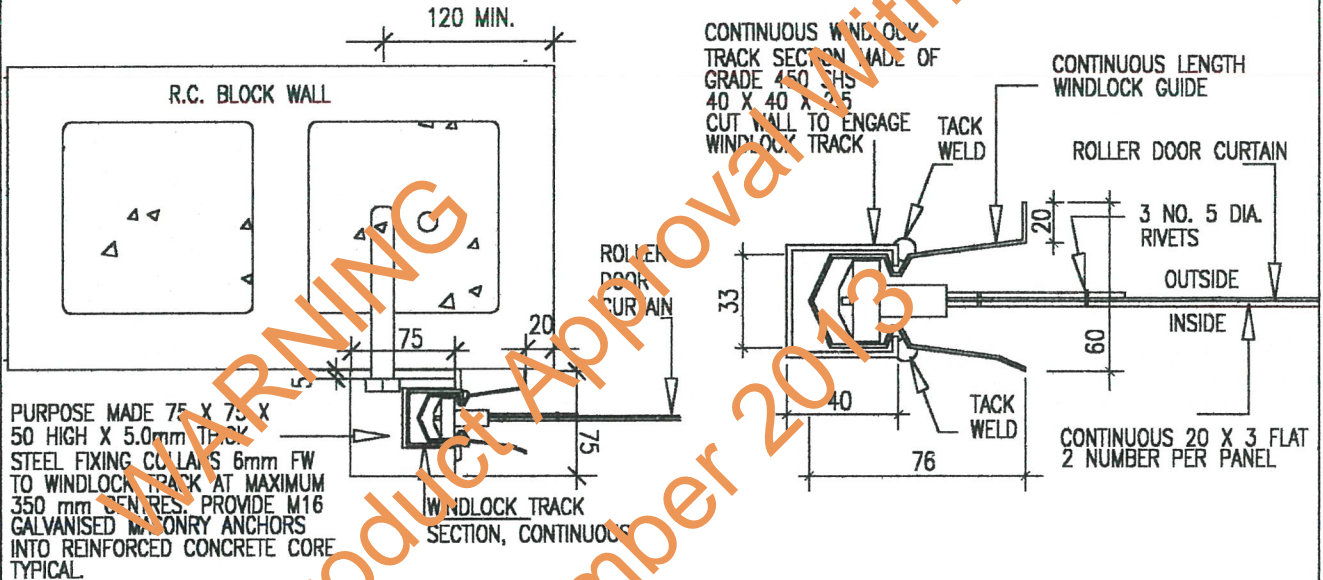
STEEL-LINE WINDLOCK SYSTEM AS MODIFIED BY TERRITORY ROLLER DOORS

TRACK SECTION FIXING

TACK WELD TRACK SECTION TO WINDLOCK GUIDE AT MAXIMUM 350 CENTRES, LOCATE WELD MID POINT BETWEEN PURPOSE MADE STEEL COLLARS AND DOOR CLADDING

DOOR CLADDING

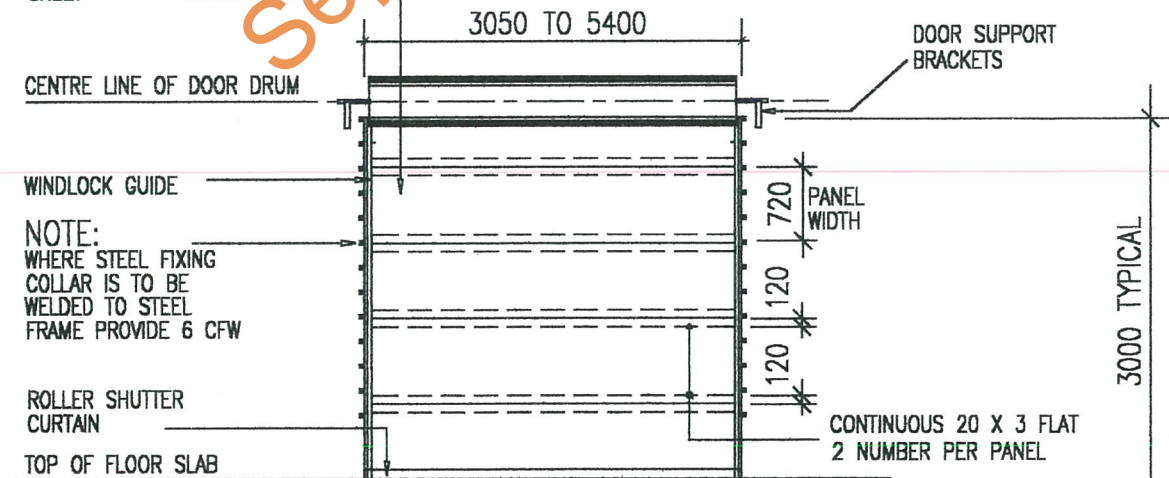
ROLLER DOOR CLADDING IS MANUFACTURED FROM ZINCALUME SHEET 0.4mm BASE METAL THICKNESS



WINDLOCK PLAN (R.C. BLOCK WALL)

PLAN WINDLOCK SYSTEM JAMB DETAIL

WINDLOCK SYSTEM REFER DETAIL THIS SHEET



DOOR ELEVATION FROM INSIDE

STEELINE WINDLOCK SYSTEM
AS MODIFIED BY
TERRITORY ROLLER DOORS

FIXING OF STEELINE METAL
ROLLER DOORS
FOR CLASS 1,2 AND 10 BUILDING(DOMESTIC)

DESIGN DATA SHEET

M. Kelly 31.3.03
CERTIFIED DESIGN ENGINEER: DATE

Maurice Kelly & Associates
Consulting Structural Engineers
19 Hibernia Crescent
Brinkin N.T. 0810
Telephone (08) 8927 6818
Facsimile (08) 8945 2093

DARWIN AND NORTHERN
TERRITORY CYCLONE AREA
APPROVED: *[Signature]* DATE: 31.3.03

DRAWING NUMBER
M/ 414 / 1 /