

B&D PANELIFT® DOOR 2.5 to 3.1 m Wide
for Northern Territory Cyclonic Areas

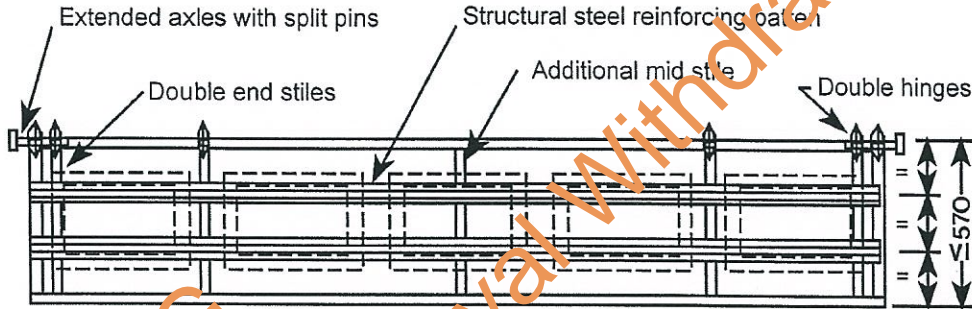


Figure 1 Typical door panel

PANELIFT® DOOR CONFIGURATION:

A Panelift® door consists of 4 to 6 panels each up to 570 mm high as shown in Figure 1.

Each panel must have the following configuration:

- two Strandit TH 64120 G550 grade, 1.2 mm thick top hat section reinforcing battens, fastened with two 14 gauge x 20 mm screws to each stile.
- double end stiles and double end hinges as illustrated in Figure 1.
- additional mid stile.
- extended axles with split pins as shown in Figure 2.
- stiffened track brackets consisting of a pair of standard 2.4 mm thick L brackets, 105 x 35 x 73 mm long, tack welded together as shown in Figure 2.
- track bracket fixing to jamb sufficient to resist loads per metre height of door as shown in Figure 2.

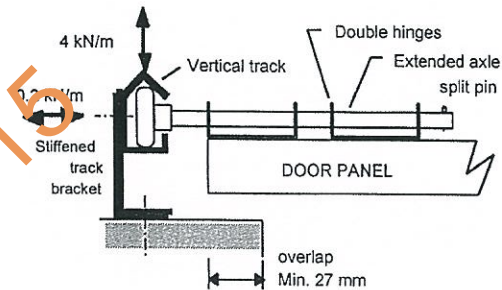


Figure 2 Plan of end support

DESIGN NOTES

The 3.1 m wide Panelift® doors satisfied the cyclic test criteria specified in TR 440 for both net outwards pressures and net inwards pressures, based on the criteria listed in Table 1 for Region C, terrain category 2.5.

Table 1 Design wind pressures (AS1170.2-1989)

| Net pressure | Cpe | Cpi | K _L | PSD design pressures (kPa) |
|--------------|------|------|----------------|----------------------------|
| Outwards | 0.65 | 0.7 | 1.5 | 2.36 |
| Inwards | 0.7 | 0.65 | 1.0 | 1.90 |

| | | |
|--|--|-------------------|
| B&D Australia (A Division of Evans Deakin Pty Ltd) ACN 000 002 031 34-36 Marigold St Revesby NSW 2212 Ph: 02 9722 5555 Fax: 02 9772 3830 | B&D PANELIFT® DOOR For openings 2.5 m to 3.1 m wide | |
| | DESIGN DATA SHEET | |
| Cyclone Structural Testing Station School of Engineering, James Cook University, Townsville, Qld 4811 | Northern Territory Dept of Lands & Housing Building Authority Branch | Dwg No M/413/2 |
| Certified: <i>[Signature]</i> M.I.E.Aust. C. P. Eng Date: 21-3-01 | Approved: <i>[Signature]</i> Date: 11-4-01 | |

New Expiry: 31/11/01
Signature: *[Signature]*

New Expiry Date: 31/11/01
Signature: *[Signature]*