



Roll-A-Door™

**SERIES 2 ROLL-A-DOOR
FOR CYCLONIC AREAS**

**SERIES 2 DOORS WITH REGULAR GUIDES AND CLIPS EVERY SECOND FLAT
BLOW-IN / BLOW-OUT SITUATIONS (MAX. SAFE WIND LOAD PRESSURE SHOWN IN kPa)**

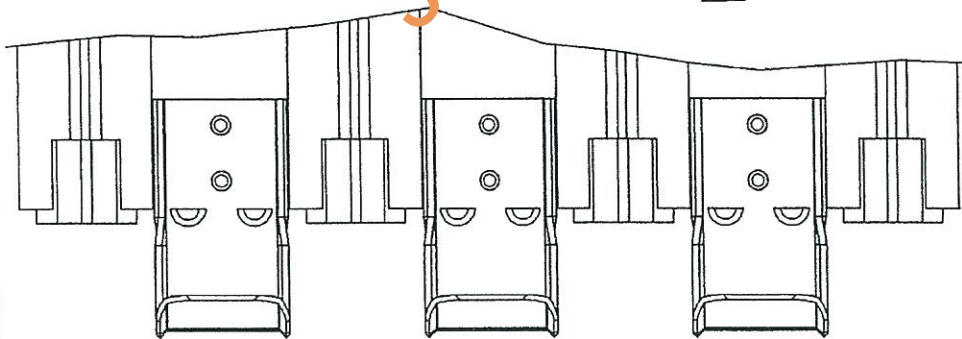
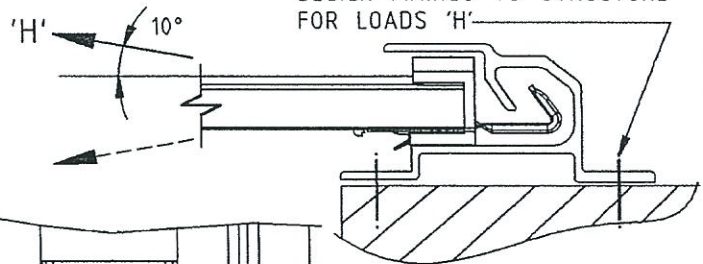
HEIGHT (mm)	DOOR WIDTH (mm)										
	1200	1600	2000	2400	2800	3200	3600	4000	4400	4800	5100
UPTO 5000	4.0+	4.0+	4.0+	4.0+	4.0+	3.6	3.2	2.7	2.45	2.23	2.1

**SERIES 2 DOORS WITH REGULAR GUIDES AND CLIPS EVERY FLAT
BLOW-IN / BLOW-OUT SITUATIONS (MAX. SAFE WIND LOAD PRESSURES SHOWN IN kPa)**

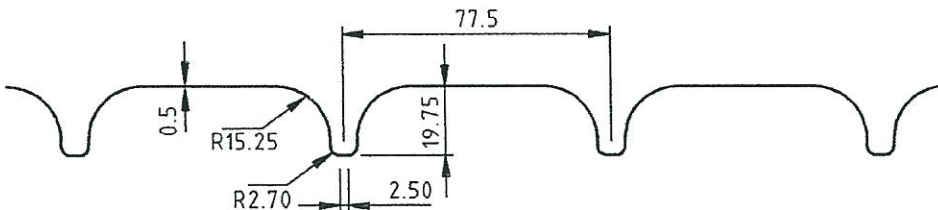
HEIGHT (mm)	DOOR WIDTH (mm)										
	1200	1600	2000	2400	2800	3200	3600	4000	4400	4800	5100
UPTO 5000	4.0+	4.0+	4.0	4.0+	4.0+	4.0+	3.8	3.6	3.5	3.4	3.3

ABUTMENT LOAD 'H' PER METRE OF DOOR HEIGHT KN	WIND LOAD PRESSURE (kPa)							
	0.5	1.0	1.5	2.0	2.5	3.0	3.5	4.0
	6.0	13.2	14.8	26.4	33.0	39.6	46.2	52.8

STRUCTURAL ENGINEER TO
DESIGN FIXINGS TO STRUCTURE
FOR LOADS 'H'



PLAN VIEW-SERIES 2
WIND-LOCK SYSTEM



CURTAIN MATERIAL: COLORBOND
ZALG300S2
0.5mm THICK

B & D AUSTRALIA
(A DIVISION OF CLYDE INDUSTRIES LIMITED)
34 MARIGOLD STREET, REVESBY NSW 2212
PH (02) 771 5566 FAX (02) 792 1380

SERIES 2 HIGHWIND CLIP /
CURTAIN ASSEMBLY FOR
ROLL-A-DOOR

New Expiry Date 3/1/95
Signature [Signature]



**Irwin Johnston & Partners
(N.T.) Engineers Pty. Ltd.
CONSULTING ENGINEERS**
Tel. (089) 819011
Fax. (089) 814010

CERTIFIED [Signature]
DATE JUNE '95
JOB No. 6237

DESIGN DATA SHEET

NORTHERN TERRITORY CYCLONIC AREAS SHEET No
APPROVED [Signature] DATE 21-7-95 M40615

New Expiry. 3/1/95
Signature. [Signature]