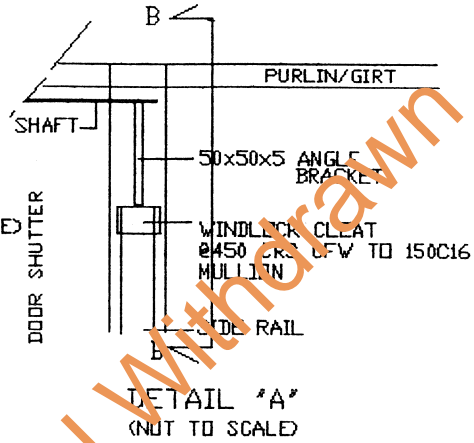
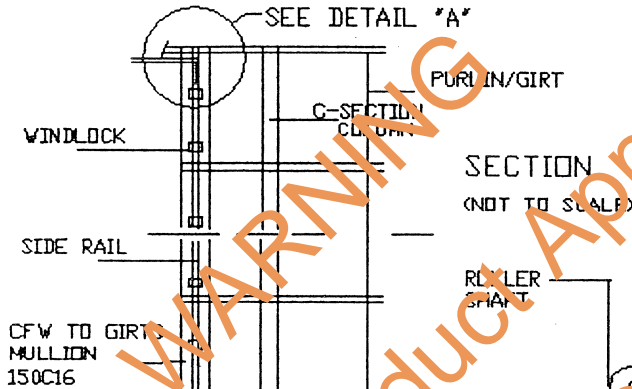


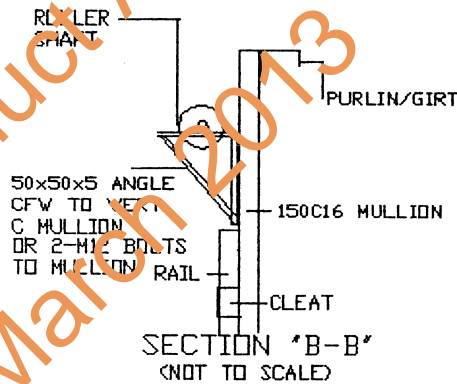
PLAN
(NOT TO SCALE)



DETAIL "A"
(NOT TO SCALE)



SECTION
(NOT TO SCALE)



SECTION "B-B"
(NOT TO SCALE)

NOTE 1
FOR USE OF CLASS
1,2,&10 BUILDING ONLY
& NOT EXCEEDING 3M WIDE

MAX. OPENING SIZE	TESTED PRESSURE KPa	No. WINDLOCK PER TRACK
2500 MM	1.8 KPa	6
3000 MM	1.8 KPa	8

STEEL-LINE WINLOCK BY CREEKS

THE ROLLER DOORS DISPLAYED ON THIS DATA SHEET HAVE BEEN SUCCESSFULLY TESTED TO WITHSTAND A WIND PRESSURE OF 1.8 KPa. TESTING PROCEDURE WAS WITNESSED AND APPROVED BY TECHISEARCH LTD. ON THE 11TH DEC. 1992. A REPORT WAS ALSO PRODUCED TO VERIFY THE RESULTS. THE ROLLER DOORS ARE MANUFACTURED FROM Z/L BASE COLOUR STEEL SHEETING, BASE METAL THICKNESS 0.40MM, TOTAL COATED THICKNESS 0.47MM. THE ROLLER DOOR SYSTEM CAN BE EITHER HAND OR ELECTRICALLY DRIVEN.

CERTIFIED *[Signature]*
DATE: 1/12/93
ENGINEER: JAA

FIXING OF STEELINE METAL ROLLER DOORS (BY CREEKS)

DESIGN DATA SHEET

CREEKS METAL INDUSTRIES PTY. LTD.
491 MOUNTAIN HWY. BAYSWATER 3153

NORTHERN TERRITORY
CYCLONIC AREAS

DTC M405/2

APPD. *[Signature]*

DATE: 27/1/93