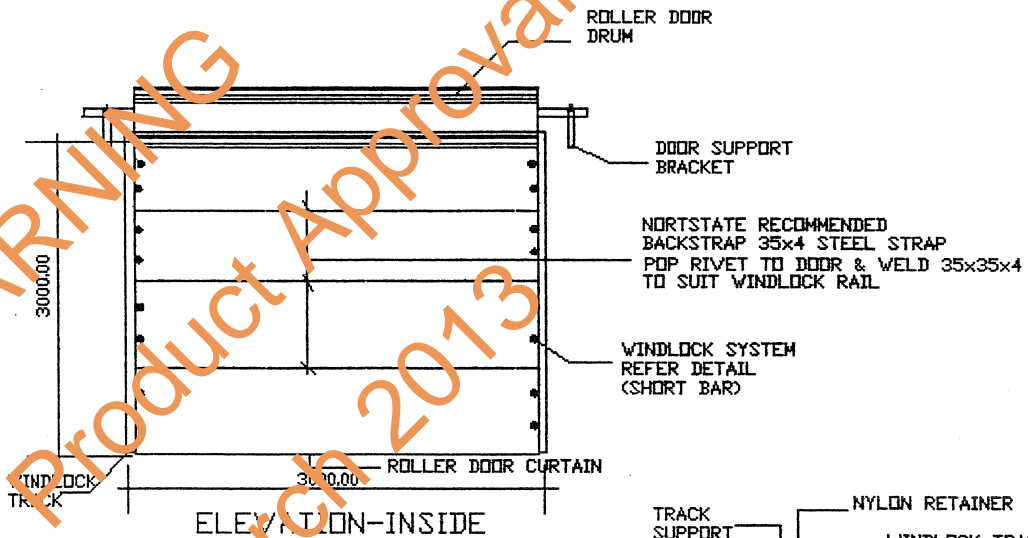


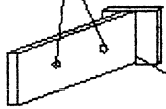
STEEL-LINE WINLOCK BY CREEKS

THE ROLLER DOORS DISPLAYED ON THIS DATA SHEET HAVE BEEN SUCCESSFULLY TESTED TO WITHSTAND A WIND PRESSURE OF 1.8 KPa. TESTING PROCEDURE WAS WITNESSED AND APPROVED BY TECHISEARCH LTD. ON THE 11TH DEC. 1992. A REPORT WAS ALSO PRODUCED TO VERIFY THE RESULTS. THE ROLLER DOORS ARE MANUFACTURED FROM Z/L BASE COLOUR STEEL SHEETING. BASE METAL THICKNESS 0.40MM, TOTAL COATED THICKNESS 0.47MM. THE ROLLER DOOR SYSTEM CAN BE EITHER HAND OR ELECTRICALLY DRIVEN.

WARNING
Product Approval Withdrawn
March 2013

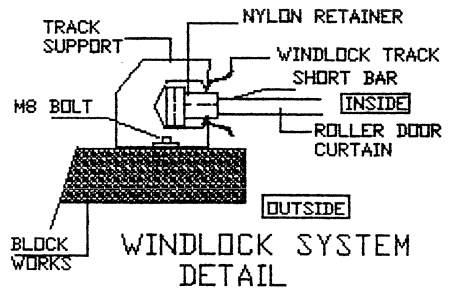


#4 POP RIVETS @ 500 CRS.



4MM CFW BOTH SIDES

STRAP END DETAIL TO TRACK/RAIL



NOTE 1
FOR USE OF CLASS 1,2,&10 BUILDING ONLY & NOT EXCEEDING 3M WIDE

MAX. OPENING SIZE	TESTED PRESSURE KPa	No. WINDLOCKS PER TRACK
2500MM	1.8KPa	6
3000MM	1.8KPa	8

CERTIFIED : *[Signature]*
DATE : 12/1/93
ENGINEER : JAA

FIXING OF STEELINE METAL ROLLER DOORS (BY CREEKS)

DESIGN DATA SHEET

CREEKS METAL INDUSTRIES PTY. LTD.
491 MOUNTAIN HWY. BAYSWATER 3153

NORTHERN TERRITORY CYCLONIC AREAS

DTC #405/1

APPD. *[Signature]*

DATE : 27/1/93