

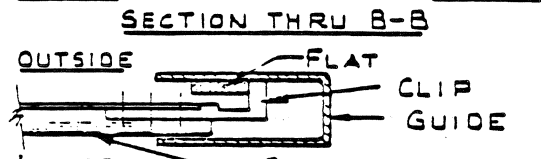
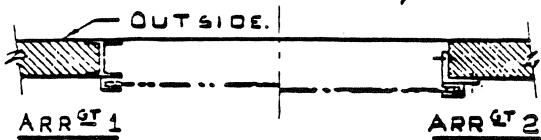
TREVOR ROLLER SHUTTER DOORS FOR CYCLONE-PRONE AREAS

GALVABOND STEEL SHUTTERS ARE AVAILABLE IN T75/1.0 (NOM. 75mm SLAT 1.0mm THICK) OR T75/1.4 (NOM. 75mm SLAT 1.4mm THICK) WITH PERMISSIBLE MAX. CLEAR OPENINGS FOR SINGLE SPAN SHUTTERS AS SHOWN IN TABLE 1. REQUIRED CLEARANCES FOR PARTICULAR OPENINGS ARE GIVEN IN TABLE 2.

TABLE 1.

CYCLONIC CATEGORY.	REQUIRED "STRENGTH" PRESSURE KPa	PERMISSIBLE CLEAR OPENING METRES.
1	4.5	5.25
2	3.6	6.15
2.5	2.7	7.50
3	1.8	9.90

WINDLOCK CLIPS ARE FITTED TO BOTH ENDS OF ALTERNATE SLATS LOCKING ON FLAT BARS WELDED TO INSIDE OF 100MM DEEP GUIDES. EDGES OF INTENDED OPENINGS MUST BE DESIGNED SUFFICIENTLY STRONG TO SUPPORT WINDLOADS TRANSMITTED BY THE SHUTTER. SHUTTER GUIDES REQUIRE TO BE WELDED TO THE OPENING EDGES AND PROVISION FOR THIS WELDING SHOULD BE MADE. THE OPENING EDGE SHOULD BE EITHER AN INSET STEEL MEMBER - ARRANGEMENT 1 OR SOME ALTERNATIVE PROVISION FOR WELDING. (ARRANGEMENT 2 SHOWS A SUGGESTED METHOD USING M.S. ANGLE BOLTED TO WALL TO FORM OPENING EDGE.)

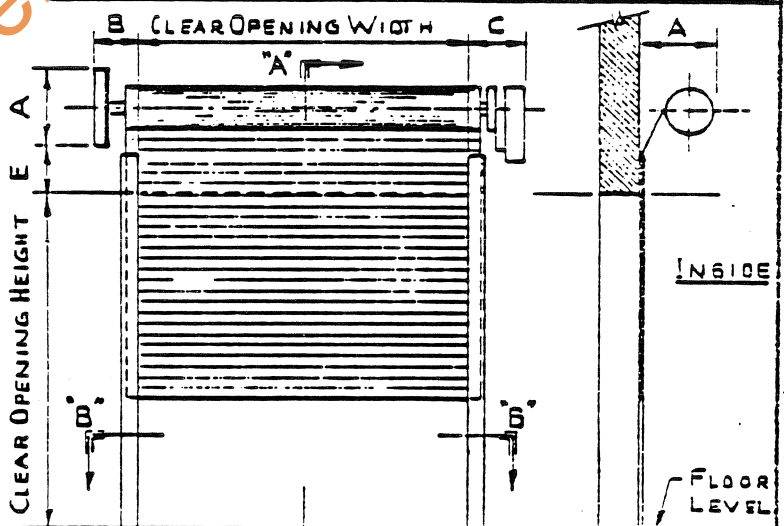


CURTAIN WINDLOCK CLIP & GUIDE
SEE D^{NO} A2-04528 FOR DETAIL.

TABLE 2.

SPRING BALANCED (PUSH UP TYPE-NO GEARS) RECOMMENDED MAX. OPENING - 6.50 METRES.							
A	B	C	E				
300	200	200	150				
SINGLE GEAR-CHAIN OPERATED RECOMMENDED MAX. OPENING 10.50 METRES.							
A	B	C	E				
300	200	225	200				
MULTIPLE GEAR OPERATION. HEIGHT							
WIDTH	3000 5000		UPTO 5000		UPTO 6000		
3000 - 5000	A	B	C	E			
	356	230	290	200			
5000 - 6000				A	B	C	E
				400	230	290	250
TRIPLE GEAR OPERATION HEIGHT							
WIDTH	6000 - 9000						
6000	A	B	C	E			
9000	460	250	350	300			

NOTE: ALL SHUTTERS AVAILABLE WITH POWER OPERATION - ADD 300mm TO DIMENSION 'C' WHEN POWERED.



ELEVATION FROM INSIDE

SECTION THRU "A-A"

MANUF'S NAME: **TREVOR BOILER & ENG. CO.**
A DIVISION OF BABCOCK & WILCOX AUST. LTD.
ADDRESS: **STEEL ST NTH MELB. VICTORIA 3051 AUST.**
PHONE: **03-329-7977.**

FIXING OF TREVOR ROLLER SHUTTERS
PERFORMANCE DATA FOR WINDLOADS.
IN THE DARWIN AREA.

DESIGN DATA SHEET

CERTIFIED Paul M. Jenkins
DATE 12.4.79

NORTHERN TERRITORY DRAWING N^o **CYCLONIC AREAS**
APP'D. [Signature] DATE: 24.79 M/ 402 / 1