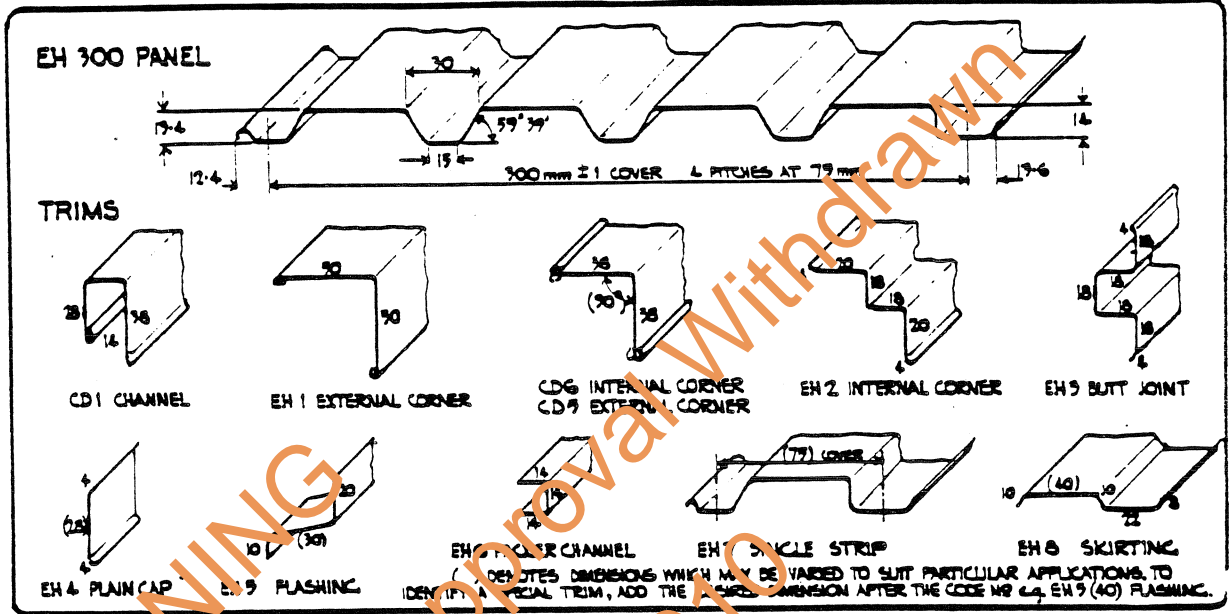
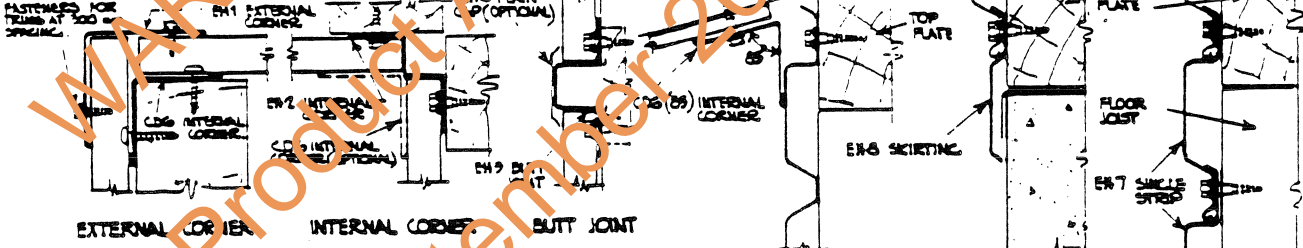


# LYSACHT EH 300 EASYCLAD APPLICATION DATA.

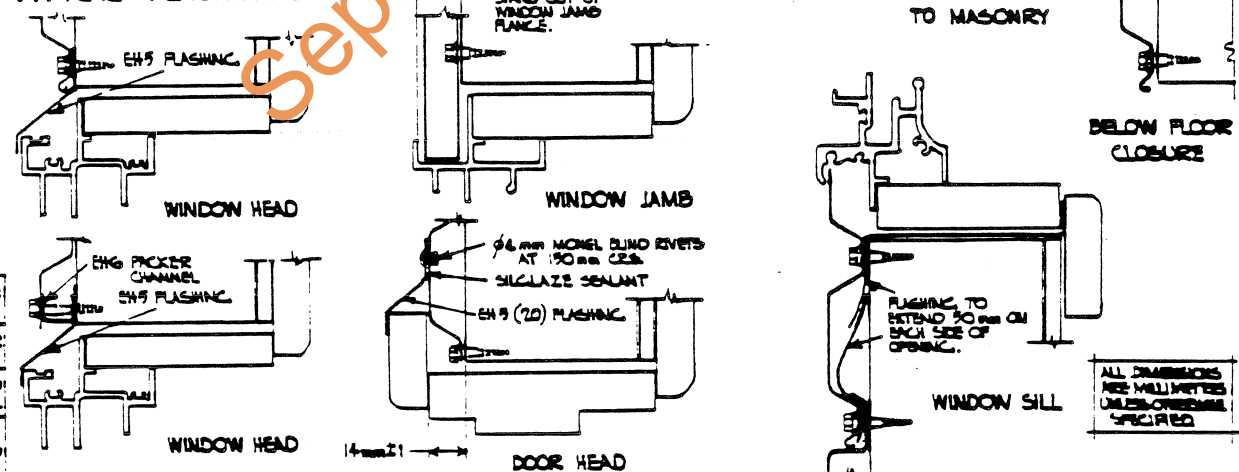
MATERIAL SPEC FOR EH 300 AND TRIMS : 0.77 mm BASE THICKNESS STEEL TO AS1397-G300  
 COLORBOND OR OTHER FINISHES SUPPLIED AS REQUIRED.



## TYPICAL CLOSURES



## TYPICAL FLASHINGS



Special Steel Building Products Under Australian Conditions  
 If it is intended to use uncoated, zincalume, prime coated or color bond  
 building products with the LYSACHT system, please contact your local office  
 for the correct specification and details of the LYSACHT system or contact  
 your nearest LYSACHT office.  
 Temporary products will perform as specified only if fixed in accordance with  
 the recommendations contained in this data sheet.

MANUF'S NAME <b>JOHN LYSACHT (AUST) LTD</b>	FIXING OF... <b>LYSACHT EH 300 EASYCLAD</b> .....	
ADDRESS <b>CHR. COONAWARRA AND BOMBING ROADS,</b>	APPLICATION DATA.	
<b>WINNELLIE, N.T. 5789</b> PHONE NO. <b>843311</b>	IN THE DARWIN AREA.	
<b>DESIGN DATA SHEET</b>		
CERTIFIED <i>A. Best</i> M.I.E. Aust.	NORTHERN TERRITORY - CYCLONIC AREAS	DRAWING NO. <b>M/204/3</b>
DATE... <i>22/10/76</i>	APP'D <i>M. Kelly</i> DATE <i>13/6/78</i>	